

BP224 Series



Certification :

**ISO9001-2015**



## Content

---

1.Introduction	_____
2.Application	_____
3.Product Features	_____
4.Technical data	_____
5.Dimensions	_____
6.Lock type	_____
7.Ordering Guide	_____
8.Installation and Removal	_____
9.Transport and Storage	_____

## 1. Introduction

Rupture Disk (means burst plug) BP224 series are made by 17-4PH in use of pressure releasing for emergency circumstances. The diaphragm will burst while pressure overloaded to protect the machine and operator from explosion damage

## 2. Application

Fiber machine,Rubber -plastic machine,Polymer machine etc

## 3. Product Features

- Burst pressure range: 0…2500psi to 0…15000psi
- Low installation and maintenance costs
- Reliable protection of personnel and machinery
- Robust sensing element
- Designed for extrusion applications

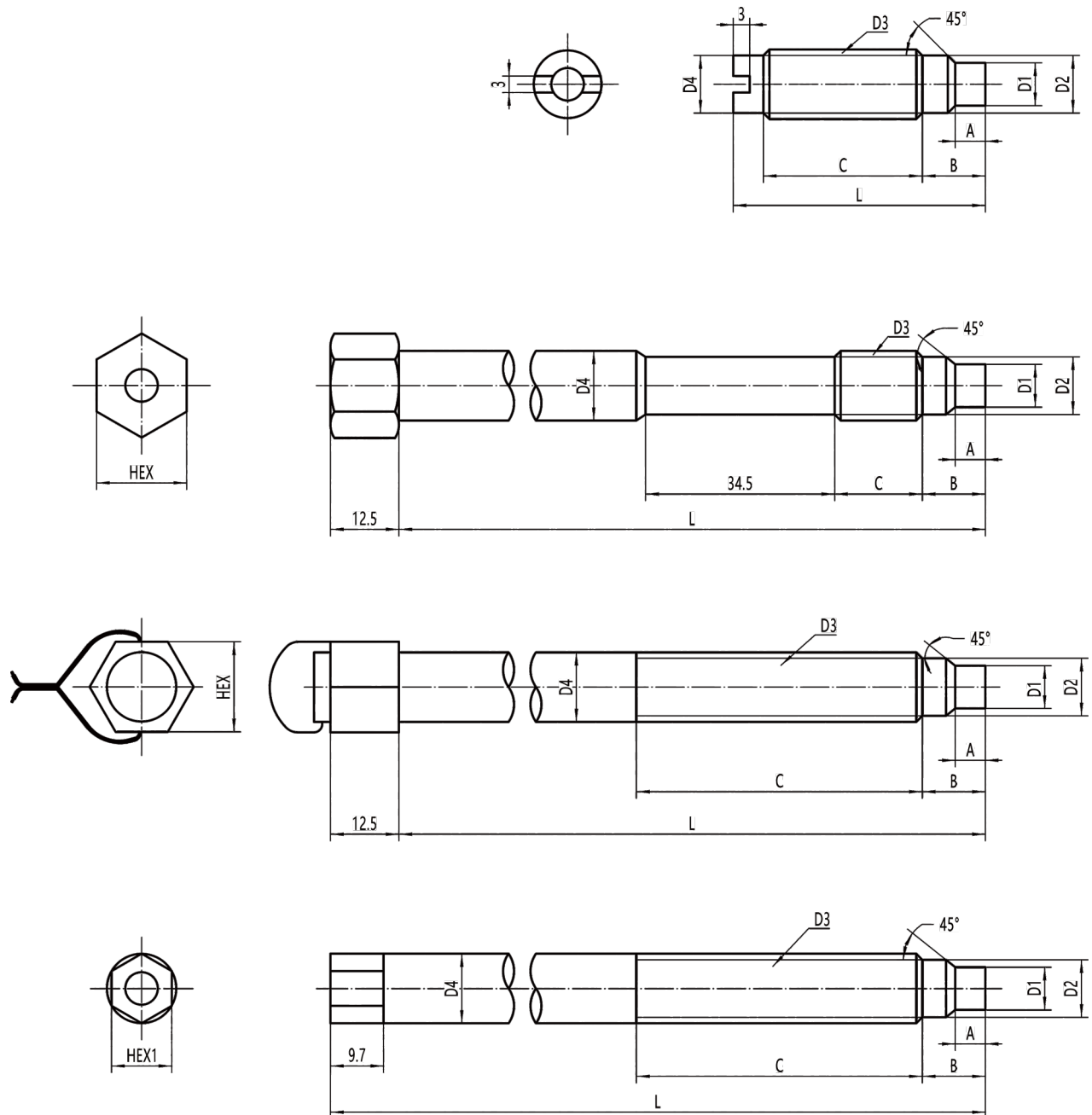
## 4. Technical data

Pressure range : 0…2500psi, 0…15000psi

Temperature range : 0…400C°

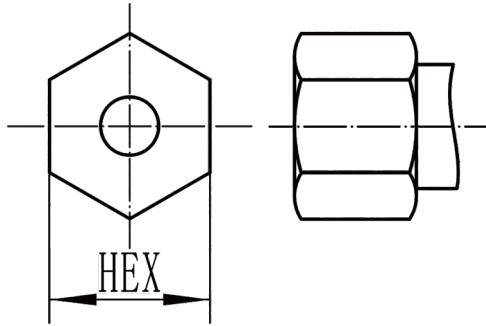
Material : 304 stainless steel

## 5. Dimensions

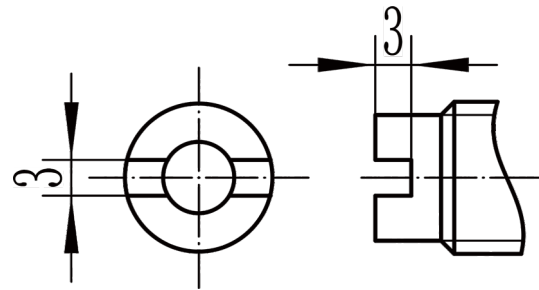


Product Type	D3	D1	D2	A	B	D4	HEX
Standard	1/2-20UNF	Φ7.8	Φ10.5	5.5	11.5	Φ12.7	16
	M14X1.5	Φ7.8	Φ11.5	5.5	11.5	Φ12.7	16
	M18X1.5	Φ9.8	Φ15.8	5.5	14	Φ12.7	16
	5/8-11UNC	Φ8.9	Φ12.4	6	14	Φ12.7	16
Product Type	D3	D1	D2	A	B	D4	HEX1
Y type	1/2-20UNF	Φ7.8	Φ10.5	5.5	11.5	Φ12.7	11

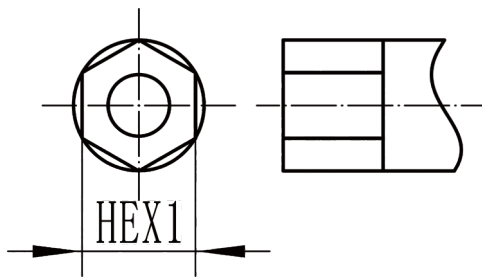
## 6. Lock Type



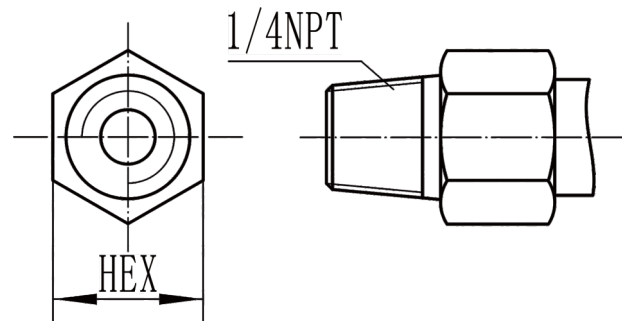
HEX Nut



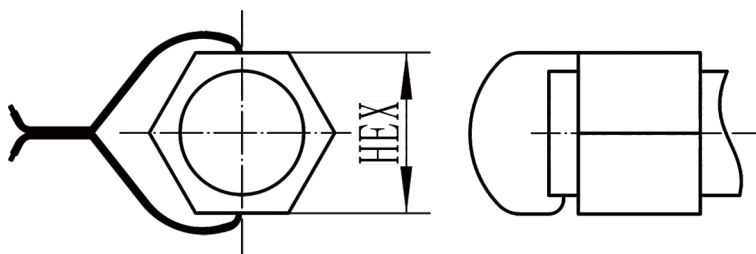
Slotted Nut



Milling HEX



HEX 1/4 NPT Fitting



HEX with alarm

## 7. Ordering Guide

Serie No	BP224	X	-	X	-	X	-	X	-	X	-	X
Product Type	Stanadard	--										
	Y Type	Y										
Pressure Range	17MPa 170bar 2500psi			2.5M								
	20MPa 200bar 3000psi			3M								
	25MPa 250bar 3500psi			3.5M								
	35MPa 350bar 5000psi			5M								
	50MPa 500bar 7500psi			7.5M								
	60MPa 600bar 8500psi			8.5M								
	65MPa 650bar 9500psi			9.5M								
	70MPa 700bar 10000psi			10M								
	85MPa 850bar 12500psi			12.5M								
	100MPa 1000bar 15000psi			15M								
Process Connection	1/2-20UNF					1/2						
	M14×1.5					M14						
	5/8-11UNC					5/8						
	M18×1.5					M18						
Rigid stem Length	46mm							1.8				
	64mm							2.5				
	76mm							3				
	102mm							4				
	152mm							6				
	178mm							7				
	203mm							8				
	228mm							9				
	317.5mm							12				
	xmm							xmm				
Thread length	Stanadard							--				
	25.4mm							L25.4				
	29mm							L29				
	41mm							L41				
	53mm							L53				
	58mm							L58				
	xmm							LX				
Locking type and polymer discharge Options	Hex Nut											N
	Slotted Nut											S
	Milling Hex											M
	Hex with Alarm											K
	Hex 1/4NPT Fitting											1/4NPT

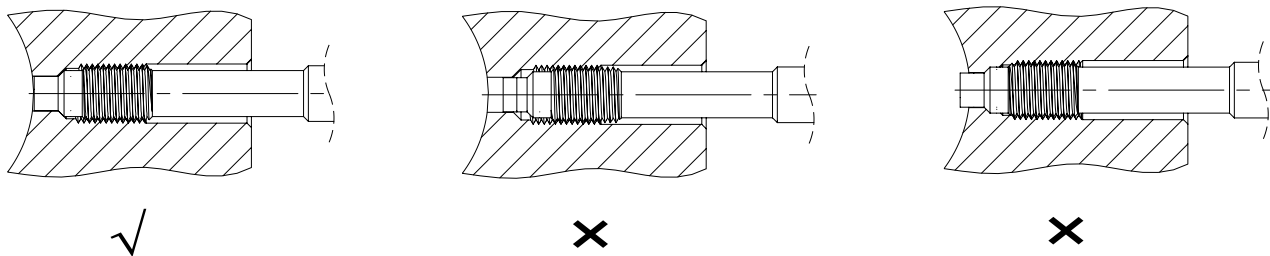
## 8. Installation & Removal

When installing the rupture disk, the rupture disk hole should be within the size requirement marked in following drawing and the assembly accuracy can be checked by testing bolts. Before installing the rupture disk , first clean the impurities in the hole and between the threads, then the thread of the sensor is coated with heat-resistant slurry, the screw teeth can be avoided.

The installation force is very important, the installation torque of the rupture disk can only act on the shaft (hexagon), do not apply any force to its head. The housing should be kept away from high temperature areas.

1/2-20 UNF /M14×1.5= Maximum starting torque: 40Nm

M18 x 1.5 = Maximum starting torque: 50 Nm

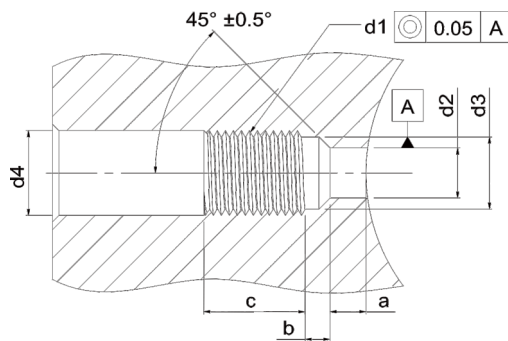




### Removal

Rupture disk removal must be completed under heating conditions (plastic melting point).

When removing the rupture disk, note that the diaphragm does not contact the pressure. The force to unload the rupture disk must be applied on the shaft (HEX).



d1	M18X1.5	M14X1.5	1/2-20UNF-2A
d2	∅ 9.9 <sup>+0.1</sup>	∅ 7.9 <sup>+0.1</sup>	∅ 7.9 <sup>+0.1</sup>
d3	∅ 16.1 <sup>+0.1</sup>	∅ 11.7 <sup>+0.1</sup>	∅ 10.7 <sup>+0.1</sup>
d4	∅ 20	∅ 15	∅ 14
a	6.1 <sup>-0.1</sup>	5.7 <sup>-0.1</sup>	5.7 <sup>-0.1</sup>
b	4 <sup>-0.2</sup>	3.2 <sup>-0.2</sup>	3.2 <sup>-0.2</sup>
c	25	19	19

## 9. Transport and storage

Bp224 Rupture disk's induction diaphragm is protected by a protective cap, which should be tightened at any time of storage and opened only when installed.