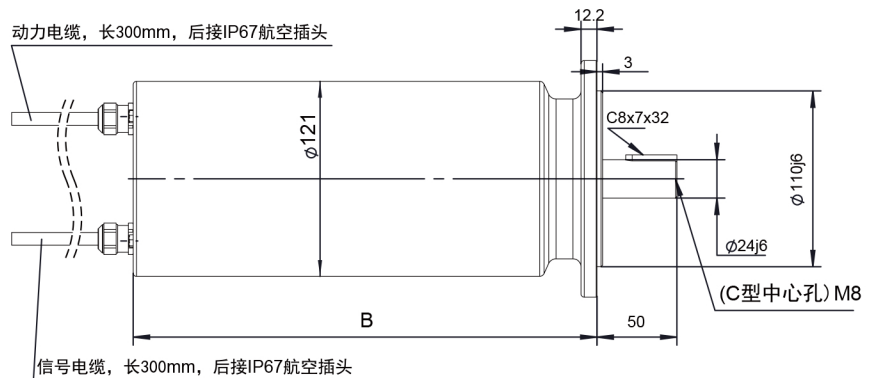
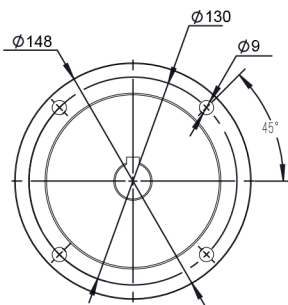


# PASL130 Stainless Steel Series



Model		PASL130-E03630H	PASL130-E04920H	PASL130-E05720H
Stall Torque	N.m	4.59	6.33	8.06
Stall Current	A	3.3	3.2	3.0
Operating Voltage	VAC	380-480	380-480	380-480
Rated Power	KW	1.12	1.02	1.18
Rated Torque	N.m	3.55	4.87	5.65
Rated Speed	Rpm	3000	2000	2000
Rated Current	A	2.5	2.5	2.1
Maximum Torque	N.m	16.0	24.0	32.0
Maximum Current	A	12.7	12.6	12.6
Moment Of Inertia	Kgm <sup>2</sup>	2.48(2.93)	3.55(4.00)	4.61(5.06)
Length		L1	L2	L3

## Dimensions



	B(without brake) (mm)	B(with brake) (mm)
L1	198	243
L2	223	268
L3	248	293