

PASD142

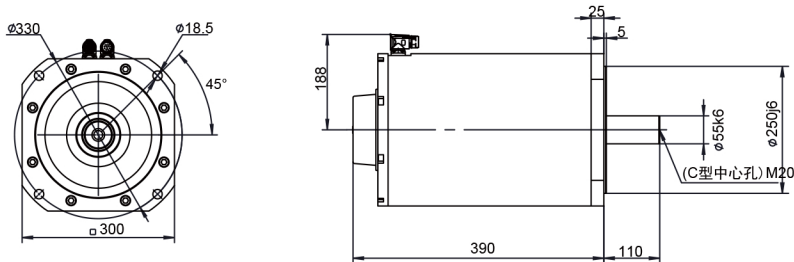
Direct Drive

Series 135N.m

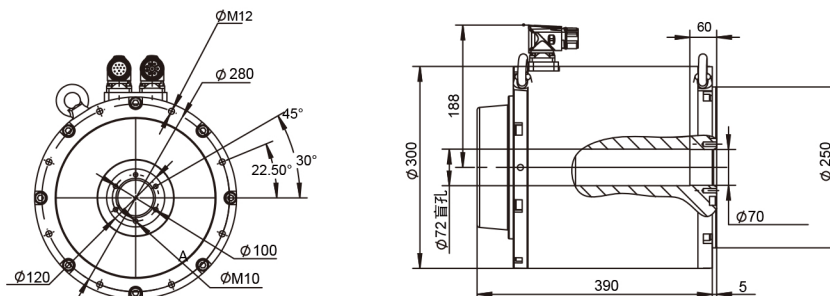


	Model	PASD142-EA3102	PASD142-EA2704	PASD142-EA2306	PASD142-EA1908
Stall Torque	N.m	135	135	135	135
Stall Current	A	6.1	12.2	17.4	22.0
Rated Power	KW	2.74	5.32	7.73	9.97
Rated Torque	N.m	131	127	123	119
Rated Speed	Rpm	200	400	600	800
Rated Current	A	5.9	11.5	15.8	19.4
Maximum Torque	N.m	340	340	340	340
Maximum Current	A	17.0	34.0	48.2	61.1
Moment Of Inertia	Kgm ²	0.10	0.10	0.10	0.10
Number Of Pole Pairs		32	32	32	32
Motor Weight	Kg	75	75	75	75
Power Connector		M23 8-pin	M23 8-pin	M23 8-pin	M23 8-pin
Feedback Connector		M23	M23	M23	M23

Dimensions (Solid Shaft)



Dimensions (Hollow Shaft)



PASD142

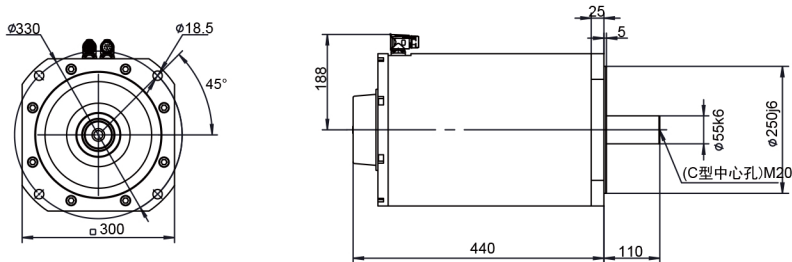
Direct Drive

Series 195N.m

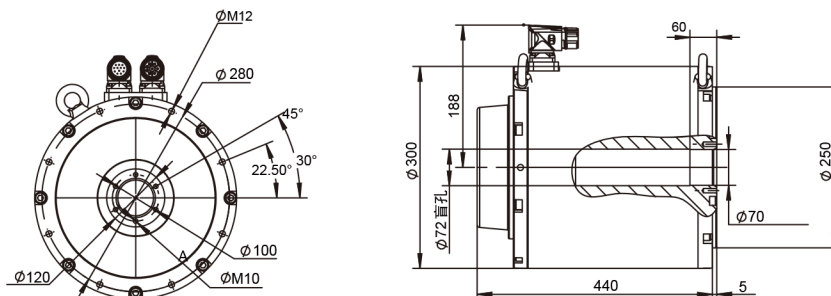


Model		PASD142-EA8902	PASD142-EA8603	PASD142-EA8304	PASD142-EA8005	PASD142-EA7706
Stall Torque	N.m	195	195	195	195	195
Stall Current	A	8.4	13.2	16.7	21.2	23.6
Rated Power	KW	3.96	5.84	7.67	9.42	11.1
Rated Torque	N.m	189	186	183	180	177
Rated Speed	Rpm	200	300	400	500	600
Rated Current	A	8.1	12.6	15.7	19.6	21.4
Maximum Torque	N.m	510	510	510	510	510
Maximum Current	A	24.1	38.2	48.2	61.1	67.9
Moment Of Inertia	Kgm ²	0.15	0.15	0.15	0.15	0.15
Number Of Pole Pairs		32	32	32	32	32
Motor Weight	Kg	100	100	100	100	100
Power Connector		M23 8-pin	M23 8-pin	M23 8-pin	M23 8-pin	M23 8-pin
Feedback Connector		M23	M23	M23	M23	M23

Dimensions (Solid Shaft)



Dimensions (Hollow Shaft)



PASD 142

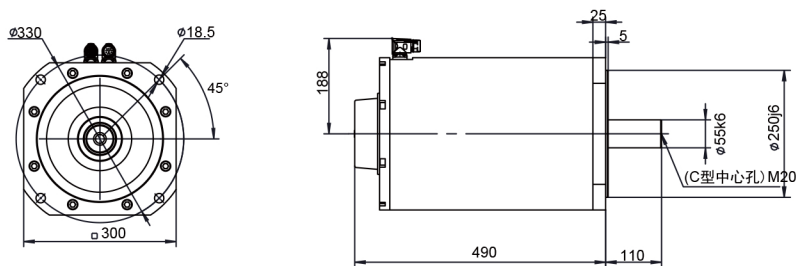
Direct Drive

Series 250N.m



Model		PASD142-EB4202	PASD142-EB3803	PASD142-EB3404	PASD142-EB3005
Stall Torque	N.m	250	250	250	250
Stall Current	A	11.3	16.1	20.4	24.5
Rated Power	KW	5.07	7.48	9.80	12.0
Rated Torque	N.m	242	238	234	230
Rated Speed	Rpm	200	300	400	500
Rated Current	A	11.0	15.3	19.1	22.5
Maximum Torque	N.m	680	680	680	680
Maximum Current	A	34.0	48.2	61.1	73.3
Moment Of Inertia	Kgm ²	0.19	0.19	0.19	0.19
Number Of Pole Pairs		32	32	32	32
Motor Weight	Kg	130	130	130	130
Power Connector		M23 8-pin	M23 8-pin	M23 8-pin	M23 8-pin
Feedback Connector		M23	M23	M23	M23

Dimensions (Solid Shaft)



Dimensions (Hollow Shaft)

