

# PASD115

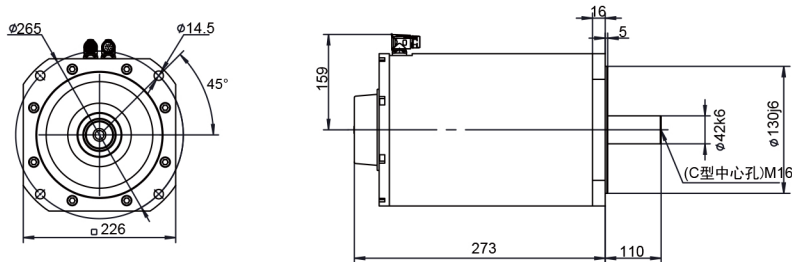
## Direct Drive

### Series 85N.m

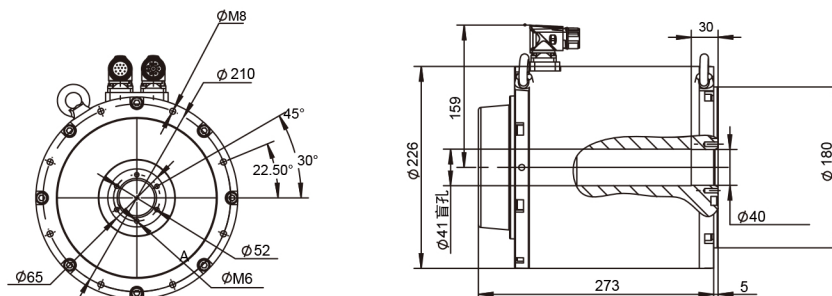


| Model                |                  | PASD115-E83402 | PASD115-E81804 | PASD115-E80006 | PASD115-E78108 | PASD115-E76210 |
|----------------------|------------------|----------------|----------------|----------------|----------------|----------------|
| Stall Torque         | N.m              | 85             | 85             | 85             | 85             | 85             |
| Stall Current        | A                | 4.2            | 7.4            | 10.9           | 14.3           | 19.1           |
| Rated Power          | KW               | 1.75           | 3.43           | 5.03           | 6.54           | 7.98           |
| Rated Torque         | N.m              | 83.4           | 81.8           | 80.0           | 78.1           | 76.2           |
| Rated Speed          | Rpm              | 200            | 400            | 600            | 800            | 1000           |
| Rated Current        | A                | 4.1            | 7.1            | 10.3           | 13.1           | 17.1           |
| Maximum Torque       | N.m              | 200            | 200            | 200            | 200            | 200            |
| Maximum Current      | A                | 10.6           | 18.8           | 27.6           | 36.1           | 48.3           |
| Moment Of Inertia    | Kgm <sup>2</sup> | 0.038          | 0.038          | 0.038          | 0.038          | 0.038          |
| Number Of Pole Pairs |                  | 24             | 24             | 24             | 24             | 24             |
| Motor Weight         | Kg               | 46             | 46             | 46             | 46             | 46             |
| Power Connector      |                  | M23 8-pin      | M23 8-pin      | M23 8-pin      | M23 8-pin      | M23 8-pin      |
| Feedback Connector   |                  | M23            | M23            | M23            | M23            | M23            |

#### Dimensions (Solid Shaft)



#### Dimensions (Hollow Shaft)



# PASD115

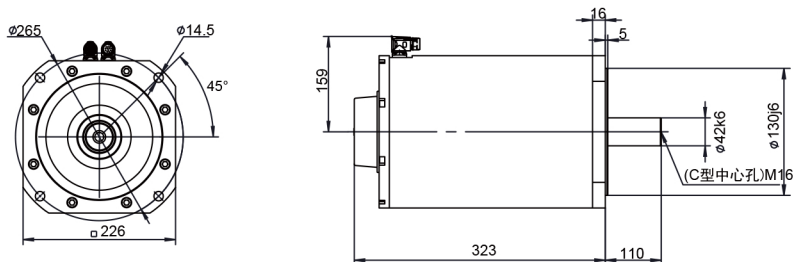
## Direct Drive

### Series 114N.m

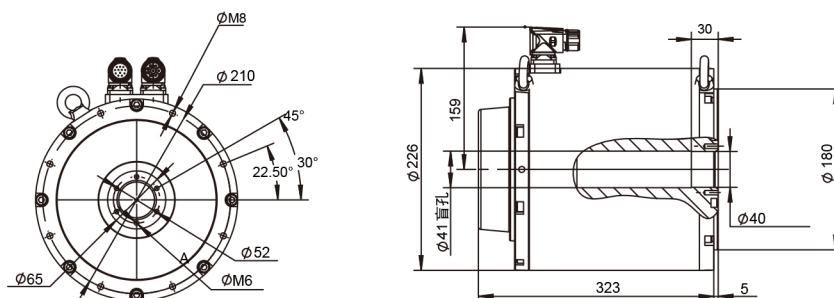


| Model                |                  | PASD115-EA1202 | PASD115-EA0904 | PASD115-EA0606 | PASD115-EA0408 |
|----------------------|------------------|----------------|----------------|----------------|----------------|
| Stall Torque         | N.m              | 114            | 114            | 114            | 114            |
| Stall Current        | A                | 5.5            | 9.8            | 15.1           | 20.2           |
| Rated Power          | KW               | 2.35           | 4.57           | 6.66           | 8.71           |
| Rated Torque         | N.m              | 112            | 109            | 106            | 104            |
| Rated Speed          | Rpm              | 200            | 400            | 600            | 800            |
| Rated Current        | A                | 5.4            | 9.3            | 14.1           | 18.4           |
| Maximum Torque       | N.m              | 300            | 300            | 300            | 300            |
| Maximum Current      | A                | 15.5           | 27.6           | 42.8           | 57.0           |
| Moment Of Inertia    | Kgm <sup>2</sup> | 0.056          | 0.056          | 0.056          | 0.056          |
| Number Of Pole Pairs |                  | 24             | 24             | 24             | 24             |
| Motor Weight         | Kg               | 58             | 58             | 58             | 58             |
| Power Connector      |                  | M23 8-pin      | M23 8-pin      | M23 8-pin      | M23 8-pin      |
| Feedback Connector   |                  | M23            | M23            | M23            | M23            |

#### Dimensions (Solid Shaft)



#### Dimensions (Hollow Shaft)



# PASD115

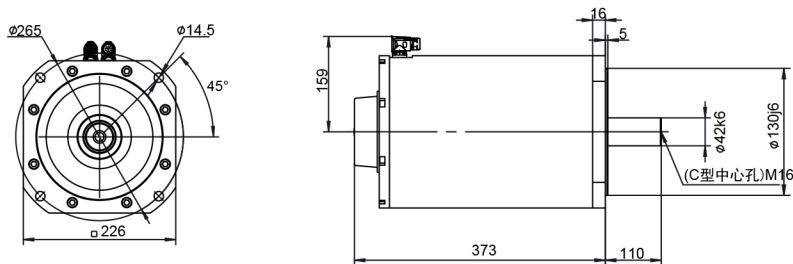
## Direct Drive

### Series 134N.m



| Model                |                  | PASD115-EA3102 | PASD115-EA2804 | PASD115-EA2406 | PASD115-EA2008 |
|----------------------|------------------|----------------|----------------|----------------|----------------|
| Stall Torque         | N.m              | 134            | 134            | 134            | 134            |
| Stall Current        | A                | 6.7            | 12.4           | 16.8           | 22.8           |
| Rated Power          | KW               | 2.74           | 5.36           | 7.79           | 10.1           |
| Rated Torque         | N.m              | 131            | 128            | 124            | 120            |
| Rated Speed          | Rpm              | 200            | 400            | 600            | 800            |
| Rated Current        | A                | 6.5            | 11.8           | 15.6           | 20.4           |
| Maximum Torque       | N.m              | 400            | 400            | 400            | 400            |
| Maximum Current      | A                | 21.5           | 39.8           | 54.0           | 73.1           |
| Moment Of Inertia    | Kgm <sup>2</sup> | 0.074          | 0.074          | 0.074          | 0.074          |
| Number Of Pole Pairs |                  | 24             | 24             | 24             | 24             |
| Motor Weight         | Kg               | 70             | 70             | 70             | 70             |
| Power Connector      |                  | M23 8-pin      | M23 8-pin      | M23 8-pin      | M23 8-pin      |
| Feedback Connector   |                  | M23            | M23            | M23            | M23            |

#### Dimensions (Solid Shaft)



#### Dimensions (Hollow Shaft)

