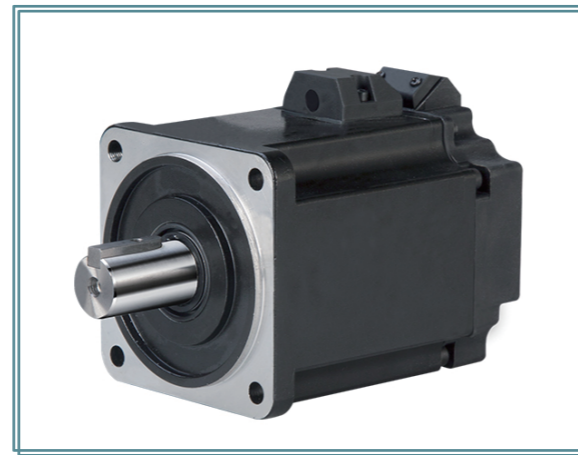
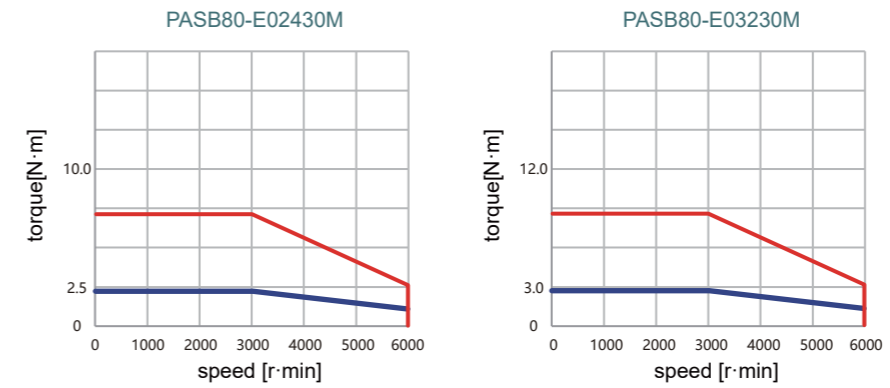


PASB80 High Inertia Series



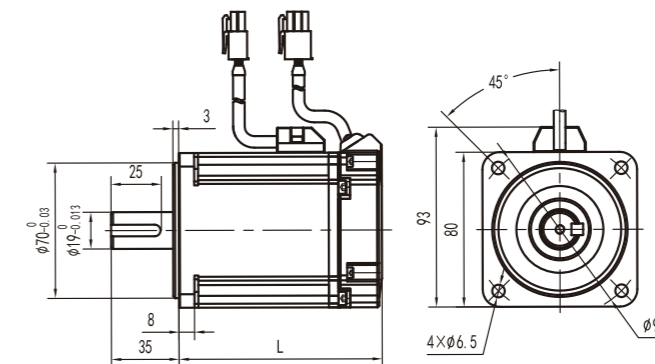
Model		PASB80-E02430M	PASB80-E03230M													
Rated Power	W	750	1000													
Rated Voltage	VAC	220	220													
Rated Current	A	3.8	5.5													
Rated Torque	N.m	2.4	3.2													
Rated Speed	r/min	3000	3000													
Peak Current	A	11.4	16.5													
Peak Torque	N.m	7.2	9.6													
Peak Speed	r/min	6000	6000													
Voltage Constant	V/1000r/min	38.5	38.5													
Torque Coefficient	N.m/A	0.6	0.6													
Line-Line Resistance	Ω	1.33	1.1													
Line-Line Inductance	mH	5.6	4.8													
Electrical Time-Constant	ms	4.2	4.4													
Rotor Inertia	$\text{kg}\cdot\text{m}^2 \times 10^{-4}$	1.62	2.1													
Weight	kg	2.5	3.2													
Number Of Pole Pairs		5 Pairs														
Insulation Class		Class F														
Protection Class		IP65(IP67 optional)														
Environment		Ambient Temperature:-20-50°C/Ambient Humidity~90%(No Frosting Condition)														
Encode Resolution		2500CPR(Absolute encoder available)														
Winding Socket	Winding Wire	PE	U	V	W											
	Socket Number	1	2	3	4											
Encoder Socket (Absolute Type)	Signal Pin Definition	PE	5V	0V	SD+	SD-	VB+	VB-								
	Male Pin Number	1	2	3	4	5	6	7								
Encoder Socket (Incremental Type)	Signal Pin Definition	Shield	5V	0V	B+	Z-	U+	Z+	U-	A+	V+	W+	V-	A-	B-	W-
	Male Pin Number	1	2	3	4	5	6	7	8	9	10	11	12	13	14	15

Torque Characteristic Diagram



Dimensions	750W		1000W	
	Regular / Short Type		Regular / Short Type	
L Without Brake (mm)	123.5	105	137.5	119
L With Brake (mm)	160.5	142	174.5	156

Without Brake



With Brake

