

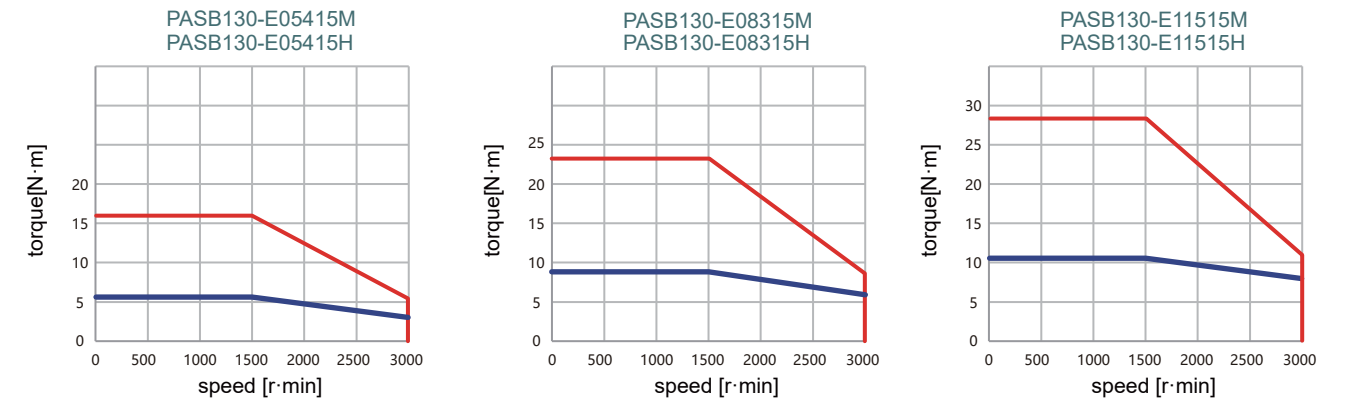
PASB130

High Inertia Series



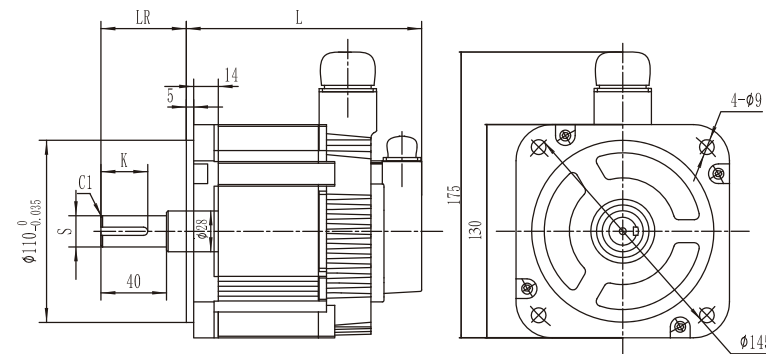
Model		PASB130 -E05415M	PASB130 -E05415H	PASB130 -E08315M	PASB130 -E08315H	PASB130 -E11515M	PASB130 -E11515H									
Rated Power	W	850	850	1300	1300	1800	1800									
Rated Voltage	VAC	220	380	220	380	220	380									
Rated Current	A	6.9	4	10.7	6	13.8	8.5									
Rated Torque	N.m	5.39	5.39	8.34	8.34	11.5	11.5									
Rated Speed	r/min	1500	1500	1500	1500	1500	1500									
Peak Current	A	20.7	12	28	16.7	34.4	21.2									
Peak Torque	N.m	16.7	16.7	23.3	23.3	28.7	28.7									
Peak Speed	r/min	3000	3000	3000	3000	3000	3000									
Voltage Constant	V/1000r/min	50	85	52	92	52	90									
Torque Coefficient	N.m/A	0.78	1.35	0.78	1.39	0.83	1.35									
Line-Line Resistance	Ω	1	2.6	0.5	1.54	0.35	1.2									
Line-Line Inductance	mH	5	16.2	3.2	10.5	2.5	8.3									
Electrical Time-Constant	ms	5	6.2	6.4	6.8	7.14	6.9									
Rotor Inertia	$\text{kg}\cdot\text{m}^2 \times 10^{-4}$	14.8	14.8	20.6	20.6	25.8	25.8									
Weight	kg	6.2	6.2	8	8	10.4	10.4									
Number Of Pole Pairs		5 Pairs														
Insulation Class		Class F														
Protection Class		IP65(IP67 optional)														
Environment		Ambient Temperature:-20-50°C/Ambient Humidity~90%(No Frosting Condition)														
Encode Resolution		2500CPR(Absolute encoder available)														
Winding Socket	Winding Wire	PE		U		V										
	Socket Number	1		2		3										
Encoder Socket (Absolute Type)	Signal Pin Definition	PE	5V	0V	SD+	SD-	VB+	VB-								
	Male Pin Number	1	2	3	4	5	6	7								
Encoder Socket (Incremental Type)	Signal Pin Definition	Shield	5V	0V	B+	Z-	U+	Z+	U-	A+	V+	W+	V-	A-	B-	W-
	Male Pin Number	1	2	3	4	5	6	7	8	9	10	11	12	13	14	15

Torque Characteristic Diagram



Dimensions	850W	850W	1300W	1300W	1800W	1800W
	Without Brake (mm)	With Brake (mm)	Shaft Extension	Shaft Diameter	Key Length	Key Width
850W	149	182	58	19	25	5
1300W	170	203	58	22	25	6
1800W	188	221	58	24	25	8

Without Brake



With Brake

