



### Motor Characteristics

- ◆ Step Angle: 1.8°
- ◆ Frame Size: 60mm
- ◆ Holding Torque: 0.9-3.0N.m
- ◆ Built-in 2500-line encoder
- ◆ High efficiency, High response
- ◆ High precision, High torque

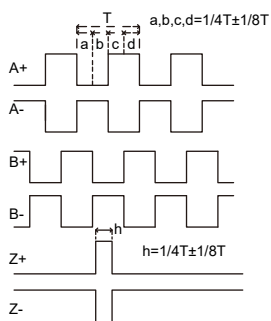
### Specifications

Model	Phase Current	Phase Resistance	Phase Inductance	Lead Wire	Holding Torque	Length (L)	Rotor Inertia	Weight
	A/∅	Ω/∅	mH	No.	N.m	mm	g.cm <sup>2</sup>	g
PSSM60S45-442-325EC	4.2	0.4	0.7	4	0.9	45	200	600
PSSM60S54-442-325EC	4.2	0.5	1.4	4	1.6	54	350	800
PSSM60S90-455-325EC	5.5	0.42	1.8	4	3.0	90	780	1600

### Encoder Specifications

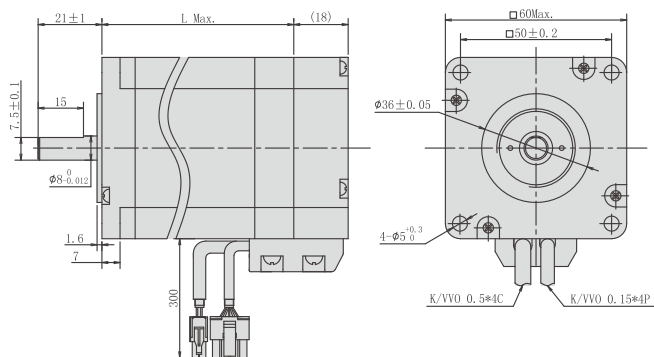
Encoder Resolution	2500CPR	
Supply voltage	4.5~5.5V	
Supply current(Max)	100mA	
Signal	A+,A-,B+,B-,Z+,Z-	
Rise/fall time(Max)	100ns	
Frequency	300kHz	
Output voltage	"H"	2.4V min
	"L"	0.4V Max
Max.output current	20mA	

### Encoder Waveform



### Outline Drawing

- Motor Without Brake



- Motor With Brake

