

35mm series



Motor characteristics

- ◆ Step Angle: 1.8°
- ◆ Frame Size: 35mm
- ◆ Holding Torque: 20-35N.cm
- ◆ Built-in 2500-line encoder
- ◆ High efficiency, High response
- ◆ High precision, High Torque

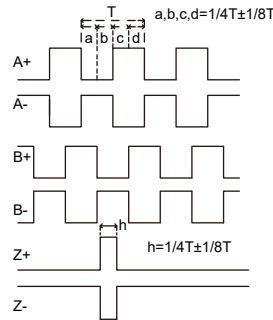
Specifications

Model	Phase Current	Phase Resistance	Phase Inductance	Lead Wire	Holding Torque	Length (L)	Rotor Inertia	Weight
	A/∅	Ω/∅	mH	No.	N.cm	mm	g.cm <sup>2</sup>	g
PSSM35S34-418-325EC	1.8	1.7	2.1	4	20	34	20	250
PSSM35S53-418-325EC	1.8	2.9	4.8	4	35	53	31	390

Encoder Specifications

Encoder Resolution	2500CPR	
Supply voltage	4.5~5.5V	
Supply current(Max)	100mA	
Signal	A+,A-,B+,B-,Z+,Z-	
Rise/fall time(Max)	100ns	
Frequency	300kHz	
Output voltage	"H"	2.4V min
	"L"	0.4V Max
Max.output current	20mA	

Encoder Waveform



Outline Drawing

- Motor Without Brake

