

28mm series



Motor Characteristics

- ◆ Step Angle: 1.8°
- ◆ Frame Size: 28mm
- ◆ Holding Torque: 7.0-12N.cm
- ◆ Built-in 2500-line encoder
- ◆ High efficiency, High response
- ◆ Index signal, Zero position
- ◆ High precision, High Torque

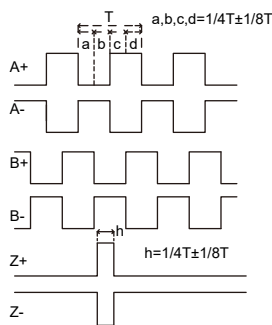
Motor Specifications

Model	Phase Current	Phase Resistance	Phase Inductance	Lead Wire	Holding Torque	Length (L)	Rotor Inertia	Weight
	A/∅	Ω/∅	mH	No.	N.cm	mm	g.cm ²	g
PSSM28S34-413-325EC	1.3	1.5	1.1	4	7.0	34	9	115
PSSM28S41-413-325EC	1.3	1.9	2.5	4	8.0	41	12	145
PSSM28S50-413-325EC	1.3	2.4	2.3	4	12	50	18	175

Encoder Specifications

Encoder Resolution	2500CPR	
Supply voltage	4.5~5.5V	
Supply current(Max)	100mA	
Signal	A+,A-,B+,B-,Z+,Z-	
Rise/fall time(Max)	100ns	
Frequency	300kHz	
Output voltage	"H"	2.4V min
	"L"	0.4V Max
Max.output current	20mA	

Encoder Waveform



Outline Drawing

- Motor Without Brake

