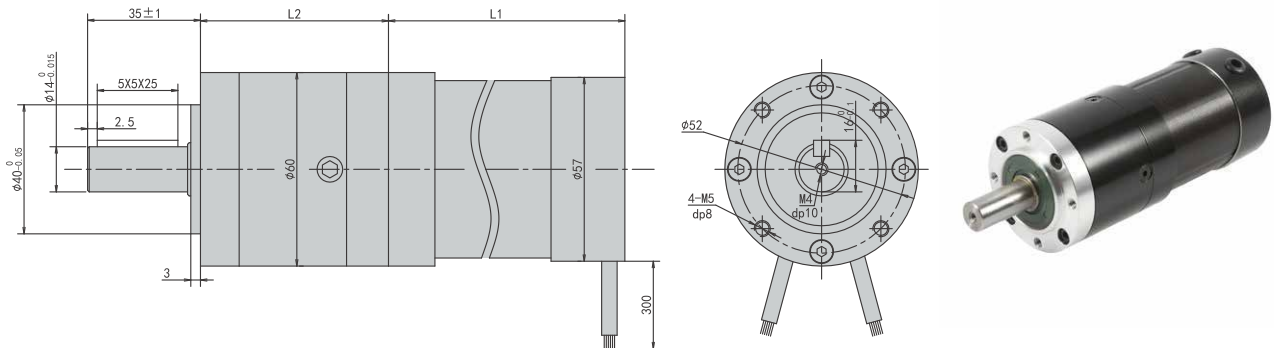


# PBLR57GES Series

## Planetary Gearbox BLDC Motor



### Motor Specifications

Motor Model	Unit	PBLR57GES489040	PBLR57GES481840	PBLR57GES482740
Number of Phase		3		
Number of Poles		4		
Rated Voltage	VDC	48		
Rated Speed	Rpm	4000		
Rated Torque	N.m	0.22	0.44	0.66
Rated Power	W	92	184	276
Rated Current	A	2.5	5.1	7.6
Peak Current	A	7.7	15.3	22.8
Peak Torque	N.m	0.66	1.32	1.98
Rotor Inertia	kg.cm <sup>2</sup>	1.19	1.73	1.73
Torque Constant	N.m/A	0.08	0.08	0.08
Torque Constant	V/krpm	9.2	9.2	9.2
Line-Line Resistance	Ω	0.75	0.55	0.41
Line-Line Inductance	mH	2.2	2.1	1.1
Length L1	mm	55	75	95
Weight	kg	0.72	0.95	1.2

### Gearbox Electrical Specifications

Reduction stage	Unit	1	2
Transmission efficiency	%	95	90
Max radial load	N	580	580
Max axial load	N	340	340
Rated admissible torque	N.m	25	40
Reduction Ratio		5,10	15,20,25,30,40,50
Length L2	mm	48	64