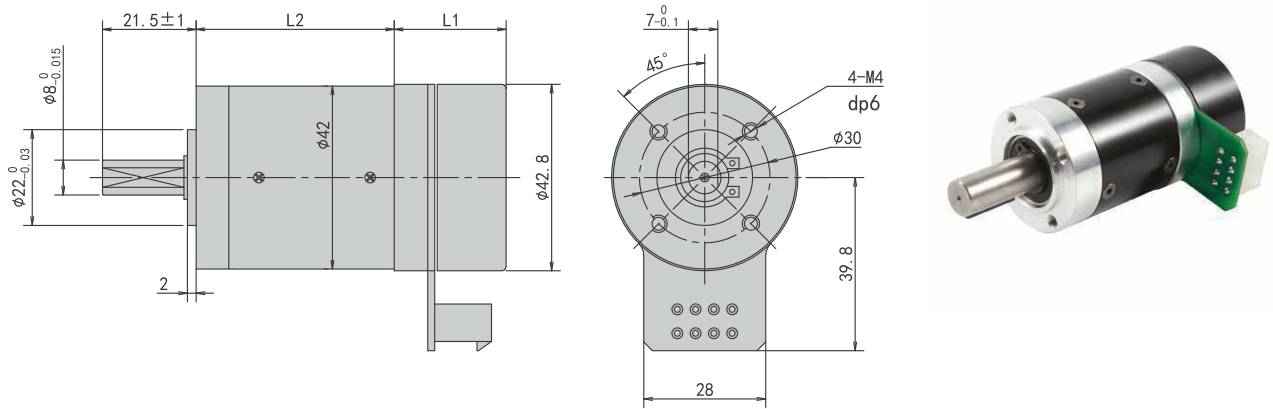


PBLR42GEL Series

Outer Rotor Gearbox BLDC Motor



Electrical Specifications

Motor Model	Unit	PBLR42GEL243550	PBLR42GEL245050	PBLR42GEL247050
Number of Phase		3		
Number of Poles		16		
Rated Voltage	VDC	24		
Rated Speed	Rpm	5000		
Rated Torque	N.m	0.06	0.1	0.13
Rated Power	W	35	50	70
Rated Current	A	2.2	3.2	4.4
Peak Current	A	6.6	9.6	13.2
Peak Torque	N.m	0.18	0.3	0.39
Rotor Inertia	kg.cm ²	0.13	0.23	0.33
Torque Constant	N.m/A	0.03	0.03	0.03
Torque Constant	V/krpm	2.8	2.8	2.8
Line-Line Resistance	Ω	2.0	1.5	1.0
Line-Line Inductance	mH	1.5	1.0	0.5
Length L1	mm	21.3	26.3	31.3
Weight	kg	0.12	0.18	0.24

Gearbox Electrical Specifications

Reduction stage		1	2
Transmission efficiency	%	95	90
Max radial load	N	200	200
Max axial load	N	100	100
Rated admissible torque	N.m	6	12
Reduction Ratio		5,10	20,25,35,40,45,50,100
Length L2	mm	36	45.5