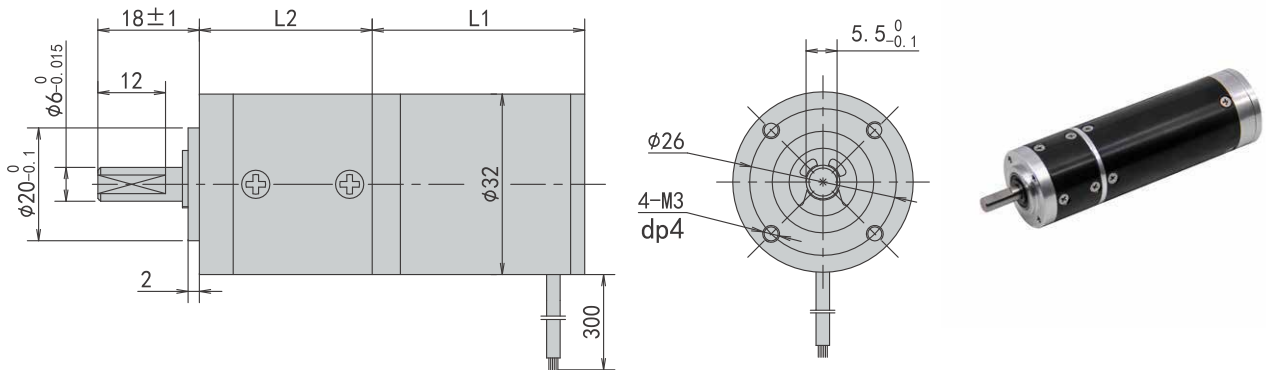


PBLR32GEL Series

Planetary Gearbox BLDC Motor



Motor Specifications

Motor Model	Unit	PBLR32GEL241240	PBLR32GEL241840	PBLR32GEL242540
Number of Phase		3		
Number of Poles		8		
Rated Voltage	VDC	24		
Rated Speed	Rpm	4000		
Rated Torque	N.m	0.03	0.045	0.06
Rated Power	W	12.5	18.8	25
Rated Current	A	0.7	0.9	1.3
Peak Current	A	2.1	2.7	3.9
Peak Torque	N.m	0.09	0.13	0.18
Rotor Inertia	kg.cm ²	0.01	0.02	0.03
Torque Constant	N.m/A	0.04	0.04	0.04
Torque Constant	V/krpm	4.48	5.23	4.18
Line-Line Resistance	Ω	1.9	2.5	3.4
Line-Line Inductance	mH	0.9	1.1	1.3
Length L1	mm	56	66	76
Weight	kg	0.22	0.38	0.55

Gearbox Electrical Specifications

Reduction stage		1	2	3
Transmission efficiency	%	90	81	73
Max radial load	N	35	35	35
Max axial load	N	20	20	20
Rated admissible torque	N.m	0.3	1.2	2.5
Reduction Ratio		3.71,5.18,6.75	14,19,25,27,35,45	51,71,93,100,139,181,236,307
Length L2	mm	25.6	27.2	33.4