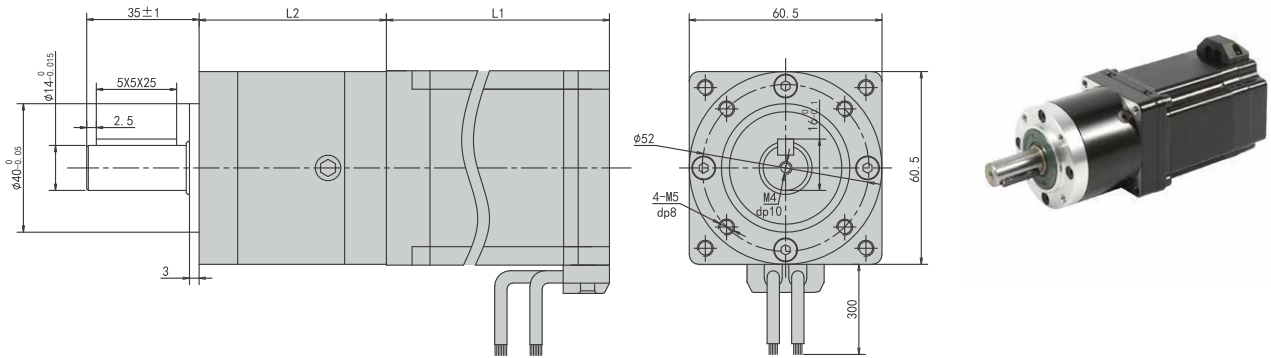


# PBLS60GES Series

## Planetary Gearbox BLDC Motor



### Motor Specifications

Motor Model	Unit	PBLS60GES487830	PBLS60GES481530	PBLS60GES482330
Number of Phase		3		
Number of Poles		8		
Rated Voltage	VDC	48		
Rated Speed	Rpm	3000		
Rated Torque	N.m	0.25	0.5	0.75
Rated Power	W	78	156	234
Rated Current	A	2.2	4.4	6.6
Peak Current	A	6.6	13.2	19.8
Peak Torque	N.m	0.75	1.5	2.25
Rotor Inertia	kg.cm <sup>2</sup>	0.5	0.9	1.3
Torque Constant	N.m/A	0.11	0.11	0.11
Torque Constant	V/krpm	10.5	10.5	10.5
Line-Line Resistance	Ω	1.5	0.6	0.5
Line-Line Inductance	mH	1.3	0.65	0.4
Length L1	mm	66	87	108
Weight	kg	0.9	1.25	1.0

### Gearbox Electrical Specifications

Reduction stage		1	2
Transmission efficiency	%	95	90
Max radial load	N	580	580
Max axial load	N	340	340
Rated admissible torque	N.m	25	40
Reduction Ratio		5,10	15,20,25,30,40,50
Length L2	mm	58	75