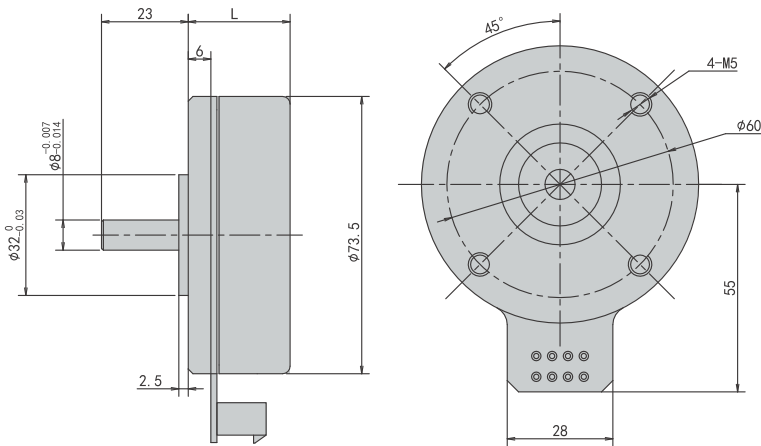


PBLR75EHL Series

Outer Rotor BLDC Motor



Options



General Specifications

Winding Type	Star/Delta
Hall Effect Angle	Electrical Angle of 120 degree
Radial Play	0.02mm@450g
Axial Play	0.08mm@450g
Max radial force	75N,10mm From the flange
Max axial force	15N
Dielectric Strength	600VAC/1S
Insulation Resistance	100MΩ,500VDC
Ambient Temperature	-20°C~+50°C
Insulation Class	Class B

Wiring Connection

Type	Color	Function
UL1007 AWG26	Red	Vcc
	Yellow	Hu
	Green	Hv
	Blue	Hw
	Black	GND
UL1007 AWG18	Yellow	Phase U
	Green	Phase V
	Blue	Phase W

Electrical Specifications

Motor Model	Unit	PBLR75EHL249030	PBLR75EHL241430	PBLR75EHL241830
Number of Phase		3		
Number of Poles		16		
Rated Voltage	VDC	24		
Rated Speed	Rpm	3000		
Rated Torque	N.m	0.3	0.45	0.6
Rated Power	W	90	140	180
Rated Current	A	5.8	8.9	11.6
Peak Current	A	17.4	26.7	34.8
Peak Torque	N.m	0.9	1.35	1.8
Rotor Inertia	kg.cm ²	1.5	1.9	2.3
Torque Constant	N.m/A	0.05	0.05	0.05
Torque Constant	V/krpm	4.5	4.5	4.5
Line-Line Resistance	Ω	0.5	0.4	0.3
Line-Line Inductance	mH	0.2	0.1	0.05
Length	mm	26.3	31.3	36.3
Weight	kg	0.5	0.7	0.9