

Ø25mm Precision Type

PM Stepper Gear Motor

PPMG25P Series

Key Features

- Small Size
- Smooth Movement
- Low Inertia

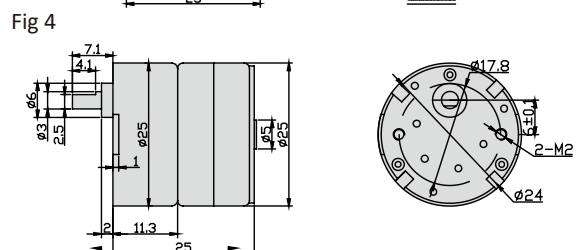
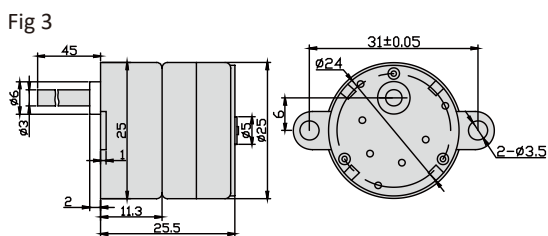
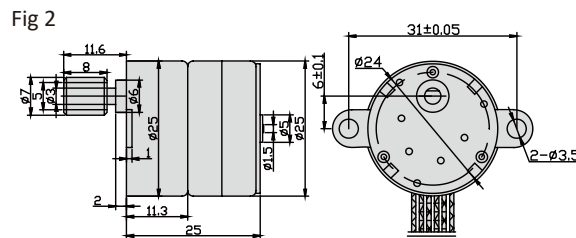
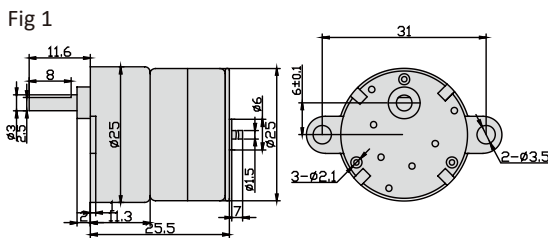
Step Angle Accuracy	±8%
Resistance Accuracy	±10%
Inductance Accuracy	±20%
Ambient Temperature	-10°C ~ 50°C
Insulation Resistance	100 MΩ Min.(At 500VDC)
Dielectric Strength	RMS for 2 Sec.(At 650±50VAC)
Insulation Class	Class E



Specifications

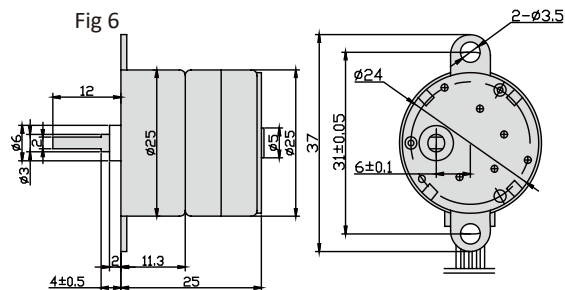
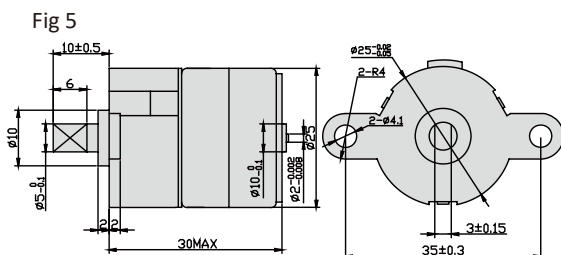
Series	Model Number	Voltage	Rated Current	Resistance per phase	No-load Starting Freq	Detent Torque	Rotor Inertia	Wiring Diagram	Gear Ratio	No. of Phase	Step Angle
		V/Ø	A	ohm	pps	g.cm/pps	g.cm	Wdg			
PPMG25P05	PPMG25P05-26	2.6	0.52	5	450	75/200	450	a	1:50	2	7.5/5
	PPMG25P05-35	3.5	0.36	9.6	420	100/200	500	a	1:102.5	2	7.5/5
PPMG25P60	PPMG25P60-14	13.5	0.105	128	720	1500/410	7700	a	1:102.5	4	7.5/60
PPMG25P20	PPMG25P20-12	12	0.08	150	600	500/100	1000	b	1:102.5	4	15/20
PPMG25P30	PPMG25P30-11	13.3	0.11	120	680	750/300	4000	b	1:102.5	4	7.5/30
PPMG25P10	PPMG25P10-50	5	0.5	10	720	400/100	1100	b	1:102.5	4	7.5/10
PPMG25P76	PPMG25P76-25	5	0.25	20	430	720/200	5000	b	1:102.5	4	15/76
PPMG25P60	PPMG25P60-12	12	0.12	100	650	2200/200	5000	a	1:102.5	2	7.5/60

Typical Outline

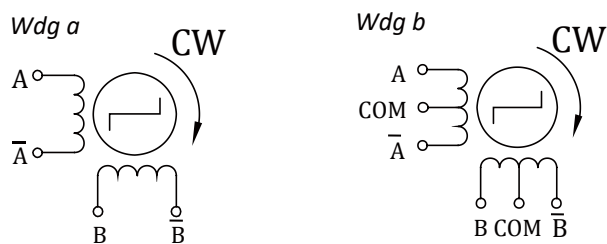


PPMG25P Series

● **Typical Outline**



● **Wiring Diagram**



- 2Phase Hybrid Stepper Motor
- 3Phase Hybrid Stepper Motor
- 5Phase Hybrid Stepper Motor
- Hybrid Stepper Gear Motor
- Lead Screw Linear Actuator
- Ball Screw Linear Actuator
- IP65 Stepper Motor
- Hollow Shaft Stepper Motor
- Stepper Motor With Brake
- Pancake Stepper Motor
- PM Stepper Motor
- Can-Stack Stepper Linear Actuator
- PM Stepper Gear Motor
- Stepper Motor Drive