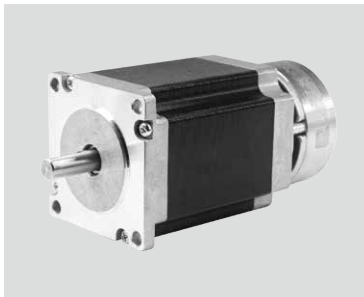


PHB60S Series

● Key Features

- Small Size
- Smooth Movement
- High Torque



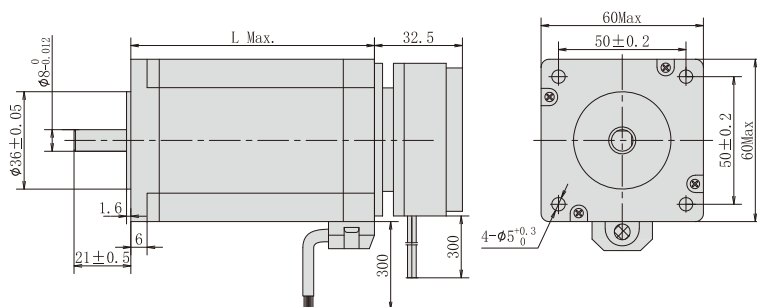
Step Angle	1.8°
Step Angle Accuracy	±5% (full step, no load)
Resistance Accuracy	±10%
Inductance Accuracy	±20%
Temperature Rise	80 °C Max.(rated current, 2 phase on)
Ambient Temperature	-20 °C ~ +50 °C
Insulation Resistance	100 MΩ Min., 500VDC
Dielectric Strength	500 VAC for one minute
Shaft Radial Play	0.02 Max. (450 g-load)
Shaft Axial Play	0.08 Max. (450 g-load)

● Specifications

- Bi-polar

Series & Length	Model Number	Holding Torque		Rated Current	Resistance per phase	Inductance per phase	Detent Torque		Rotor Inertia	
		N.cm	oz-in				A	ohm	mH	N.cm
PHB60S56B 56mm	PHB60S56B-404	160	224	4.2	0.4	1.2	4.0	5.6	350	1.925
PHB60S64B 64mm	PHB60S64B-404	180	252	4.2	0.55	1.2	5.0	7	450	2.475
PHB60S76B 76mm	PHB60S76B-404	220	308	4.2	0.6	1.8	7.0	9.8	550	3.025
PHB60S90B 90mm	PHB60S90B-404	260	364	4.2	0.8	3.0	12.0	16.8	780	4.290

● Mechanical Dimension



Series	L		Mass	
	mm	(in.)		g
PHB60S56B	56	(2.20)	700	(1.54)
PHB60S64B	64	(2.52)	950	(2.09)
PHB60S76B	76	(2.99)	1150	(2.53)
PHB60S90B	90	(3.54)	1400	(3.08)

2Phase Hybrid Stepper Motor

3Phase Hybrid Stepper Motor

5Phase Hybrid Stepper Motor

Hybrid Stepper Gear Motor

Lead Screw Linear Actuator

Ball Screw Linear Actuator

IP65 Stepper Motor

Hollow Shaft Stepper Motor

Stepper Motor With Brake

Pancake Stepper Motor

PM Stepper Motor

Can-Stack Stepper Linear Actuator

PM Stepper Gear Motor

Stepper Motor Drive