

PHBL60 Series

Ambient Temperature	-20 °C ~ +50 °C
Temperature Rise	80 °C Max. (rated current, 2 phase on)
Dielectric Strength	500 VAC for one minute
Insulation Resistance	Class B (Class F also available)



Motor Specs

Model	Voltage	Current	Resistance	Inductance	Lead Wire	Motor Length	
	V/∅	A/∅	Ω/∅	mH/∅	Pin	inch	mm
PHBL60□47-4S20	3.0	2.0	1.5	3.9	4	1.9326	47
PHBL60□47-4S30	1.8	3.0	0.6	1.6	4	1.9326	47
PHBL60□47-4S40	1.6	4.0	0.4	0.9	4	1.9326	47
PHBL60□68-4S30	3.0	3.0	1.0	3.4	4	2.8085	68.3
PHBL60□68-4S40	2.4	4.0	0.6	1.9	4	2.8085	68.3
PHBL60□68-4S50	1.5	5.0	0.3	1.2	4	2.8085	68.3

Note: Non-captive type (N), External type (E) or Captive type (C) is available, and please specify it with the blank box when ordering.

Lead Screw Specs

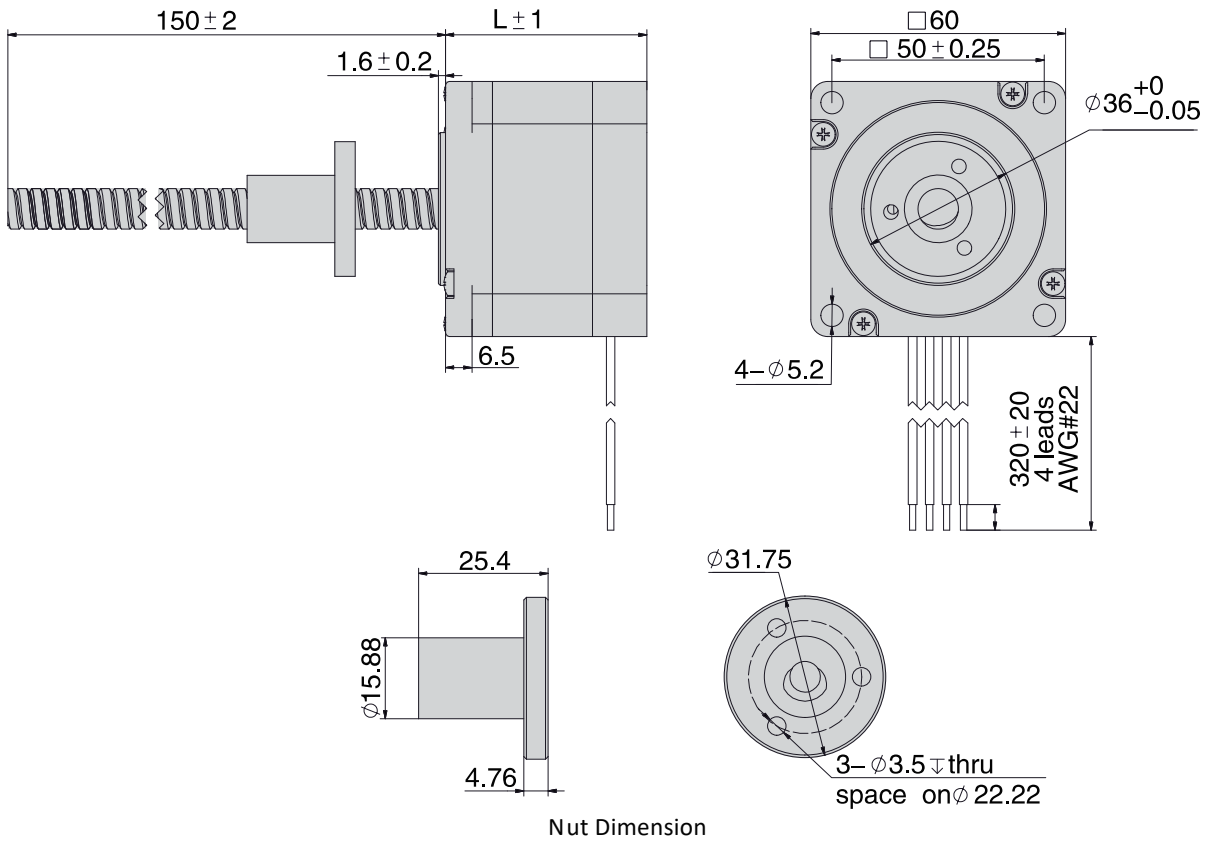
Lead Code	Screw Dia.		Lead		Travel/Step @ 1.8Deg*		Travel/Step @ 0.9Deg*	
	inch	mm	inch	mm	inch	mm	inch	mm
G	0.394	10.000	0.079	2.0	0.00042	0.01	0.00021	0.005
A	0.375	9.525	0.025	0.635	0.00013	0.003	0.00006	0.0016
D	0.375	9.525	0.05	1.27	0.00025	0.006	0.00013	0.0032
F	0.375	9.525	0.063	1.6002	0.00032	0.008	0.00016	0.004
H	0.375	9.525	0.083	2.1082	0.00042	0.01	0.00021	0.0053
K	0.375	9.525	0.1	2.54	0.0005	0.012	0.00025	0.0064
L	0.375	9.525	0.125	3.175	0.00063	0.015	0.00031	0.0079
P	0.375	9.525	0.167	4.2418	0.00084	0.021	0.00042	0.0106
R	0.375	9.525	0.2	5.08	0.001	0.025	0.0005	0.0127
S	0.375	9.525	0.25	6.35	0.00125	0.031	0.00063	0.0159
V	0.375	9.525	0.375	9.525	0.00188	0.047	0.00094	0.0238
W	0.375	9.525	0.384	9.7536	0.00192	0.048	0.00096	0.0244
Y	0.375	9.525	0.5	12.7	0.0025	0.063	0.00125	0.0318
Z	0.375	9.525	1.0	25.4	0.005	0.127	0.0025	0.0635

*values truncated

PHBL60 Series

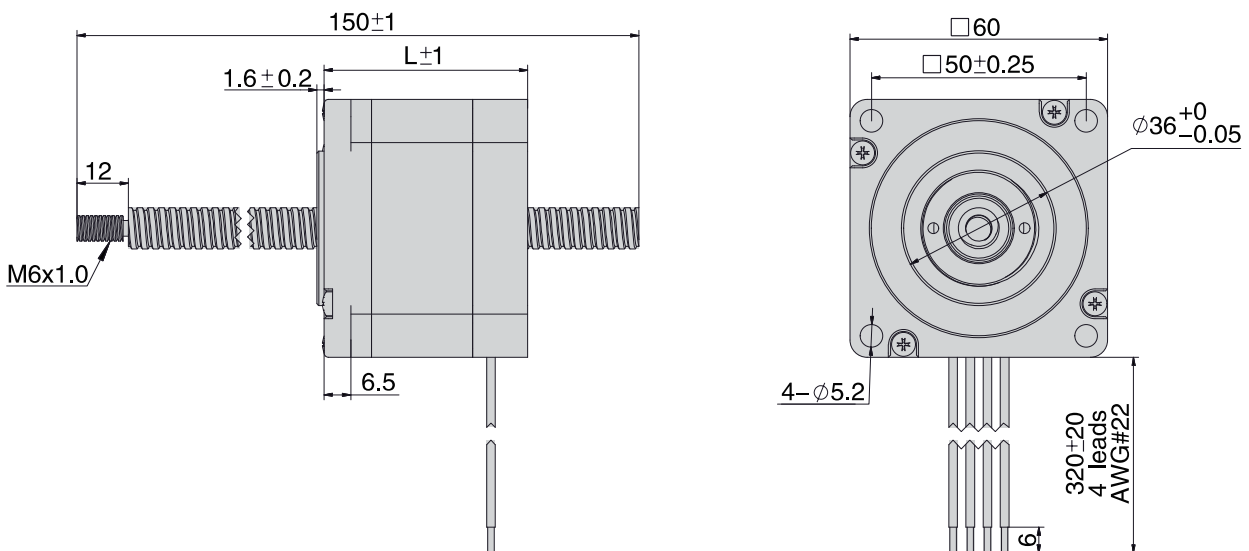
Typical Dimension

Non captive



Nut Dimension

External



2Phase Hybrid Stepper Motor

3Phase Hybrid Stepper Motor

5Phase Hybrid Stepper Motor

Hybrid Stepper Gear Motor

Lead Screw Linear Actuator

Ball Screw Linear Actuator

IP65 Stepper Motor

Hollow Shaft Stepper Motor

Stepper Motor With Brake

Pancake Stepper Motor

PM Stepper Motor

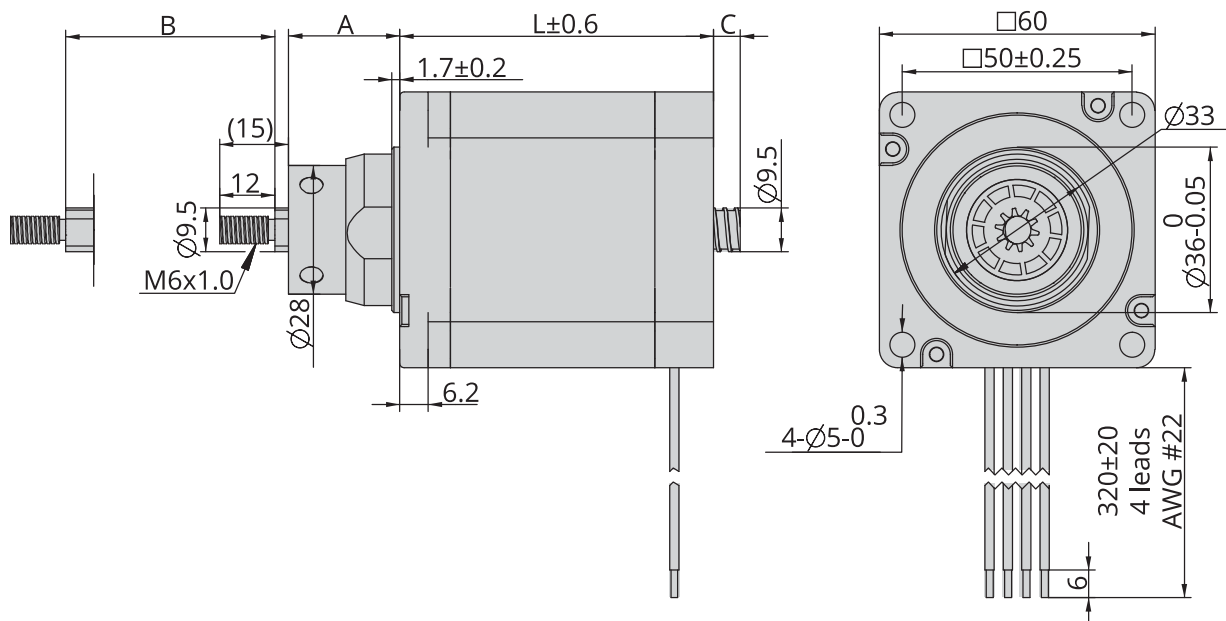
Can-Stack Stepper Linear Actuator

PM Stepper Gear Motor

Stepper Motor Drive

PHBL60 Series

captive

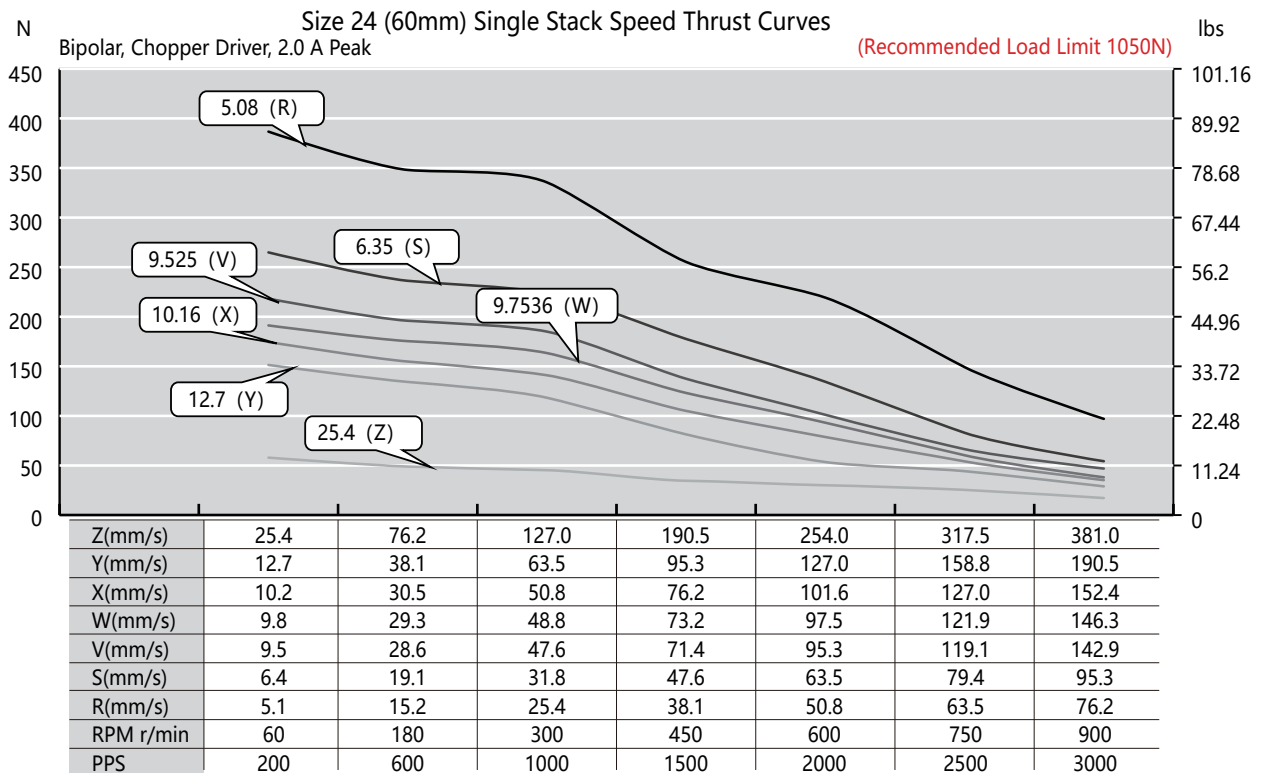
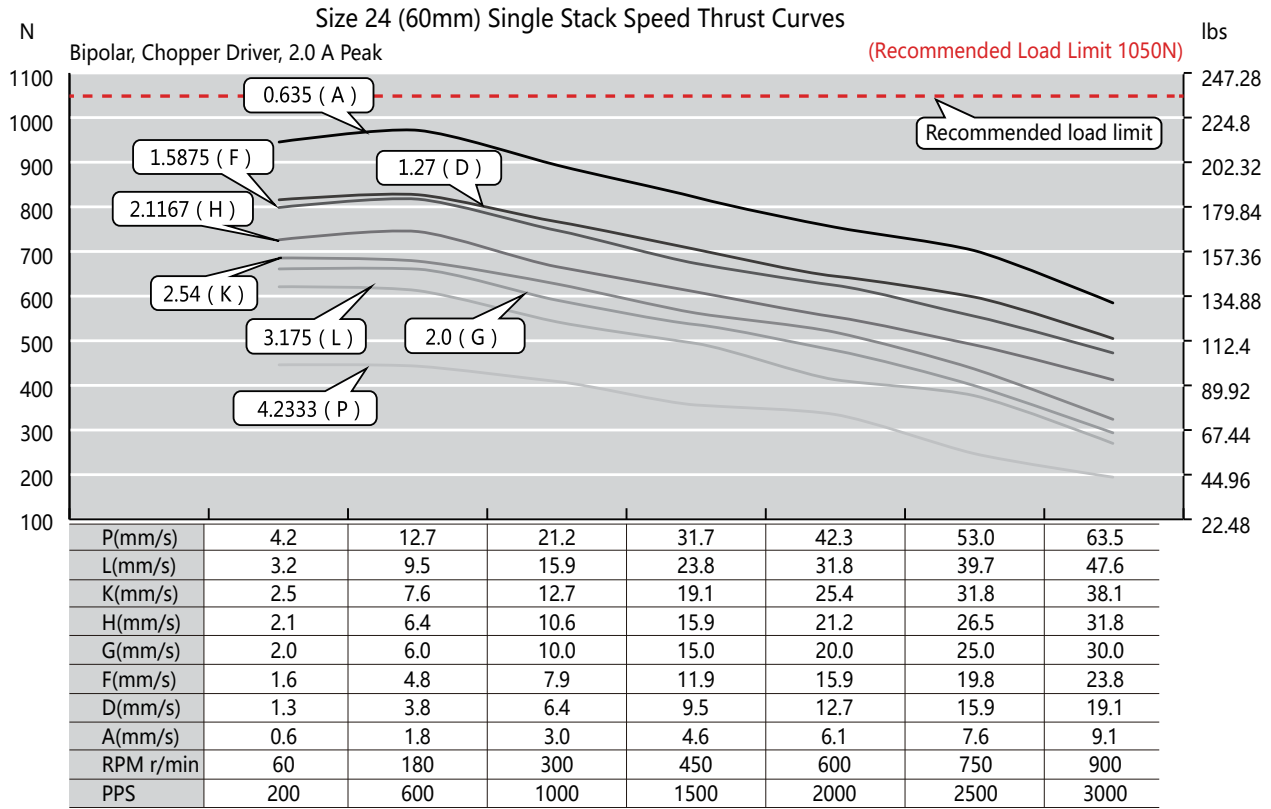


Stroke Specification

Stroke B (mm)	A (mm)	L (mm)	
		L=47	L=68.3
12.70	24.20	5.80	0.00
19.05	30.55	12.15	2.15
25.40	36.90	18.50	8.50
31.80	43.25	24.85	14.85
38.10	49.60	31.20	21.20
50.80	62.30	43.90	33.90
63.50	75.00	56.60	46.60

PHBL60 Series

Speed Thrust Curves



PRIMOPAL

- 2Phase Hybrid Stepper Motor
- 3Phase Hybrid Stepper Motor
- 5Phase Hybrid Stepper Motor
- Hybrid Stepper Gear Motor
- Lead Screw Linear Actuator
- Ball Screw Linear Actuator
- IP65 Stepper Motor
- Hollow Shaft Stepper Motor
- Stepper Motor With Brake
- Pancake Stepper Motor
- PM Stepper Motor
- Can-Stack Stepper Linear Actuator
- PM Stepper Gear Motor
- Stepper Motor Drive

PHBL60 Series

