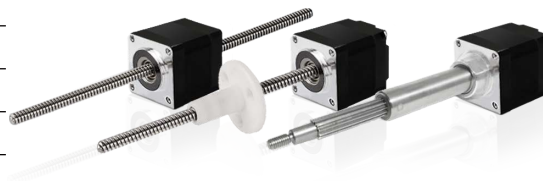


PHBL20 Series

Ambient Temperature	-20 °C ~ +50 °C
Temperature Rise	80 °C Max. (rated current, 2 phase on)
Dielectric Strength	500 VAC for one minute
Insulation Resistance	Class B (Class F also available)



Motor Specs

Model	Voltage		Current		Resistance		Inductance		Lead Wire		Motor Length	
	V/∅	A/∅	Ω/∅	mH/∅	Pin	inch	mm					
PHBL20□30-4S05	2.5	0.5	5.0	1.2	4	1.1811	27.2					
PHBL20□40-4S05	4.4	0.5	8.8	2.7	4	1.5748	38.1					

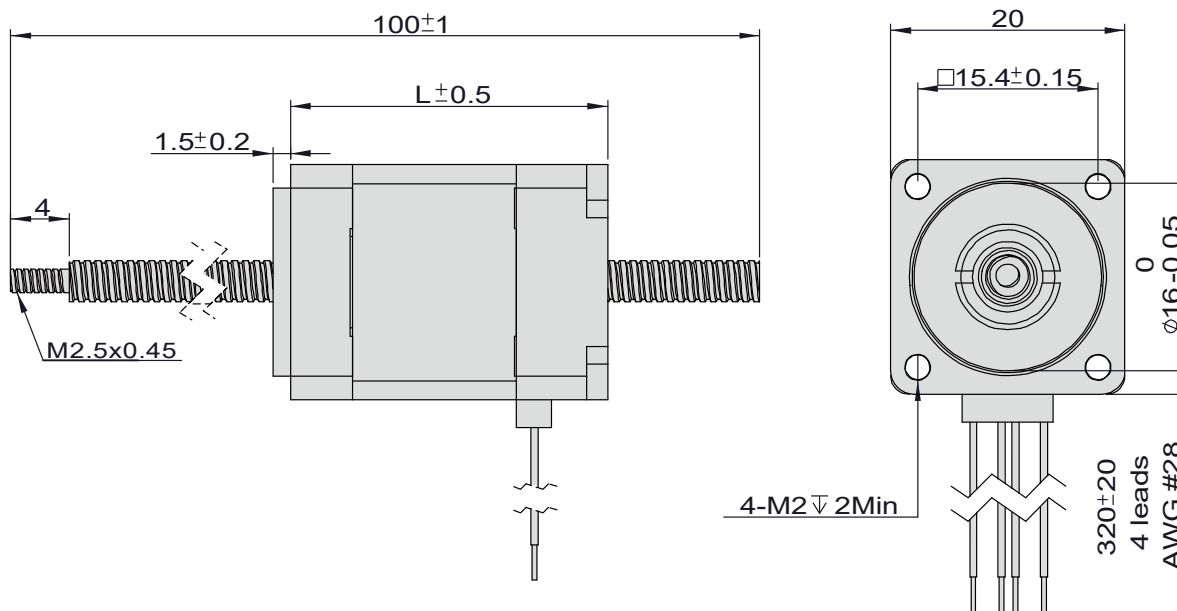
Note: Non-captive type (N) , External type (E) or captive(C)is available, and please specify it with the blank box when ordering.

Lead Screw Specs

Lead Code	Screw Dia.		Lead		Travel/Step	
	inch	mm	inch	mm	inch	mm
AF	0.138	3.5052	0.012	0.3048	0.00006	0.001524
AA	0.138	3.5052	0.024	0.6096	0.00012	0.003048
AB	0.138	3.5052	0.0394	1.0	0.00020	0.005
B	0.138	3.5052	0.048	1.2192	0.00024	0.006096
G	0.138	3.5052	0.079	2.0	0.000395	0.01
M	0.138	3.5052	0.158	4.0	0.00079	0.02
T	0.138	3.5052	0.315	8.0	0.001575	0.04

Typical Dimension

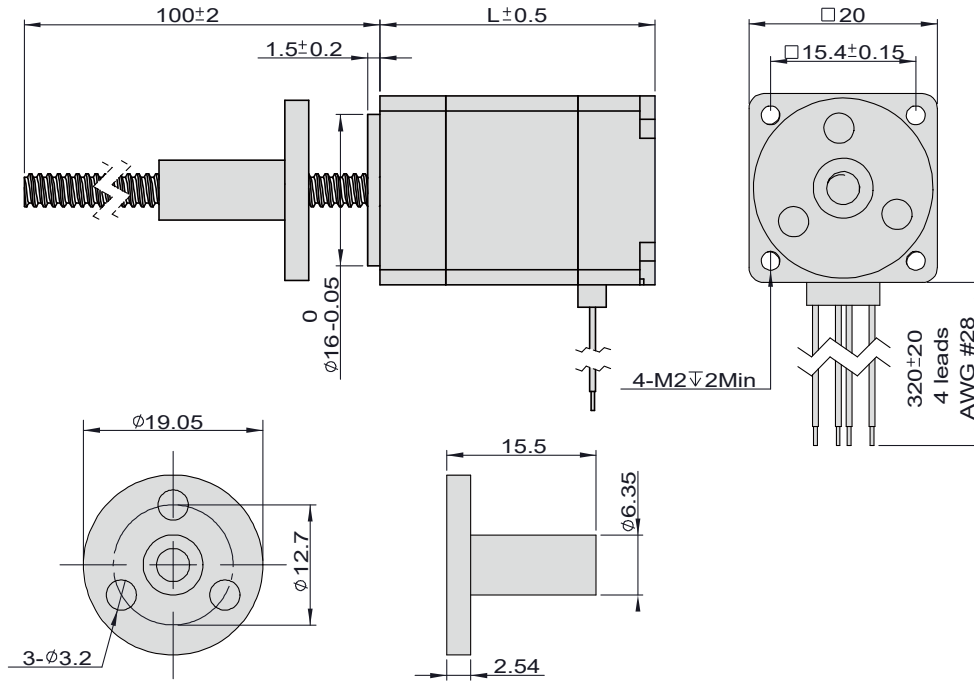
Non captive



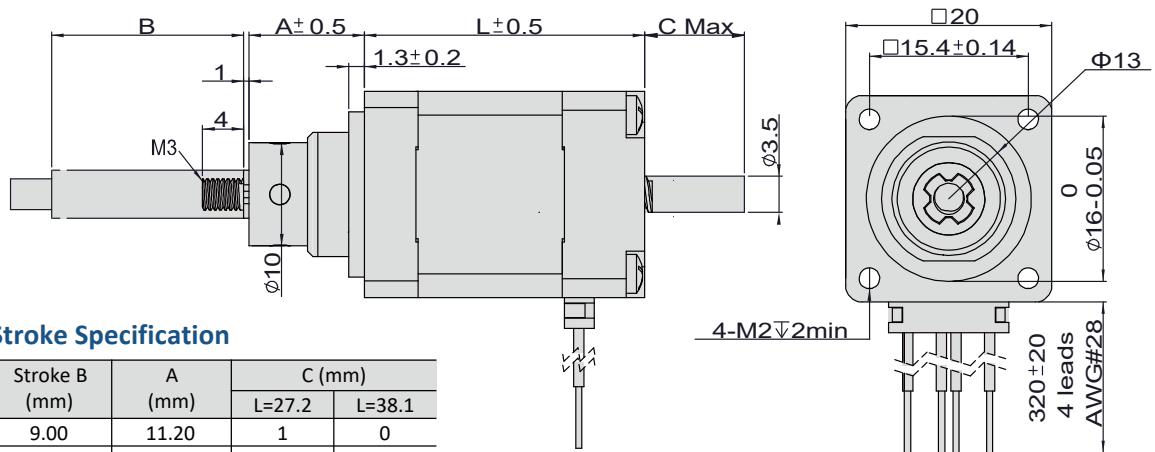
- 2Phase Hybrid Stepper Motor
- 3Phase Hybrid Stepper Motor
- 5Phase Hybrid Stepper Motor
- Hybrid Stepper Gear Motor
- Lead Screw Linear Actuator
- Ball Screw Linear Actuator
- IP65 Stepper Motor
- Hollow Shaft Stepper Motor
- Stepper Motor With Brake
- Pancake Stepper Motor
- PM Stepper Motor
- Can-Stack Stepper Linear Actuator
- PM Stepper Gear Motor
- Stepper Motor Drive

PHBL20 Series

External



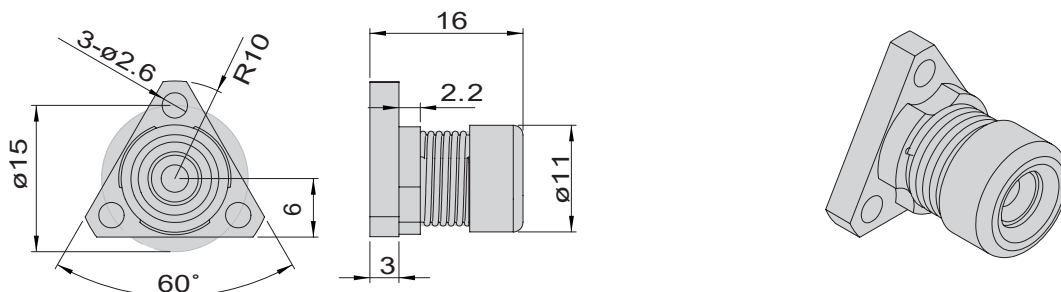
Captive



Stroke Specification

Stroke B (mm)	A (mm)	C (mm)	
		L=27.2	L=38.1
9.00	11.20	1	0
12.70	14.90	5	0
19.05	21.10	11	0
25.40	27.60	17	6
31.80	34.00	24	13
38.10	40.30	30	19

Anti-backlash Nut



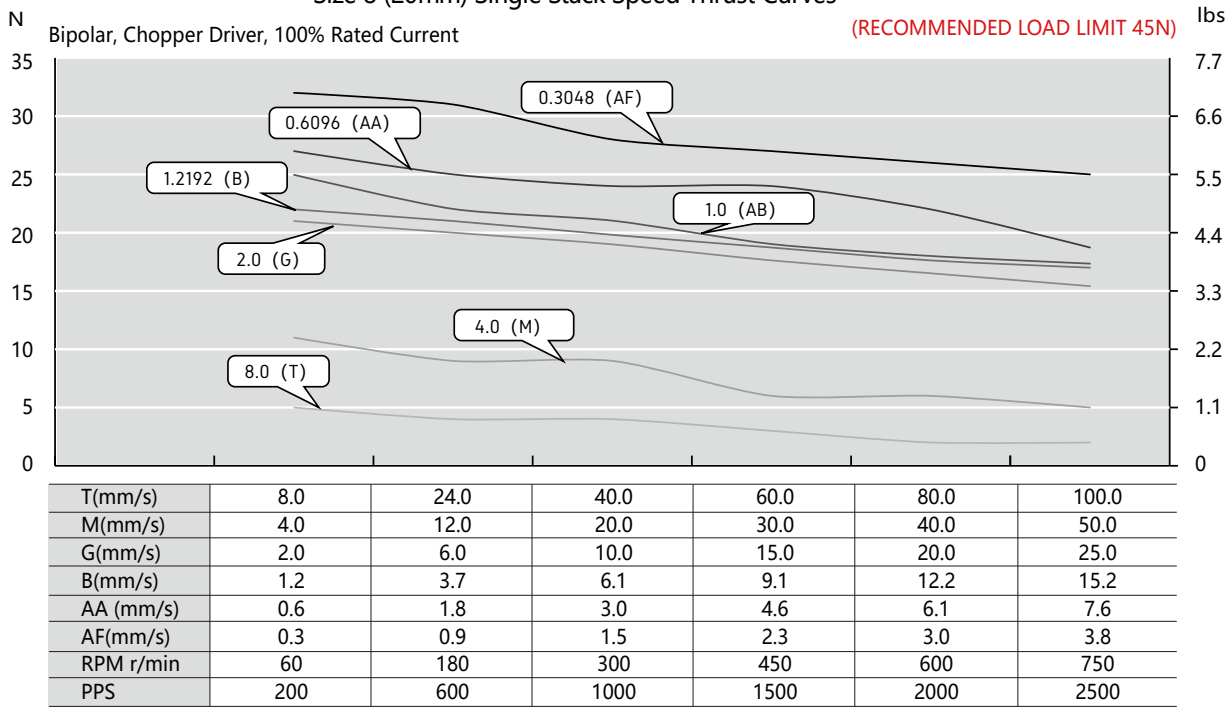
PHBL20 Series

Speed Thrust Curves



- 2Phase Hybrid Stepper Motor
- 3Phase Hybrid Stepper Motor
- 5Phase Hybrid Stepper Motor
- Hybrid Stepper Gear Motor
- Lead Screw Linear Actuator
- Ball Screw Linear Actuator
- IP65 Stepper Motor
- Hollow Shaft Stepper Motor
- Stepper Motor With Brake
- Pancake Stepper Motor
- PM Stepper Motor
- Can-Stack Stepper Linear Actuator
- PM Stepper Gear Motor
- Stepper Motor Drive

Size 8 (20mm) Single Stack Speed Thrust Curves



Size 8 (20mm) Double Stack Speed Thrust Curves

