

PHB86K Series

● **Key Features**

- High Acceleration
- Low Noise
- High Inertia

● **Option**



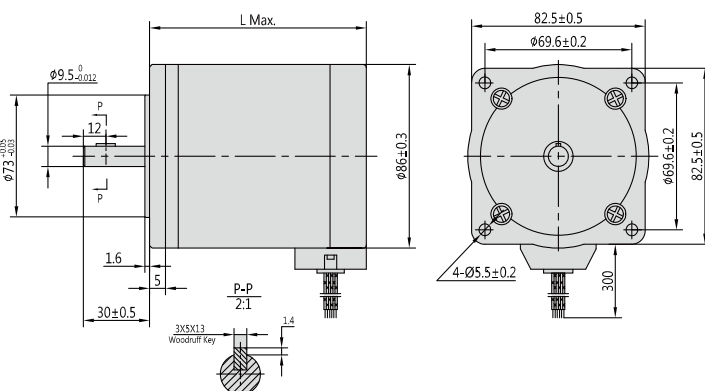
Step Angle	1.8°
Step Angle Accuracy	±5% (full step, no load)
Resistance Accuracy	±10%
Inductance Accuracy	±20%
Temperature Rise	80 °C Max. (rated current)
Ambient Temperature	-20 °C ~ +50 °C
Insulation Resistance	100 MΩ Min., 500VDC
Dielectric Strength	1500 VAC for one minute
Shaft Radial Play	0.02 Max. (450 g-load)
Shaft Axial Play	0.08 Max. (450 g-load)

● **Specifications**

- 8 wires

Model & Length	Model Number	Connection	Holding Torque		Rated Current	Resistance per phase	Inductance per phase	Detent Torque		Rotor Inertia	
			N.cm	oz-in				N.cm	oz-in	g.cm ²	oz-in ²
PHB86K63 63mm	PHB86K63-801	Bipolar-Parallel	250	350	3.0	0.95	7.2	4.5	6.3	640	3.520
		Bipolar-Series	250	350	1.5	3.8	28.8				
	PHB86K63-803	Bipolar-Parallel	250	350	5.6	0.34	2.0	4.5	6.3	640	3.520
		Bipolar-Series	250	350	2.8	1.36	8.0				
	PHB86K63-804	Bipolar-Parallel	250	350	7.0	0.23	1.5	4.5	6.3	640	3.520
		Bipolar-Series	250	350	3.5	0.9	6.0				
PHB86K92 92mm	PHB86K92-801	Bipolar-Parallel	450	630	3.0	1.4	15	6.5	9.1	1300	7.150
		Bipolar-Series	450	630	1.5	5.4	60				
	PHB86K92-803	Bipolar-Parallel	450	630	5.6	0.45	3.8	6.5	9.1	1300	7.150
		Bipolar-Series	450	630	2.8	1.8	15.2				
	PHB86K92-804	Bipolar-Parallel	450	630	7.0	0.3	2.8	6.5	9.1	1300	7.150
		Bipolar-Series	450	630	3.5	1.2	11.2				
PHB86K-122 122mm	PHB86K122-802	Bipolar-Parallel	630	882	3.8	1.25	12.5	10.5	14.7	1900	10.45
		Bipolar-Series	630	882	1.9	5.0	50				
	PHB86K122-803	Bipolar-Parallel	630	882	5.6	0.55	5.6	10.5	14.7	1900	10.45
		Bipolar-Series	630	882	2.8	2.2	22.4				
	PHB86K122-804	Bipolar-Parallel	630	882	7.0	0.4	3.6	10.5	14.7	1900	10.45
		Bipolar-Series	630	882	3.5	1.6	14.4				

● **Mechanical Dimension**



Series	L		Mass	
	mm (in.)	g (lb.)	g (lb.)	g (lb.)
PHB86K63	63 (2.48)	1600 (3.52)	1600 (3.52)	1600 (3.52)
PHB86K92	92 (3.62)	2600 (5.72)	2600 (5.72)	2600 (5.72)
PHB86K122	122 (4.80)	3800 (8.36)	3800 (8.36)	3800 (8.36)