

PHB60T Series

● Key Features

- High Accuracy
- High Inertia
- High Torque



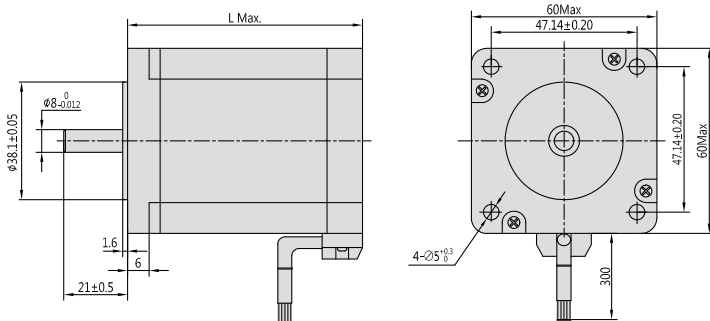
Step Angle	1.2°
Step Angle Accuracy	±5% (full step, no load)
Resistance Accuracy	±10%
Inductance Accuracy	±20%
Temperature Rise	80 °C Max. (rated current, 3 phase on)
Ambient Temperature	-20 °C ~ +50 °C
Insulation Resistance	100 MΩ Min., 500VDC
Dielectric Strength	500 VAC for one minute
Shaft Radial Play	0.02 Max. (450 g-load)
Shaft Axial Play	0.08 Max. (450 g-load)

● Specifications

- 3 Wires

Series & Length	Model Number	Holding Torque		Rated Current	Resistance per phase	Inductance per phase	Detent Torque		Rotor Inertia		# of Leads
		N.cm	oz-in				A	ohm	mH	N.cm	
PHB60T54 54mm	PHB60T54-335	80	112	3.5	0.8	1.8	3.5	4.9	280	1.540	3
	PHB60T54-346	80	112	4.6	0.5	0.8	3.5	4.9	280	1.540	3
PHB60T64 64mm	PHB60T64-335	110	154	3.5	1.0	2.5	5.0	7	380	2.090	3
	PHB60T64-346	110	154	4.6	0.7	1.2	5.0	7	380	2.090	3
PHB60T76 76mm	PHB60T76-335	130	182	3.5	1.2	3.2	6.5	9.1	440	2.420	3
	PHB60T76-346	130	182	4.6	0.8	1.5	6.5	9.1	440	2.420	3
PHB60T90 90mm	PHB60T90-335	160	224	3.5	1.5	4.5	8.0	11.2	580	3.190	3
	PHB60T90-346	160	224	4.6	1.0	2.5	8.0	11.2	580	3.190	3

● Mechanical Dimension



Series	L	Mass
	mm (in.)	g (lb.)
PHB60T54	54 (2.13)	280 (0.62)
PHB60T64	64 (2.52)	380 (0.84)
PHB60T76	76 (2.99)	440 (0.97)
PHB60T90	90 (3.54)	580 (1.28)

2Phase Hybrid Stepper Motor

3Phase Hybrid Stepper Motor

5Phase Hybrid Stepper Motor

Hybrid Stepper Gear Motor

Lead Screw Linear Actuator

Ball Screw Linear Actuator

IP65 Stepper Motor

Hollow Shaft Stepper Motor

Stepper Motor With Brake

Pancake Stepper Motor

PM Stepper Motor

Can-Stack Stepper Linear Actuator

PM Stepper Gear Motor

Stepper Motor Drive