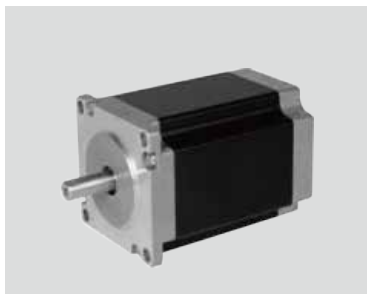


**PHB57T Series**

● **Key Features**

- High Torque
- Smooth Movement
- High Speed



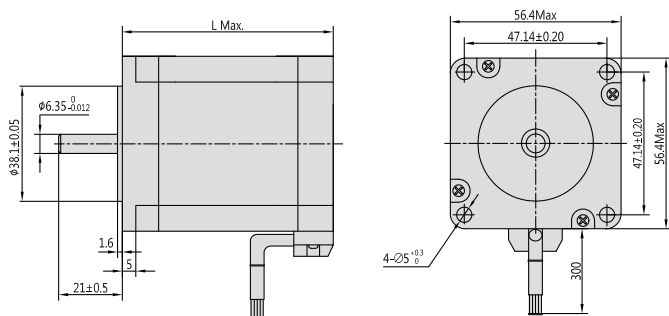
Step Angle	1.2°
Step Angle Accuracy	±5% (full step, no load)
Resistance Accuracy	±10%
Inductance Accuracy	±20%
Temperature Rise	80 °C Max.(rated current, 3 phase on)
Ambient Temperature	-20 °C ~ +50 °C
Insulation Resistance	100 MΩ Min., 500VDC
Dielectric Strength	500 VAC for one minute
Shaft Radial Play	0.02 Max. (450 g-load)
Shaft Axial Play	0.08 Max. (450 g-load)

● **Specifications**

- 6 Wires

Series & Length	Model Number	Holding Torque		Rated Current	Resistance per phase	Inductance per phase	Detent Torque		Rotor Inertia		# of Leads
		N.cm	oz-in	A	ohm	mH	N.cm	oz-in	g.cm <sup>2</sup>	oz-in <sup>2</sup>	Pin
PHB57T56 56mm	PHB57T56-607	80	112	4.6	0.7	1.7	4.0	5.6	300	1.65	6
PHB57T78 78mm	PHB57T78-608	150	210	5.2	0.8	1.8	7.0	9.8	440	2.42	6
PHB57T80 80mm	PHB57T80-620	160	224	3.1	0.65	2.0	8.0	11.2	480	2.64	6

● **Mechanical Dimension**



Series	L	Mass
	mm (in.)	g (lb.)
PHB57T56	56 (2.20)	700 (1.54)
PHB57T78	78 (3.08)	1050 (2.31)
PHB57T80	80 (3.15)	1100 (2.43)