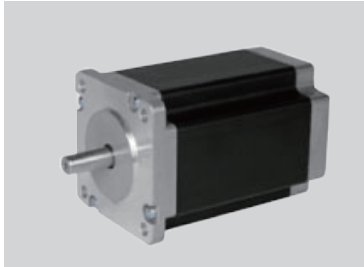


PHB60S Series

● Key Features

- High Torque
- Smooth Movement
- High Inertia

● Option



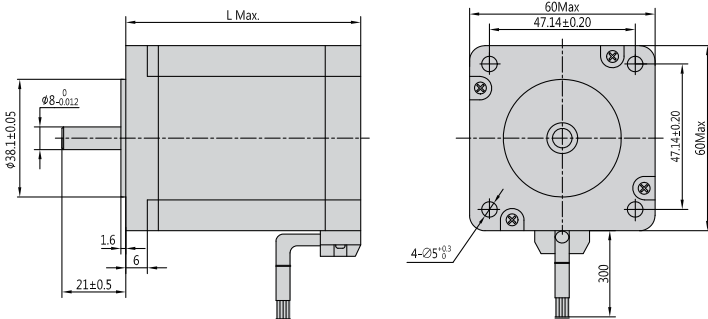
Step Angle	1.8°
Step Angle Accuracy	±5% (full step, no load)
Resistance Accuracy	±10%
Inductance Accuracy	±20%
Temperature Rise	80 °C Max.(rated current, 2 phase on)
Ambient Temperature	-20 °C ~ +50 °C
Insulation Resistance	100 MΩ Min., 500VDC
Dielectric Strength	500 VAC for one minute
Shaft Radial Play	0.02 Max. (450 g-load)
Shaft Axial Play	0.08 Max. (450 g-load)

● Specifications

- Bi-polar

Series & Length	Model Number	Holding Torque		Rated Current	Resistance per phase	Inductance per phase	Detent Torque		Rotor Inertia	
		N.cm	oz-in				N.cm	oz-in	g.cm ²	oz-in ²
PHB60S41 41mm	PHB60S41-420	64	89.6	2.0	1.2	2.5	3.0	4.2	180	0.990
PHB60S45 45mm	PHB60S45-425	85	119	2.5	1.0	2.2	3.5	4.9	200	1.100
PHB60S51 51mm	PHB60S51-425	140	196	2.5	1.2	3.2	4.0	5.6	250	1.375
PHB60S56 56mm	PHB60S56-430	160	224	3.0	0.8	2.4	4.0	5.6	350	1.925
	PHB60S56-404	160	224	4.2	0.4	1.2	4.0	5.6	350	1.925
PHB60S64 64mm	PHB60S64-430	180	252	3.0	0.8	2.3	5.0	7	450	2.475
	PHB60S64-404	180	252	4.2	0.55	1.2	5.0	7	450	2.475
PHB60S76 76mm	PHB60S76-430	220	308	3.0	1.0	3.5	7.0	9.8	550	3.025
	PHB60S76-404	220	308	4.2	0.6	1.8	7.0	9.8	550	3.025
PHB60S90 90mm	PHB60S90-430	260	364	3.0	1.4	5.5	12.0	16.8	780	4.290
	PHB60S90-404	260	364	4.2	0.8	3.0	12.0	16.8	780	4.290

● Mechanical Dimension



Series	L		Mass	
	mm	(in.)		g
PHB60S41	41	(1.61)	500	(1.10)
PHB60S45	45	(1.77)	550	(1.21)
PHB60S51	51	(2.01)	600	(1.32)
PHB60S56	56	(2.20)	700	(1.54)
PHB60S64	64	(2.52)	950	(2.09)
PHB60S76	76	(2.99)	1150	(2.53)
PHB60S90	90	(3.54)	1400	(3.08)

2Phase Hybrid Stepper Motor

3Phase Hybrid Stepper Motor

5Phase Hybrid Stepper Motor

Hybrid Stepper Gear Motor

Lead Screw Linear Actuator

Ball Screw Linear Actuator

IP65 Stepper Motor

Hollow Shaft Stepper Motor

Stepper Motor Wrth Brake

Pancake Stepper Motor

PM Stepper Motor

Can-Stack Stepper Linear Actuator

PM Stepper Gear Motor

Stepper Motor Drive