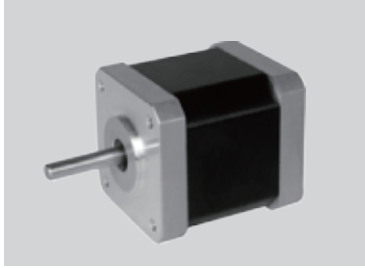


PHB42S Series

● Key Features ● Option

- High accuracy
- High Torque
- Low Inertia



Step Angle	1.8°
Step Angle Accuracy	±5% (full step, no load)
Resistance Accuracy	±10%
Inductance Accuracy	±20%
Temperature Rise	80 °C Max.(rated current, 2 phase on)
Ambient Temperature	-20 °C ~ +50 °C
Insulation Resistance	100 MΩ Min., 500VDC
Dielectric Strength	500 VAC for one minute
Shaft Radial Play	0.02 Max. (450 g-load)
Shaft Axial Play	0.08 Max. (450 g-load)

● Specifications

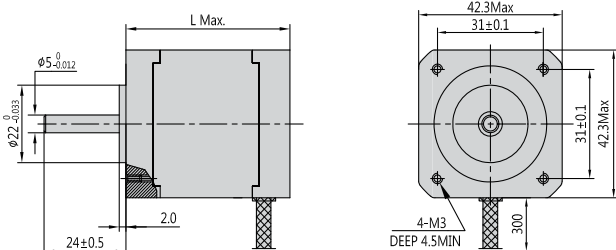
- Bi-polar

Series & Length	Model Number	Holding Torque		Rated Current	Resistance per phase	Inductance per phase	Detent Torque		Rotor Inertia	
		N.cm	oz-in				A	ohm	mH	N.cm
PHB42S20 20mm	PHB42S20-410	10	14	0.8	3.8	4.5	1.0	1.4	24	0.132
PHB42S28 28mm	PHB42S28-406	12	16.8	0.6	8.0	10	1.2	1.68	30	0.165
PHB42S34 34mm	PHB42S34-401	28	39.2	1.3	2.4	2.8	1.6	2.24	34	0.187
	PHB42S34-432	28	39.2	1.7	1.2	1.8	1.6	2.24	34	0.187
	PHB42S34-430	28	39.2	0.4	30	35	1.6	2.24	34	0.187
PHB42S40 40mm	PHB42S40-401	40	56	1.3	2.5	5.0	2.2	3.08	54	0.297
	PHB42S40-402	40	56	1.7	1.5	2.8	2.2	3.08	54	0.297
PHB42S48 48mm	PHB42S48-401	52	72.8	1.3	3.2	5.5	2.6	3.64	68	0.374
	PHB42S48-402	52	72.8	1.7	1.8	3.2	2.6	3.64	68	0.374
	PHB42S48-403	52	72.8	2.3	1.2	1.6	2.6	3.64	68	0.374
PHB42S60 60mm	PHB42S60-403	70	98	2.3	1.4	2.5	3.6	5.04	80	0.440
PHB42S63 63mm	PHB42S63-403	80	112	2.3	1.5	2.2	4.0	5.6	85	0.468

- Uni-polar

Series & Length	Model Number	Holding Torque		Rated Current	Resistance per phase	Inductance per phase	Detent Torque		Rotor Inertia	
		N.cm	oz-in				A	ohm	mH	N.cm
PHB42S34 34mm	PHB42S34-630	21	29.4	0.4	30	18	1.6	2.24	34	0.187
PHB42S40 40mm	PHB42S40-601	28	39.2	1.2	3.2	2.8	2.2	3.08	54	0.297
	PHB42S40-630	28	39.2	0.4	30	28	2.2	3.08	54	0.297
PHB42S48 48mm	PHB42S48-630	34	47.6	0.4	30	38	2.6	3.64	68	0.374

● Mechanical Dimension



Series	L	Mass
	mm (in.)	g (lb.)
PHB42S20	20 (0.79)	120 (0.26)
PHB42S28	28 (1.10)	150 (0.33)
PHB42S34	34 (1.34)	220 (0.49)
PHB42S40	40 (1.57)	280 (0.62)
PHB42S48	48 (1.89)	350 (0.77)
PHB42S60	60 (2.36)	480 (1.06)
PHB42S63	63 (2.48)	500 (1.10)

2Phase Hybrid Stepper Motor

3Phase Hybrid Stepper Motor

5Phase Hybrid Stepper Motor

Hybrid Stepper Gear Motor

Lead Screw Linear Actuator

Ball Screw Linear Actuator

IP65 Stepper Motor

Hollow Shaft Stepper Motor

Stepper Motor Wrth Brake

Pancake Stepper Motor

PM Stepper Motor

Can-Stack Stepper Linear Actuator

PM Stepper Gear Motor

Stepper Motor Drive