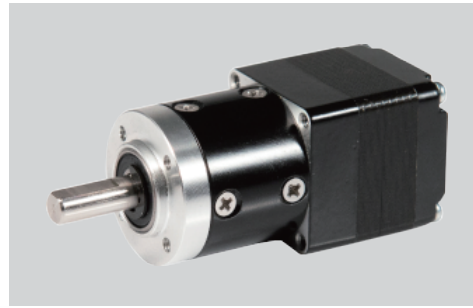


PHG28Y Series

● Key Features

- Small Size
- Long Life
- High Precision



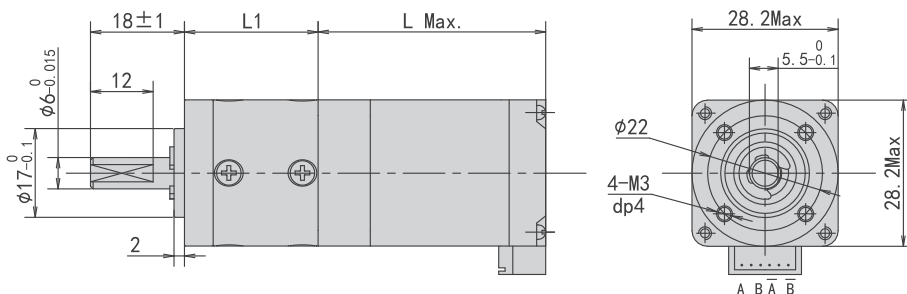
● Stepper Motor Electrical Specifications

Series Model	Rated Current (A)	Phase Resistance (Ω)	Phase Inductance (mH)	Lead Wire (No.)	Holding Torque (N.cm)	Motor Length L (mm)	Rotor Inertia (g.cm ²)	Motor Weight (g)	Step Angle (°)
PHG28Y28-401	0.6	4.2	2.2	4	4.5	31	6	105	1.8
PHG28Y33-401		5.5	3.2		6.0	36	8	110	
PHG28Y41-401		7.0	6.0		8.0	44	11	140	
PHG28Y50-401		9.0	7.2		10.0	53	13	180	

● Planetary Gearbox Technical Data

Gear Ratio		Length (mm)	Efficiency	Rated Torque (N.m)	Permissible Torque (Max) (N.m)	Noise (dB)	Backlash min. at No-load	Weight (g)
1 Stage	3.71	25.6	90%	0.3	1.0	@1m ≤60dB	≤60arcmin	48
	5.18							
	6.75							
2 Stage	14	34	81%	1.2	3.5			55
	19							
	27							
	35							
	46							
3 Stage	51	42	73%	2.5	7.5			64
	71							
	100							
	139							
	181							
	236							
307								

● Dimensions(Unit:mm)



2Phase Hybrid Stepper Motor

3Phase Hybrid Stepper Motor

5Phase Hybrid Stepper Motor

Hybrid Stepper Gear Motor

Lead Screw Linear Actuator

Ball Screw Linear Actuator

IP65 Stepper Motor

Hollow Shaft Stepper Motor

Stepper Motor Wrth Brake

Pancake Stepper Motor

PM Stepper Motor

Can-Stack Stepper Linear Actuator

PM Stepper Gear Motor

Stepper Motor Drive