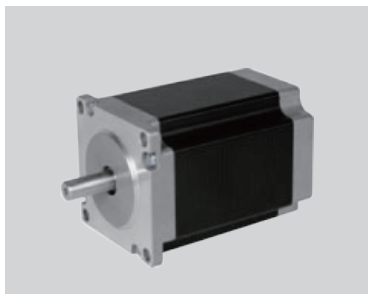


PHB57T Series

● **Key Features**

- High Torque
- Smooth Movement
- High Speed



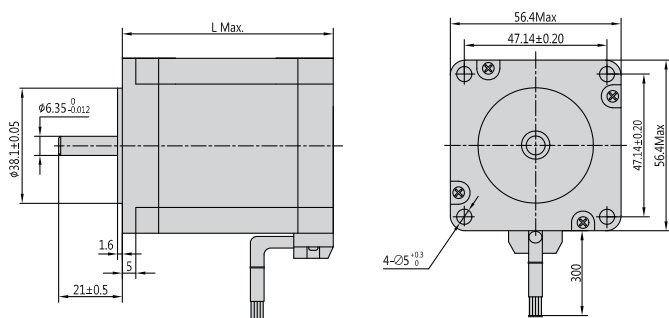
| | |
|-----------------------|---------------------------------------|
| Step Angle | 1.2° |
| Step Angle Accuracy | ±5% (full step, no load) |
| Resistance Accuracy | ±10% |
| Inductance Accuracy | ±20% |
| Temperature Rise | 80 °C Max.(rated current, 3 phase on) |
| Ambient Temperature | -20 °C ~ +50 °C |
| Insulation Resistance | 100 MΩ Min., 500VDC |
| Dielectric Strength | 500 VAC for one minute |
| Shaft Radial Play | 0.02 Max. (450 g-load) |
| Shaft Axial Play | 0.08 Max. (450 g-load) |

● **Specifications**

- 6 Wires

| Series & Length | Model Number | Holding Torque | | Rated Current | Resistance per phase | Inductance per phase | Detent Torque | | Rotor Inertia | | # of Leads |
|------------------|--------------|----------------|-------|---------------|----------------------|----------------------|---------------|-------|-------------------|--------------------|------------|
| | | N.cm | oz-in | | | | N.cm | oz-in | g.cm ² | oz-in ² | |
| PHB57T56 56mm | PHB57T56-607 | 80 | 112 | 4.6 | 0.7 | 1.7 | 4.0 | 5.6 | 300 | 1.65 | 6 |
| PHB57T78 78mm | PHB57T78-608 | 150 | 210 | 5.2 | 0.8 | 1.8 | 7.0 | 9.8 | 440 | 2.42 | 6 |
| PHB57T80 80mm | PHB57T80-620 | 160 | 224 | 3.1 | 0.65 | 2.0 | 8.0 | 11.2 | 480 | 2.64 | 6 |

● **Mechanical Dimension**



| Series | L | Mass |
|----------|-----------|-------------|
| | mm (in.) | g (lb.) |
| PHB57T56 | 56 (2.20) | 700 (1.54) |
| PHB57T78 | 78 (3.08) | 1050 (2.31) |
| PHB57T80 | 80 (3.15) | 1100 (2.43) |