

SHTOPVIEW



**Optical instrument
Ophthalmic instrument
Optometry instrument
Medical device
Tools**





Fiscal Year 2020 CERTIFICATION OF REGISTRATION

This certifies that:

Shanghai Top View Industrial Co., Ltd
No.3388 GongHeXin Road,JingAn,shanghai,CHINA

has completed the FDA Establishment Registration (as manufacturer , foreign exporter, contract manufacturer) and Device Listing with the US Food & Drug Administration, through

U.S. Agent for FDA SUNGO TECHNICAL SERVICE INC.
Communications: 6050 W EASTWOOD AVE APT 201, CHICAGO,
 ILLINOIS 60630, USA
 Telephone: +1-855-957-7779 / E-mail: sungo.group@yahoo.com

Registration Number:3012707847
Device Listing#: See annex

SUNGO Technical Service Inc. will confirm that such registration remains effective upon request and presentation of this certificate until the end of the calendar year stated above, unless said registration is terminated after issuance of this certificate. SUNGO Technical Service Inc. makes no other representations or warranties, nor does this certificate make any representations or warranties to any person or entity other than the named certificate holder, for whose sole benefit it is issued. This certificate does not denote endorsement or approval of the certificate-holder's device or establishment by the U.S. Food and Drug Administration. SUNGO Technical Service Inc. assumes no liability to any person or entity in connection with the foregoing.

Pursuant to 21 CFR 807.39, "Registration of a device establishment or assignment of a registration number does not in any way denote approval of the establishment or its products. Any representation that creates an impression of official approval because of registration or possession of a registration number is misleading and constitutes misbranding." The U.S. Food and Drug Administration does not issue a certificate of registration, nor does the U.S. Food and Drug Administration recognize a certificate of registration, SUNGO Technical Service Inc. is not affiliated with the U.S. Food and Drug Administration.



Executive Director
Issued: Dec. 27 2019
Cert. No.: 2006US842528
Expiration Date: Dec. 31 2020



Fiscal Year 2020 CERTIFICATION OF REGISTRATION

Annex to Cert. No.: 2006US842528

Listing No	Code	Device Name
D345115	HKO	Refractometer, ophthalmic (TPV800 handheld refractor; TPV series auto refractometer)
D345116	HKN	Refractor, manual, non-powered, including phoropter (phoropter)
D345117	HKZ	Sterilizer, tonometer (TPV500 TONOMETER)
D345118	PJZ	Camera, ophthalmic, general-use (Hand-held Fundus Camera; TPV series Digital Fundus Camera)
D345119	PUE	Biomicroscope, slit-lamp, AC-powered, exempt (TPV series slit lamp)
D345120	HRJ	Table, instrument, powered, ophthalmic (Ophthalmic unit)
D345121	HLM	Instrument, measuring, lens, ac-powered (TPV series lens meter)
D345122	HPA	Frame, trial, ophthalmic (trial frame)
D345123	HPC	Set, lens, trial, ophthalmic (trial lens set)
D345124	HOX	Chart, visual acuity (visual charter)
D345125	HPT	Perimeter, automatic, ac-powered (PERIMETER)
D345341	HOS	Projector, ophthalmic (PROJECTOR charter)
D345342	HLH	Pupillometer, manual (PUPILLOMETER)
D345343	HRM	MICROSCOPE, OPERATING & ACCESSORIES, AC-POWERED, OPHTHALMIC (OPERATING MICROSCOPE)
D345344	KZA	DEVICE, VEIN LOCATION, LIQUID CRYSTAL (vein finder)
D366893	HLJ	Ophthalmoscope, battery-powered (OPHTHALMOSCOPE RETINOSCOPE)
D366894	MDM	INSTRUMENT, MANUAL, SURGICAL, GENERAL USE (OPHTHALMIC SURGICAL INSTRUMENT)
D366895	MMQ	Topographer, corneal, ac-powered (CORNEALTOPOGRAPHER)

END OF THE ANNEX

AR(K)7680

Auto Refrac(Kera)tometer

The most cost-effective
Hartmann refrac(kera)tometer in the world



AR(K)7680

Auto Refrac(Kera)tometer

The most cost-effective
Hartmann refrac(kera)tometer in the world

Adjustable LCD Touch Screen



High brightness and contrast 7" wide color TFT LCD screen, smooth touch mode, different angle can be adjusted

Motorized Chin Rest



By pressing the Up & Down buttons, the users can set and adjust the height of the patient's chin freely and quickly

Data Record

DATA RECORD							
R	SPH	CYL	AX	L	SPH	CYL	AX
1	-0.50	-1.50	95	1	-0.50	-1.25	99
2	-0.50	-1.50	95	2	-0.50	-1.25	99
3	-0.50	-1.50	95	3	-0.50	-1.25	99
4				4			
5				5			
6				6			
7				7			
8				8			
9				9			
10				10			
AVG	-0.50	-1.50	95	AVG	-0.50	-1.25	99

3 groups of data stored each measurement, maximum 10 groups of data can be stored

Operation interface function

R S C A R1 R2 AX
 1.72
 3.63
 55
 50
L S C A R1 R2 AX
 27

STEP.25 CYL(-) VD:12.0

R/K A MF Clear Data Record Menu Set Printing

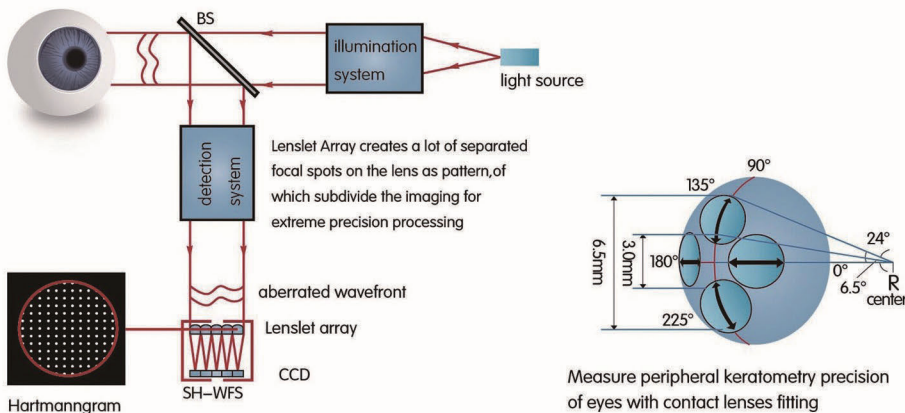
KER Keratometry **Manual Measuring** **Manual focusing**
REF Refractometry **Auto Measuring**
R/K Refrackeratometry

Intuitive icons provide the user an easier operating circumstances, and make the measurement become more convenient and the data to be measured more accurate and fast

Professional Design



Hartmann imaging processing technology



3D Full Automated

FKR-710 | Auto keratometer

- R/L fully automated measurement
- Easy-to-Use Color Touchscreen Control Panel
- Flexible and Space Saving Layout
- The adjustable control panel can be positioned in any direction
- Reliable Measurement
- Print and Auto-Cut Data Paper



PARAMETERS AND PERFORMANCE

Configuration	Specification	
Measurementmode (only FKR-710)	K&R mode:	Diopter and corneal curvature measurements
	REF mode:	Diopter measurement
	KRT mode:	Corneal curvature measurement
	CLBC mode:	Contact lens curvature
Diopter measurement	Vertex distance (VD)	0mm、 12.0mm、 13.75mm、 15.00mm
	Spherical refractive power	-25.00D ~ + 20.00D
	Cylindrical refractive power	0D ~ 8D
	Direction of astigmaticaxis	0° ~ 180°
	PD measurement	45mm ~ 85mm
	Minimum pupil diameter	φ2.0mm
Corneal measurement	Cornea curvature radius	5.5mm ~ 10mm
	Direction of corneal astigmatic axis	0° ~ 180°
	Corneal diameter	2.0mm ~ 12.0mm
Product specifications	Monitor	9 " Touch LCD monitor
	printer	Imported Thermal Printer
	Saving mode	1/5/10/20/40 minutes automatic screensaver
	Power supply	AC110V ~ 230V; 60/50HZ 75VA
	Dimensions/Weight	300(W)*450(D)*500-530(H)mm/20Kg

Technical data

Operation mode: Bino/Mono
Optometry: Automatic
DS: Range: -7.50D~+7.50D
 Resolution: 0.25D/0.01D
 Accuracy: $\pm 0.50D$
DC: Range: 0.00D~3.00D
 Resolution: 0.25D/0.01D
 Accuracy: $\pm 0.50D$
Axis: Range: $1^\circ \sim 180^\circ$
 Resolution: 1°
 Accuracy: $\pm 5^\circ$
Pupil size: Range: 4.0 mm~9.0 mm
 Resolution: 0.1mm Accuracy: ± 0.1 mm
Pupil distance: Range: 35 mm~80 mm
 Resolution: 1mm Accuracy: ± 1 mm
Gaze: $0^\circ \sim 20^\circ$
Measuring distance: 1 m \pm 5 cm
Time per measurement: ~1s
Fixation target: Light flash, attractive sound
Data interface: Wi-Fi, USB
Printer interface: USB
Battery: Rechargeable lithium batteries, 6 hours of duration, Replaceable
Size: 180mm \times 130 mm \times 110mm
Display: 5 inch touch screen
Weight: 0.8Kg
Optional accessories: Camera tripods, printer, etc



TPV-800

Vision screener



FKR-8900 | Auto Refractor



1. Combine measurement to diopter and corneal curvature
2. The precedent optical technique, consistent measurement and accurate figure.
3. the most advanced technique of a graph edit make the graph measured quickly and clear
4. humanized focusing Design to make grasp focus more quickly

FKR-8900 AUTO REFRACTOR

MEASUREMENT MODE	K/R	Measure diopter and corneal curvature
	REF	
KER		Measure corneal curvature
CLBC		Measure BC curvature of contact lens
Diopter measurement	Vertical distance	0mm, 12.0mm, 13.75mm, 15mm
	Sphere	(-25.00~+22.00)D(0.12/0.25Dsteps) (VD=12mm)
	Axis	$1^\circ \sim 180^\circ$ (steps 1°)
	Pupil distance	45 ~ 85mm(accuracy 0.5mm)
	Minimum pupil diameter	$\Phi 2.0$ mm
Corneal measurement	Charter	Automatic fogging method
	Corneal curvature radius	5 ~ 10mm(0.1mm steps)
	Corneal diopter	(33.00 ~ 67.00)D(0.12/0.25D steps)
	Corneal Astigmatism	(0.00 ~ -15.00)D(0.12/0.25D steps)
	Axis	$1^\circ \sim 180^\circ$ (steps 1°)
Product specification	Corneal diameter	2.0 ~ 12.00mm
	Display	5.7" TFT color LCD screen
	Printer	Imported thermal printer
	Energy save	Auto monitor energy save(5/10/30/60 mins)
	Power supply	AC110V~240V, 50/60HZ
Dimension/Weight	275(W)*475(D)*435-465(H)mm/18kg	

- Fast printing
- Easy replacement of printer paper
- All required functions are set on the operation panel.
- All settings are easy and simple.
- The control bar is flexible, so that the user can find the focusing dot accurately.

TCS-880 Ophthalmic Unit



KR9600 Refractometer



Specification

Measurement mode	K/R	Refraction / Keratometry measurement
	REF	Refraction measurement
	KER	Keratometry measurement
Refraction measurement	Vertex Distance	0.0, 12.0, 13.75, 15.0mm
	Sphere	-25.00~+22.00D (0.12/0.25D step) (VD=12mm)
	Cylinder	0.00~±10.00D (0.12/0.25 step)
	Axis	0 ~ 180° (1° step)
	Pupil Distance	10~85mm
	Minimum measurable pupil diameter	ø2.0 mm
	Target	Automatic fogging target
Keratometry Measurement (KR-9600)	Curvature radius	5~ 10mm (0.01mm step)
	Refractive power	33.75D~ 67.50D (0.12/0.25D step)
	Cylindrical power	0.00~15.00D (0.12/0.25D step)
	Axis	0 ~ 180° (1° step)
	Corneal diameter	2.0~12.00mm
Hardware specification	Monitor	7.0 inch Color LCD
	Printer	Thermal printer with easy loading and auto cutter
	Power saving	5/15 minutes
	Data output	RS232/ Bluetooth
	Power supply	AC100~240V, 50/60 HZ, 50W
	Dimensions/Weight	262(W)*487(D)*467(H)mm/ 17.5kg

CV-7600 Digital Phoropter

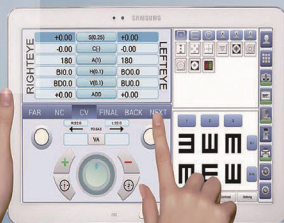


BLUETOOTH WIRELESS CONTROLLED Computerized vision tester

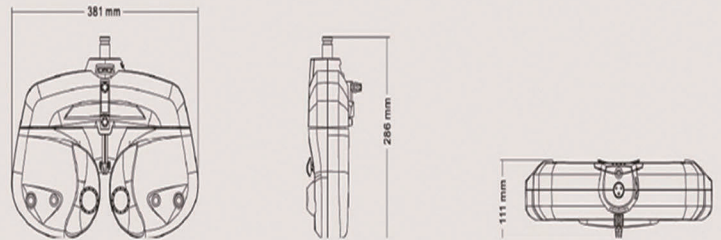
Bluetooth wireless communication, provide freedom of movement

Simple operation interface, integrate abundant information

Support data transmission with external devices such as Auto refractometer/Chart Monitor etc.



Dimensions of CV head (mm)



Specifications

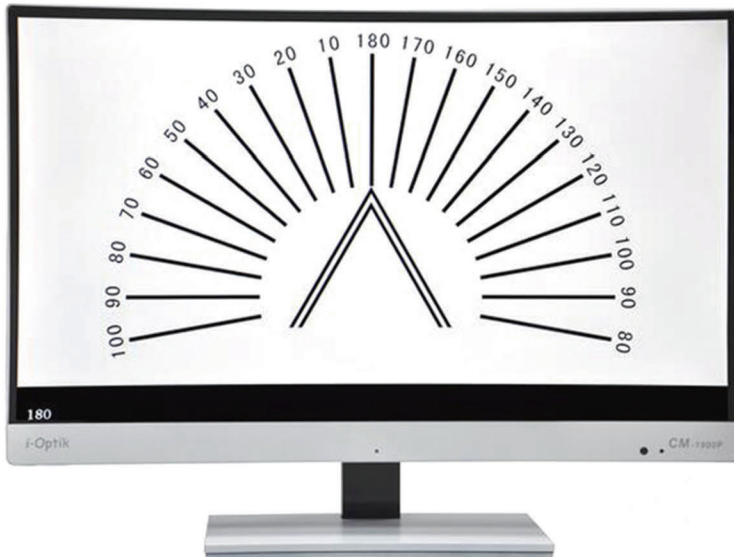
Sphere	-19.00~+16.75D (0.25D/0.50D/1.00D/3.00D steps)
Cylinder	-8.75D~+8.75D 0.25D steps
Axis angle	0~180° (1°/5°steps)
Pupil distance	Distant range 52~80mm Close range 48~76mm 0.5/1mm steps
Rotary Prism	0~20 Δ (0.1 Δ /0.5 Δ)
Cross Cylinder Lens	±0.25D
Retinoscope	+1.50D(67cm), +2.00D(50cm)
Auxiliary Lens	PH, Binocular (c =1.0mm)
	RMV/RMH
	RL(Right eye), GL (Left eye)
	Polaroid (Right eye 135°/45° , (Left eye 45°/135°)
	Prism (Right 3 Δ BU , 6 Δ BU) , (Left 3 Δ BD, 10 Δ BI)
	Cross Cylinder Lens(±0.50D Axis=90°)
PD Lens	
CV head size	381mm×286mm×111mm 3.8kg
Table size	243mm×171mm×7mm 0.5kg
Power supply	AC220V 50Hz or AC110V 60Hz, 90W

TCS-880 Combined Table and Chair



Specification		
Table	Dimensions	1040(W)*1030(D)*1830(H)mm
	Table size	1000(W)*480(D)mm
	Lift range for phoropter arm	420mm
	Power supply	AC 220V/55Hz, 110V/60Hz, 120W
	Net weight	150.0Kg
Chair	Lift range for chair	480~630mm
	Net weight	45.0Kg

CM-1900C LED Visual Chart

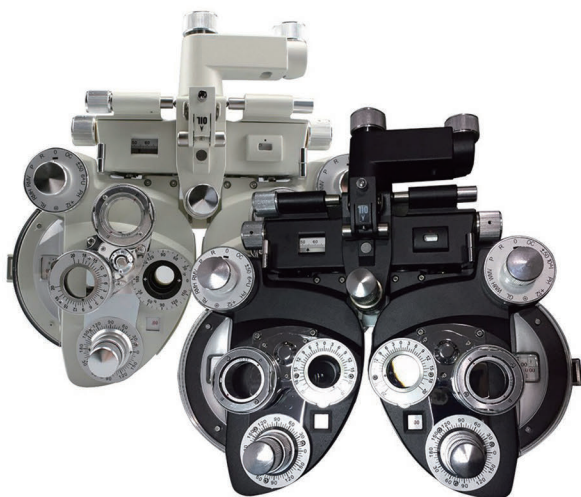


Features:

1. 23-inch high contrast and bright display
2. Smooth and quiet operation
3. Wireless Remote control
4. Wide range of test types
5. Precise distance adjustment
6. Easy mounting
7. Random test sequence

Display	23"LCD(color) High resolution Monitor
Brightness	250cd/m ²
Chart versions	E, C, ABC, 123, child, special version charts
Chart acuity	6/3-6/150 20/10-20/500 0.04-2.0
Distance	2.0~7.0m
Power supply	Input: AC100-240V, 50/60HZ
Power consumption	≤33W
Dimension	530(W)×390(H)×120mm(D)
Weight	5.5KG(Net.Weight)
Remote	IR
Batteries for remote control	3A

ML400 Manual Phoropter



Sphere powers range	+16.75D to -19.00D, with minimum reading 0.25D or 0.12D (When +0.12D auxiliary lens or optional 0.12D lens is in use) +26.75D to -29.00D (When optional 10.00D lens is in use)
Cylinder power range	0 to -6.00D, with minimum reading 0.25D or 0.12D (when auxiliary lens is in use) 0 to -8.00D (when -2.00D auxiliary lens is in use)
Astigmatic axis scale	0 to 180 in 5 steps
Cross cylinder	0.25D, reversal type (synchronized with astigmatic axis)
Interpupillary adjustment	48mm to 80mm in 1mm step (right and left synchronized)
Forehead rest adjustment	16mm backward and forward
Convergence	The optical axes of the lenses are aligned at a distance of 400mm from the vertexes of the corneas (2mm each for right and left inward)
Interpupillary distance enabling convergence	=57mm to 80mm
Corneal distance device	2mm forward and 5mm backward from standard plane; with scale
Effective field of view	19mm
Weight	5kgs

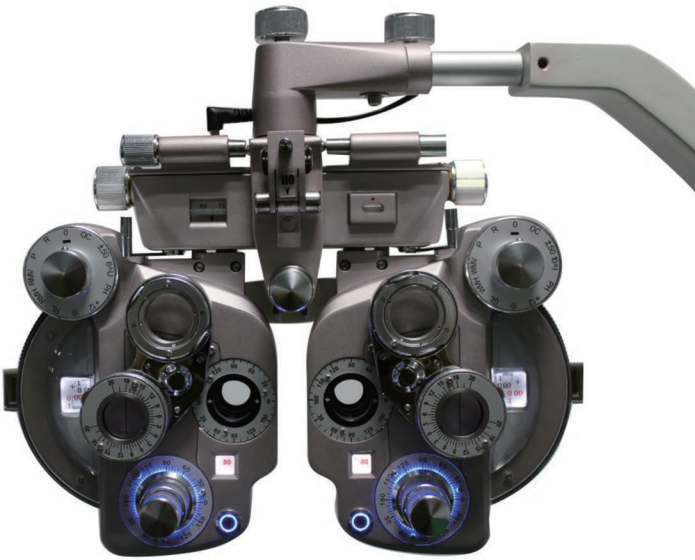
ML500 Manual Phoropter

SHTOPVIEW



Sphere powers range	+16.75D to -19.00D, with minimum reading 0.25D or 0.12D (When +0.12D auxiliary lens or optional 0.12D lens is in use) +26.75D to -29.00D (When optional 10.00D lens is in use)
Cylinder power range	0 to -6.00D, with minimum reading 0.25D or 0.12D (when auxiliary lens is in use) 0 to -8.00D (when -2.00D auxiliary lens is in use)
Astigmatic axis scale	0 to 180 in 5 steps
Cross cylinder	0.25D, reversal type (synchronized with astigmatic axis)
Interpupillary adjustment	48mm to 80mm in 1mm step (right and left synchronized)
Forehead rest adjustment	16mm backward and forward
Convergence	The optical axes of the lenses are aligned at a distance of 400mm from the vertexes of the corneas (2mm each for right and left inward)
Interpupillary distance enabling convergence	=57mm to 80mm
Corneal distance device	2mm forward and 5mm backward from standard plane; with scale
Effective field of view	19mm
Weight	5kgs

Manual Phoropter ML-600 With LED Light



Sphere powers range	+16.75 to -19.00 diopters; Step: 0.25 diopters
Cylinder power range	Concave(-) Range: 0.00 to -6.00 diopters; Convex(+) Range: 0.00 to +6.00 diopters (optional) (0.00 to -8.00 diopters with additional lens of -2.00 diopters) Step: 0.25 diopters
Cylinder axis	0 to 180°, 5° steps
Cross Cylinder	±25 diopters
Rotary Prisms	0 to 20, 1 steps
P.D. adjustment	50-75mm, 1mm as a step
Standard Accessory lenses	Two 0.12D and -2.00 cylinder lenses, two plano lenses for sealing front opening
Standard Accessories	1 near point card with holder and reading rod, dust cover, face shield, accessory case for lenses
Net Weight	Approx 4.5 kg
Dimensions	31.8 x 9.6 x 29.3(cm)

CV-600 Digital Phoropter



Sphere powers range	+27.00m-1~-27.00m-1(0.25m-1/0.50m-1/1.00m-1/3.00m-1)
Astigmatic power	+8.00m-1~-8.00m-1(0.25m-1/1.00m-1)
Cylinder axis	0~180° (1°/5°)
Prism	0~20(all direction)(0.1/0.2/0.5/1.0)
Pupillary distance adjustment range	48~80mm (0.5mm/2.0mm)
Cross cylinder	Auto Jackson cross cylinder: ±0.25m-1
Testlen(au lens)	Rea-Green filter, Polarized filter(45°/135°), prism(6°/10°) Rea Maddox(horizontal/vertical), lens of retinoscopy(+1.5m-1/+2.0m-1) cross cylinders for presbyopia(0.50m-1), Occluding plate(left/right), Pinhole and cross hairs glass (left/right)
Cornea alignment scale (on optical axis)	12mm, 13.75mm, 16mm, 18mm, 20mm
Convergence	Near-point distance 40/67 cm (Minimum pupillary distance at 40cm convergence: 53mm)
Forehead reset adjustment range	15mm

Lens Meter

L900 Auto Lens Meter

with Blue Light, PD PH Function



TECHNICAL INDEXES

Measuring range

Sphere: 0 to $\pm 35D$ (0.01D/0.06D/0.12D/0.25D steps)

Measuring range		Accuracy
< 0D, $\geq -5D$	> 0D, $\leq +5D$	± 0.06
< -5D, $\geq -10D$	> +5D, $\leq +10D$	± 0.09
< -10D, $\geq -15D$	> +10D, $\leq +15D$	± 0.12
< -15D, $\geq -20D$	> +15D, $\leq +20D$	± 0.18
< -20D, $\geq -35D$	> +20D, $\leq +35D$	± 0.25

Cylinder: 0 to $\pm 10D$ (0.01D/0.06D/0.12D/0.25D steps)

Axis: 0° to 180° (1° steps)

ADD: 0 to 10D (0.01D/0.06D/0.12D/0.25D steps)

Prism: 0 to 15Δ (0.01 Δ)

Measuring range	Accuracy
> 0 Δ , $\leq 5\Delta$	0.1 Δ
> 5 Δ , $\leq 15\Delta$	0.2 Δ

Cylinder mode: +, + / - , -

Prism mode: X-Y: Cartesian Coordinates H: I, O . V: U, D

P-B: Polar Coordinates

mm: mm expression

Reading resolving power: 0.01D/0.06D/0.12D/0.25D

PD measure

Measure single vision lens, bifocal lens, trifocal lens and progressive lens, etc.

Contact lens measure

UV transmissivity test

Measurable transmissivity: > 10%; > 20% at $\pm 10D$ and over

Contact lenses: 0 to $\pm 25D$, BC 6.00 to 9.00

Display: 7.0-inch HD touch color display

Menu: readable diagram, easy operation

Lens diameter: 20mm-100mm

Power source: AC100 ($\pm 10\%$) -240 ($\pm 10\%$) V 50/60Hz 40VA

Power consumption: 40W

Weight: 6.8kgs

Dimensions: 565mm*350mm*355mm (W*D*H)

Environmental condition

a. Temperature: $5-40^\circ C$ (In usage)

$-20-60^\circ C$ (In storage/transference)

b. Humidity: 30-85% (Non-condensing) (In usage)

10-95% (In storage/transference)

c. Atmospheric pressure: 700-1060hpa

d. Altitud: up to 2000m

e. Others: No harmful dust or smoke

Optional accessories: printer (built-in thermosensitive paper size: 57mm)



NJC-4 Manual Lens Meter

AC and DC Power

Vertex power	range	+20diopter-20diopter, step 0.12D
Prismatic power	range	5 prism diopter, step 1diopter
Cylindrical axis	range	0 to 180 degrees, step 1 degree
Lenses accommodated	Diameter 20mm to 85mm	
Eyepiece focusing	-5D to +5D	
Bulb	220V-110V/6V/3W	

Auto Lens Meter

AUTO LENSMETER

D-903



Range of measurement

Sphere	0~±25D 0.01/0.12/0.25D step
Cylinder	0~±9.99D 0.01/0.12/0.25D step
Axis	0°~180° (1°step)
Add.	0~+9.99D 0.01/0.12/0.25D step
Prism degree	0~15△ 0.01/0.12/0.25D step

Measurement mode

Cylinder	+,+/-,-
Prism	X-Y,P-B
Contact lens	Soft/hard
Measuring mode	Single/progressive/ automatic recognition

Specifications

Diameter of lens	Φ20~108mm
PD	40~90mm, 0.5mm step
Speed of measurement	0.1s
Display	5.6" TFT LCD 758×480 pixels
Printer	Thermal Printer
Dimension	222(D)×161(W)×372(H)mm
Package	515(H)×320(W)×390(D)mm
Weight	~5KG
Power supply	100~240V 50~60HZ



Range of measurement

Sphere	0~±25m ⁻¹ 0.01/0.12/0.25m ⁻¹ steps
Cylinder	0~±9.99m ⁻¹ 0.01/0.12/0.25m ⁻¹ steps
Axis	0°~180°(1°step)
Addition	0~±9.99m ⁻¹ 0.01/0.12/0.25m ⁻¹ steps
Prism	0~15cm/m 0.01/0.12/0.25cm/m steps

Measurement mode

Cylinder	+,+/-,-
Prism	X-Y,P-B
Contact lens	Soft/hard lens
Measurement mode	Single/progressive/automatic recognition

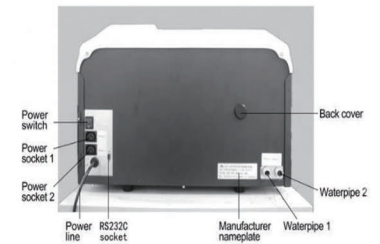
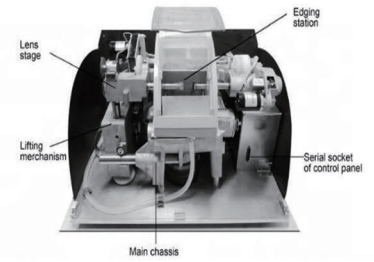
Specifications

Diameter of lens	Φ12~Φ112mm
PD	40~90mm(0.5mm steps)
Measuring speed	0.1second
Abbe number	30~60
Display	7"LCD/TFT
Printer	Thermal printer
Dimension	180mm×255mm×455mm
Package	620mm×390mm×390mm
Weight	~12kg
Power supply	100~240V 50/60HZ 25VA

FE-600 3D Patternless Auto Lens Edger



FE-600 AUTO LENS EDGER
Components Description



3D Lens Edger Best Quality Optical Patternless Lens Edger FE600

CE



Specifications

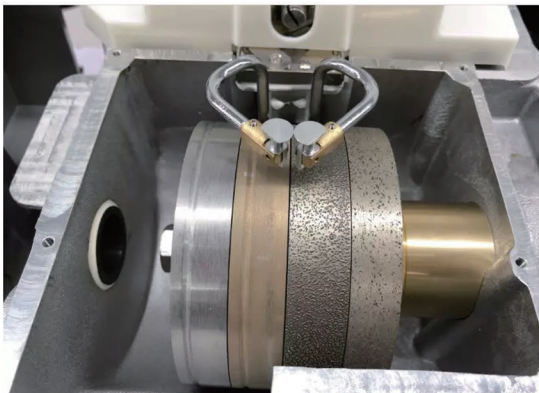
Specifications: FE-600

Edging

- | | |
|--|--|
| <ul style="list-style-type: none"> • Automatic Initialization • Lens front and rear face tracing: 3D • Equipment <ul style="list-style-type: none"> * Roughing Glass Edging * All Plastic Edging (CR39, High Index, Polycarbonate) * Bevel/Rimless Finishing Edging * Bevel/Rimless Polishing Edging • Automatic Clamping Pressure • Edging pressure controlled according to lens material • Graphics storage | <ul style="list-style-type: none"> • Convenient Water Connection • Lens Edging Diameter: <ul style="list-style-type: none"> * \leq to 80mm * Rimless: 17.75mm * Bevel: 19.50mm • Drain Size: \varnothing 100mm • Water Supply Pressure: from 4 to 7 bars • Network Connection |
|--|--|

FE-600 Specifications

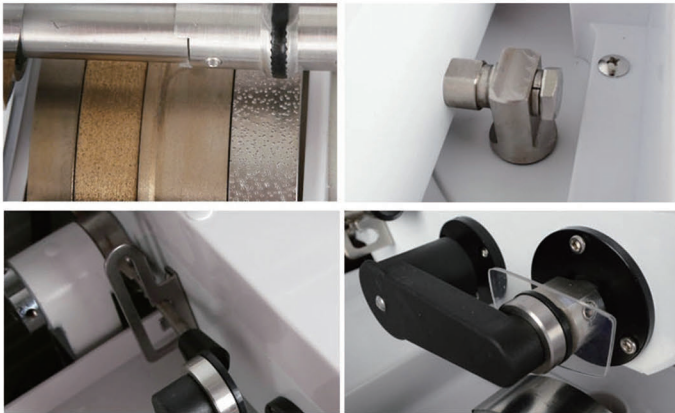
- | |
|--|
| <ul style="list-style-type: none"> • Dimensions: <ul style="list-style-type: none"> * Width: 650mm * Depth: 450mm * Height (visor close): 470mm • Weight: 59kg • Power Supply: 220V/50HZ 110V/60HZ • Power Consumption: 800 W • Pollution Degree: 2 • Installation Category: II • Ambient Temperature: 13°C to 35°C • Relative Humidity: 10% to 80% • Maximum Water Pressure: 7 Bar • Maximum Water Pressure (with pump): 7 Bar • Output of Pump Outlet: <ul style="list-style-type: none"> * 220V: Supply Voltage * 60 W & 55 W : Power available (for the pump) • Fuses to be used for 220V edger: 15A , 3A , 8A • Fuses to be used for 110V edger: 30A , 3A , 8A |
|--|



SJG-5188 Auto Lens Edger



Processing lens	PC lenses, Glass lenses. CR lenses
Edging diameter	18~80mm
Wheels diameter	100mm
Wheels speed	16.7m/s
Power supply	110~220v 60hz~50hz AC420W
Consumption	400VA
Working temperature	5~40C
Dimension	530x418x475mm
Weight	48kgs
Water supply	circulating water



SJG-800 Patternless Lens Edger



SJG-800

Dimension: 625x510x510mm

Weight: 49KGS

Voltage: AC220V/110V 50/60HZ

Power: 550w

Accuracy: Tolerance ± 0.01 mm

Size range: 22-80mm

Axis accuracy: 0.1°

The adjustable step length of size: 0.05mm

Clamping pressure: Third gear for choice

Material: PC, Glass, CR, HI, HR, TC

Dimension: 240x180x130mm

Weight: 5kg

Voltage: AC230V/115V 50/60HZ

Power: 60W

ADD adjustment range: 6mm

Screen tilt angle: 20-100°

Max storage: 500 sets.

Touch screen: 7 inch capacitive screen

Quantity of connecting with the main machine: 2 units

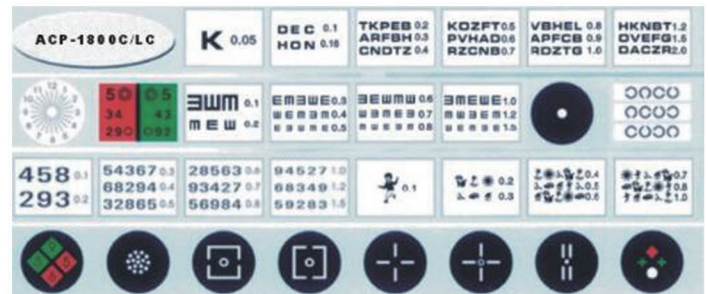
Auto Chart Projector

WZ-3000



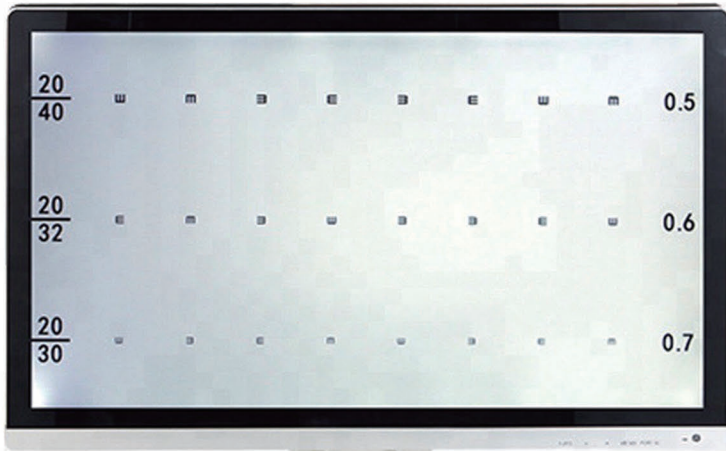
Mask Number	1 open, 5 horizontal lines, 8 vertical lines, 21 single letters, 1 red/green
Mask Switching speed	One mask per 0.01~0.02s
Program	2 sets programs, each program contains up to 30 steps
Lamp	12V,50W(halogen lamp) 12V,10W(LED)
Power saving function	Will automatically standby in 10 min
Power source	AC 220V ,50Hz or 110V, 60Hz
Power consumption	80W
Dimensions	320mm(L) x 218mm(W) x 240mm(H)
Net weight	7.2Kg
Standard accessories	Remote control, Polarized metal screen, halogen lamp, polarized glasses, fuses(2), batteries(2)
Optional accessories	Floor stand, wall stand

ACP-1800

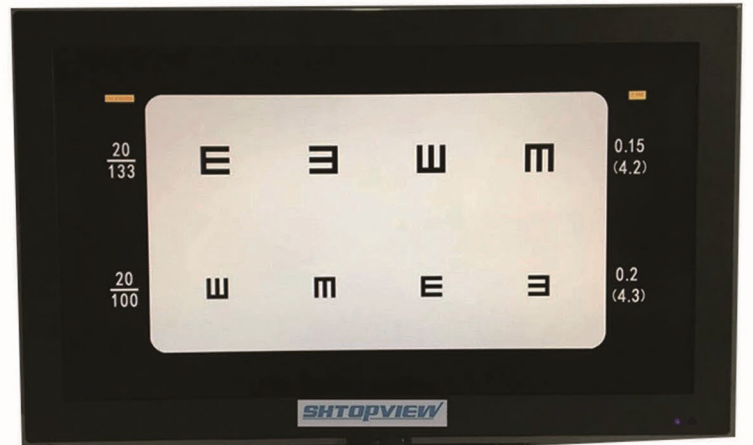


Projection Distance	1.5m~6m	
Projection Magnification	30x (at 5m)	
Projection Size	330mm (w) x 270mm (H) (at 5m)	
Chart	30 different pattern	
Speed of chart conversion	One chart per 0.03s	
Mask	1 open, 5 horizontal different lines, 8 vertical lines, 21 single letters, 1 red/green	
Speed of mask conversion	One mask per 0.03s	
Program	2 sets programs, each program contains up to 30 steps	
Light source	12V, 50W Halogen Lamp	LED lamp
Auto-off function	After 10 minutes idle time	
Power source	AC 220V, 50HZ Or 110V, 60Hz	
Power consumption	80W	40W
Accessories	Remote control, polarized metal screen, halogen lamp, polarized glasses, fuses (2), batteries (2)	Roommate control, Polarized metal screen, polarized glasses, fuses (2), batteries (2)

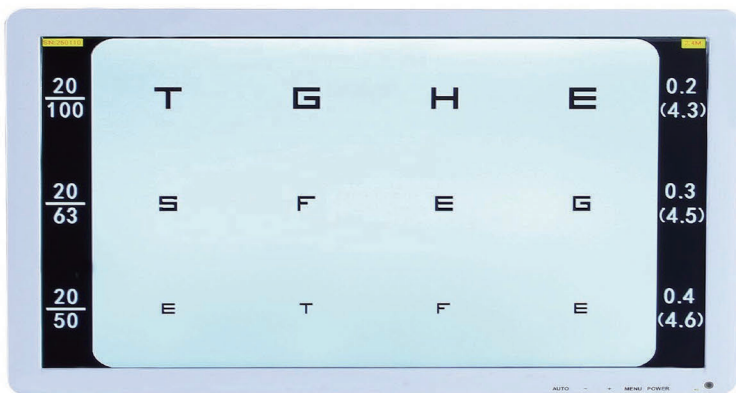
Visual chart tester



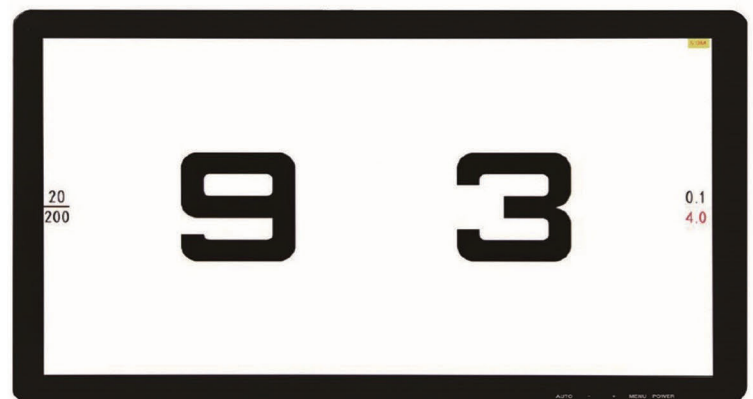
VC-1



VC-3D



VC-3



VC-5

COMBINED TABLE SERIES S-900A

Ophthalmic Unit

- 1.luxurious design and graceful structure
- 2.triangular tabletop can put three kinds of optometry equipment
- 3.Reclining Chair go up/down, rotate and move forward/backward smoothly
- 4.electromagnetic lock can lock tabletop stable with no rotation if necessary
- 5.controlling panel potentiometer supply optional voltage for the slit lamp, keratometer
- 6.retinoscope and ophthalmoscope's charging outlet



FEATURES

Unit size	1200x1100x1900mm
Table size	400x490x100mm
Tabletop up and down range	90mm
Arm up and down range	280mm
Chair up and down range	170mm
Tabletop rotation range	360°
Chair reclining range	160°
Voltage	AC110V/220(60/50Hz)
Weight	220kg



Lifting Chair

Reclining Chair go up/down, rotate and move forward/backward smoothly

Arm

Arm swing angle: $\pm 35^\circ$

Triangle Tabletop

The triangle table can rotate 360°, The slit lamp and other small equipment can be placed on it

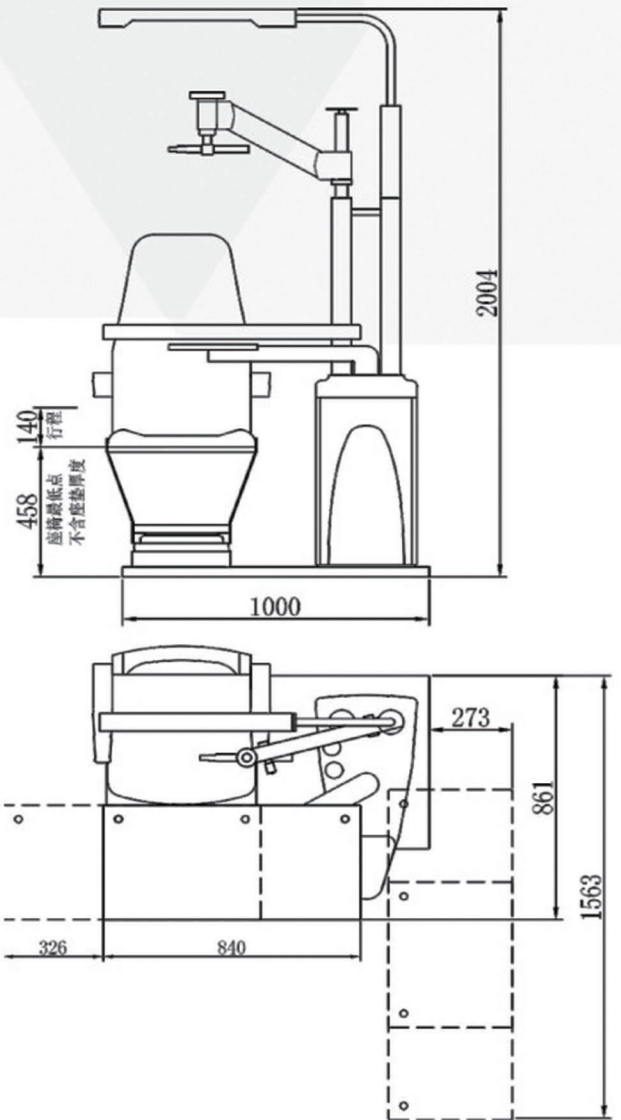
Control Panel

Controlling panel potentiometer supply optional voltage for the slit lamp, keratometer

Ophthalmoscope

Retinoscope and ophthalmoscope's Battery Charging

TR-102A



Mechanical Parameters

- Up/Down angle of swing arm: $\pm 30^\circ$
- Table size: 840mm \times 405mm
670mm \times 405mm
- Table rotational angle: 90°
- Table sliding movement range: 330mm
- Angle of rotation for chair: $\pm 60^\circ$
- Chair height adjustment range: 460~600mm
- Loading for chair: 150kgs
- Lifting height for pillow: ≤ 150 mm
- Backrest obliquity: $90^\circ \sim 135^\circ$

Electrical Parameters

Input voltage: 110V/220V AC 50Hz~60Hz

Engine power: 55W 220V AC

Light : 16W 110V/220V AV

Fuse: 5A 250V AC

No load power: 1W

Pressure test: 2KV

Main wire: 10A 250V

Working mode: S1

Working temperature: $-10^\circ\text{C} \sim +40^\circ\text{C}$

Relative humidity: less than 90%

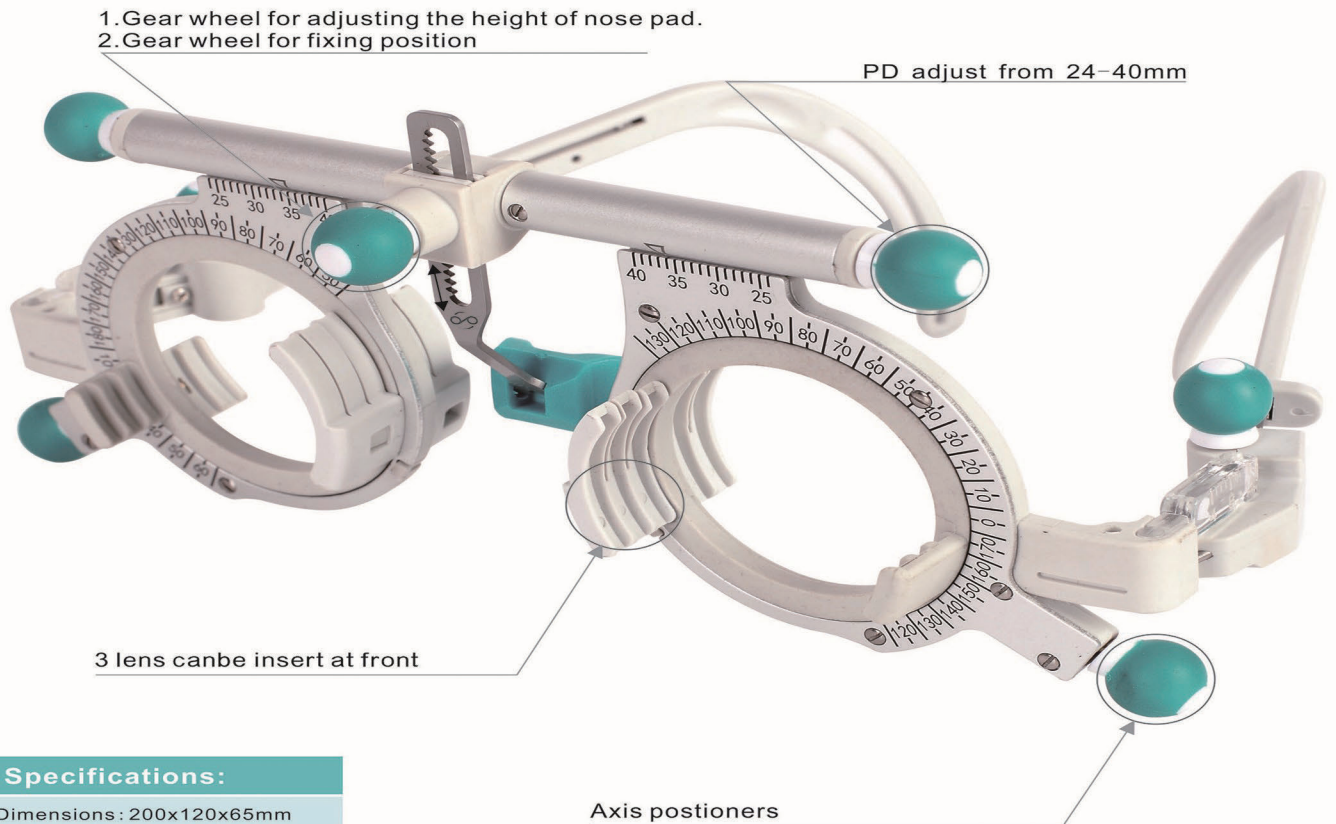
Installation Dimension

Figure size: 1560mm \times 1000mm \times 2000mm

Weight: 175kgs

TF-02 Titanium Trial Lens Frame

Universal Trial Frames



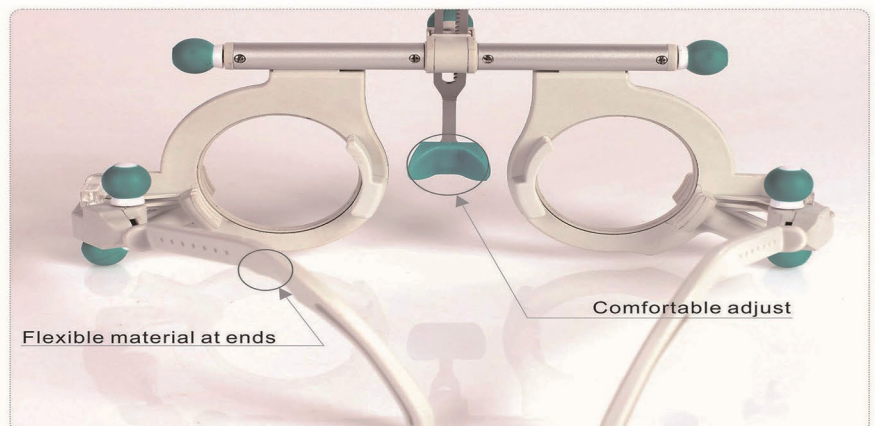
Specifications:

Dimensions: 200x120x65mm
 Packed weight: 225g
 Net weight: 53g

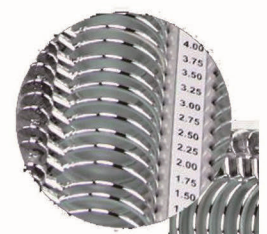
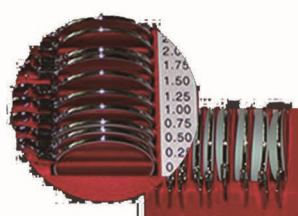
Performance indexes:

- 1) pupil distance adjustment range: binocular pupil distance 48 ~80mm, left or right pupil distance 24 ~40 mm; Minimum scale value 1mm
- 2) the axial scale of the dividing disk is 130 °~ 0 °~ 120 °on the left and 50 °~ 180 °~ 60 °on the right. The axis scale increases counterclockwise along the axis of the mirror frame. The effective internal aperture of the frame is 5 °
- 3) Effective internal aperture of mirror frame: 33.5mm
- 4) Number of lenses inserted when left or right frames are used: 5pieces (front 3 rear 2)
- 5) the lens rotates around the optical axis in the inner circle of the lens frame is 360 °
- 6) the lens optics The unparallelism between the axis and the geometric axis of the frame: $\leq 2.5^\circ$
- 7) the difference between the optical center and the geometric center of the lens: $\leq 0.5\text{mm}$
- 8) the displacement of the lens relative to the geometric center of the frame: $\leq 0.3\text{mm}$
- 9) nose Range of adjustment: adjustable length: $0 \leq 22\text{mm}$; Angle: 360°
- 10) adjustable length range of left or right foot: 0~20mm
- 11) weight: 53g

Clinical use: combined with optometry lenses for refractive examination of eyes



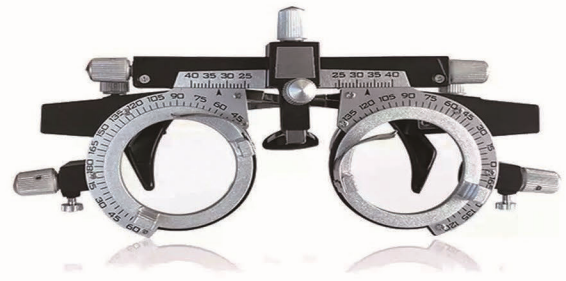
266JS Trial Lens Set



Trial Lens Set Parameters

Trial Lens Set 266PCS															
SPHERE LENS						CYLINDER LENS						PRISM LENS	ACCESSORY LENS		
CONVEX(+)			CONCAVE(-)			CONVEX(+)			CONCAVE(-)						
0.12	2	5.00	2	0.12	2	5.00	2	0.12	2	0.12	2	0.50	2	Red filter lens	1
0.25	2	5.25	2	0.25	2	5.25	2	0.25	2	0.25	2	1.00	2	Green filter lens	1
0.50	2	5.50	2	0.50	2	5.50	2	0.50	2	0.50	2	2.00	2	Plane lens	2
0.75	2	5.75	2	0.75	2	5.75	2	0.75	2	0.75	2	3.00	1	Black lens	1
1.00	2	6.00	2	1.00	2	6.00	2	1.00	2	1.00	2	4.00	1	Cross line	2
1.25	2	6.50	2	1.25	2	6.50	2	1.25	2	1.25	2	5.00	1	White maddox	1
1.50	2	7.00	2	1.50	2	7.00	2	1.50	2	1.50	2	6.00	1	Frosted lens	2
1.75	2	7.50	2	1.75	2	7.50	2	1.75	2	1.75	2	7.00	1	Pin hole	1
2.00	2	8.00	2	2.00	2	8.00	2	2.00	2	2.00	2	8.00	1	Slit	1
2.25	2	8.50	2	2.25	2	8.50	2	2.25	2	2.25	2			Cross Cylinder	2
2.50	2	9.00	2	2.50	2	9.00	2	2.50	2	2.50	2				
2.75	2	10.00	2	2.75	2	10.00	2	2.75	2	2.75	2				
3.00	2	11.00	2	3.00	2	11.00	2	3.00	2	3.00	2				
3.25	2	12.00	2	3.25	2	12.00	2	3.25	2	3.25	2				
3.50	2	13.00	2	3.50	2	13.00	2	3.50	2	3.50	2				
3.75	2	14.00	2	3.75	2	14.00	2	3.75	2	3.75	2				
4.00	2	15.00	2	4.00	2	15.00	2	4.00	2	4.00	2				
4.25	2	16.00	2	4.25	2	16.00	2	4.50	2	4.50	2				
4.50	2	18.00	2	4.50	2	18.00	2	5.00	2	5.00	2				
4.75	2	20.00	2	4.75	2	20.00	2	6.00	2	6.00	2				

TTF-08 PVC Trial Lens Frame



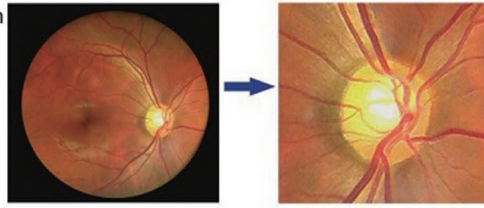
RB307 Kids Trial Frame



Hand Held Fundus Camera

Features and benefits

- Images real-time display, two times magnification
- Non-mydratic and high definition imaging.
- Micro SD memory card up to 80,000 images
- USB and WiFi connection
- Low weight 450g , movable and portable
- Rechargeable battery provides up to more than 4 hours of continuous operation.
- Optional imaging modules for examination: posterior ophthalmoscope, anterior segment ophthalmoscope, otoscope, and dermatoscope.



HFC-1



Performance and Parameters

FOV	40°	Power	≤6VA
Minimum pupil	3mm	Storage	Micro SD card
Refractive compensation	-20D~+20D	Power supply	3.7VLithium Battery
Light source	White LED/IR	Interface	Mini USB/Wifi
Image resolution	1920×1080	Size	160mm(W)×90mm(D)×190mm(H)
Focus Mode	Manual	Weight	450g(Typical)
Screen	3.5"		

HFC-02

Technical Parameter

FOV	45°	Transmission and storage	Internal capacity 16GB ; USB/Wifi/BT/4G
Minimum pupil	2.5mm	Weight	560g
Refractive compensation	-20D~+20D	Power supply	Lithium Battery 3.7V 3400mAh
Focus way	Auto / manual	The battery continuously working time	6h (Standby time exceeds 24h)
Focus mode	8 targets fixation	Total charging time	3.5-4h
Image resolution	16MP	Operating system	PC: Windows system APP: Android
Screen	3.97 inch multi targets touch screen 800×480	ID Card reading and collection	Support
Shoot type	Infrared, white light	NFCcard reader	Support
Image format	JPEG	Connect function	Professional software, APP, support DICOM, support cloud service system, patient data management software, support wireless printing



Fundus Camera



SK-650B

Specification

Optical Lens	Aspheric system
Test Mode	Non-mydratic and FFA
Fundus Obsevation	Moved platform
Red-Free	No
Focus	Split-line aligning focusing
Digital Camera	CANON EOS Technology
Color Image Resolution	5184*3456
Monochrome Image resolution	1360*1024
Min. Pupil Size	3.3mm
Compensation range	-2.5D~+30D
Fundus observation para-position indication	Dots overlap
Fixation target	External eye fixation lamp & 9 internal fixation target (LED dot matrix-Fully controlled by software)
Maximum angle of view	53°
Optical head tilting	Horizontal ±30° Vertical ±12.5°
Working distance	40mm ± 2mm
Software	Support Dicom 3.0, support hosital HIS/PACS system. Image processing, easily operate, strong analysis, support fundus Mosaic, image post processing, measurement, patient profile management

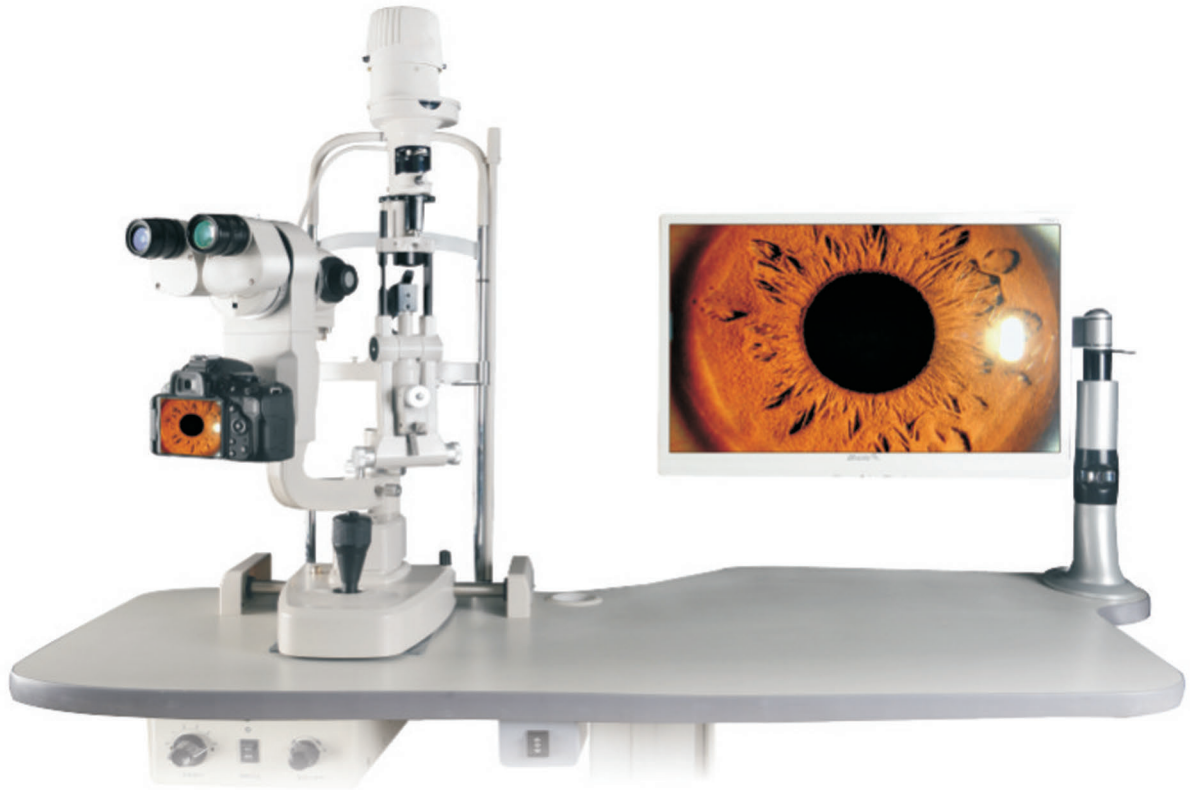
Technical Parameters

Field Scope	Up to 53 degree
Working distance	40mm
Non-mydratic Camera	Supporting
Minimum pupil diameter	3.3mm
Fundus fluorescein angiography	Flash and dynamic angiography
Observation light source	Infrared light
Refractive compensation range	≥±15D
Fixation	External fixation 5 Internal fixation(9 internal fixation optional)
Assisted Alignment	Two round dots alignment
Focus way	Manual, Auto
Exposure way	Manual, Auto
Internet interface	Dicom 3.0 interface, Lan(Optional)
The second viewing screen	Optional (7" LCD)
Eye position recognition	Auto
Working distance	Horizontal±30 degree up and down ±12.5 degree
Working distance	42mm±2mm
Moto-table	Electric Moto-table
Printer	High quality inkjet printer



APS-DER B

Slit Lamp

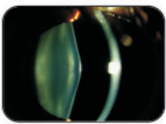


SLM-3ER Slit Lamp

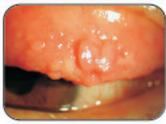
Professional HD SLR camera, up to 16.2Mega pixels
Synchronous flash camera device
Coaxial background lighting compensation system

Dynamic 1080P HD video recording function (optional)

Dicom3.0 interface, you can access the hospital HIS system, PACS systems to support medical network
Exclusive camera systems and analysis software system is highly integrated, fully programmable contr



Lens



Conjunctiva

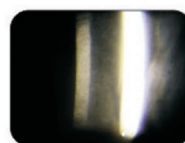


Technical Specification

Model	SLM-3ER
Microscope Type	Galileo Parallel
Image Capturing Way	Nikon D 5200 with High Definition DSLR 16.2 Mega pixels
Synchronous Flash Illumination Compensation System	Optional
Coaxial Background Light System	Yes
Magnification Change Way	Drum Five Magnifications
Eyeiece	12.5x
Total Magnification	6x 10x 16x 25x 40x
Diopter Adjustment	-5D ~ +5D
Slit Illumination	Five Steps (Stepless Optional)
Slit Width	0-14mm Continuous
Slit Height	1-14mm Continuous
Slit Angle	0-180° adjustable
Slit Inclination Angle	5° 10° 15° 20°
Light Spot Diameter	0.2mm,1mm,2mm,5mm,10mm,14mm
Filters	Heat Absorption, Grey, Redfree, Cobalt Bule
Fixation	Red LED
Power	
Illumination Bulb	German OSRAM Halogen Tungsten Lamp
Input Voltage	110V/220V (±10%)
Input Power	175VA
Diffuse Lens	Yes
Preset Lens	Yes
Laser Interface	Yes



cornea



Corneal Endothelium



Iris



Lens

Slit Lamp

5 Step Magnification

LED Illumination

More than 50,000 hours working time

Reduce eye's stress

Provide bright and sharp light

Continuous Illumination control

Possible accessories

Yellow filter



LS-4

SPECIFICATION

Optical System	LS-4
Type	Galilean system, Parallel type, Haag-streit type
Magnification Changer	Rotating drum change
Magnification	6X 10X 16X 25X 40X
Eyepiece	12.5X
Field of view	6x(φ33) 10x(φ22) 16x(φ14) 25x(φ8.5) 40x(φ5.5) mm
Pupil Range	52 - 82 mm
Diopter	±7D

Illumination

Slit Width	Continuous from 0 to 14 mm
Slit Length	Continuous from 1 to 14 mm
Slit angle	0° - 180°
Slit Aperture	Continuous from 1 - 14 mm, φ14, 10, 5, 3, 1, 0.2 mm
Slit Vertical Tilt	5° 10° 15° 20°
Filter	Heat Absorption, Grey, Redfree, Cobalt Blue
Fixation Lamp	Red LED 3.5V
Light Resource	LED

Power

Input Voltage	100 - 240V 48 - 62Hz
Input Power	70VA

Dimensions and Weight

Dimensions	740*640*450 mm
Net Weight	21kg
Gross Weight	24kg

Technical Parameter

Microscope

Microscope Type: Converging stereoscope microscope

Magnification Selection: Two Steps Magnifications

Eyepiece: 10X

Magnification Ratio (Field of View): 10X (18mm), 16X(14.5mm)

Pupillary Adjustment: 50mm ~ 82mm

Diopter Adjustment: ±5D

Based

Side Shift: 110mm

Depth Shift: 90mm

Height Shift: 30mm

Chin rest

Height shift: 80mm

Fixation Target: Red LED

Illumination system

Slit Width: 0~9mm Continuous (at 9mm, slit becomes a circle)

Slit Height: 1~8mm Continuous

Slit Angle: 0° ~180° adjustable

Diameter of Light Spot: φ9mm, φ8mm, φ5mm, φ3mm, φ2mm, φ1mm, φ0.2mm

Filter: Heat Absorption, Grey, Red-Free, Cobalt Blue

Illumination Bulb: 12V 50W halogen lamp

Power

Input Voltage: 110V/220V AC

Frequency: 50/60Hz

Power Consumption: 68VA

Weight and Size

Gross Weight: 18KG

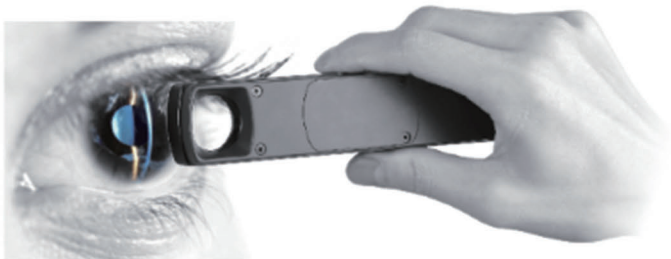
Dimension: 690mm(L)*440mm(W)*420mm(H)



BL-66B

Portable Slit Lamp S150

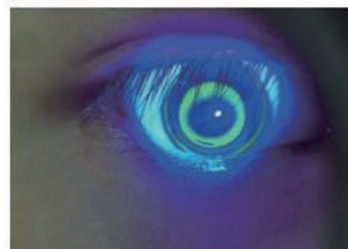
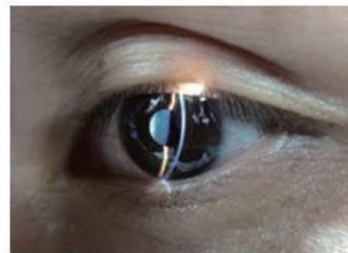
All in one, All in hand



Model No.	S150
Magnification	6X
Illumination	● ● ●
Slit Length	> 12mm
Slit Width (min)	0~12mm continuously adjustable
Filter	Cobalt blue filter
Power	Li-ion battery 3.7V/3400mAh
Illumination	LED bulb 3V/1W
Working Time	More than 6 hours
Recharging Time	3.5 hours
Net Weigh	240 g (including battery)



Image Gallery:



Portable Slit Lamp



ML-5S1

Technical Parameters	
Eyeiece	10X, 16X
Objective Lens	1X
Total magnification	10X, 16X
Diopter Compensation	±5D
Interpupillary Distance Adjustment	52mm~72mm
Working Distance	80mm
Slit Width	0~10mm (continuously adjustable)
Slit Height	0.5mm, 3mm, 5mm, 10mm
Spot Diameter	0.5mm, 3mm, 5mm, 10mm
Slit Rotator Angle	Horizontal ±30°
Filter	Heat Absorption, Grey, Red-free, Cobalt Blue
Illumination	White LED
Working Hours	5~6 Hours
Voltage	7.2V750Ah
Net weight	750G
Gross weight	2.5KGS
package	White and black garrying cases for choice
Packing size	410mm*195mm*230mm

Technical Parameters	
Magnification	10X
Working distance	80mm
Refractive compensation	-7D~+7D
Slit width	0-10mm continuously adjustable
Aperture diameter	1mm, 5mm, 10mm, 14mm
Filter	Heat-absorption, Grey, Red-free, Cobalt blue
Light source	White LED
Image resolution	16MP
Focus Mode	Auto
Screen	3.97 inch touch screen
Storage	Internal capacity 16GB
Power supply	Lithium Battery 3.7v 3400 mAh
Interface	USB/WIFI/BT/4G
N,Weight	600g



HSL-02



S-150

Specification	
Magnification	5X
Range of slit length	5mm~11mm
Minimum slit width	0.2mm
Working distance	12~32mm
Power supply	AA batteries x 2
Illumination	LED blub(3.3V/1W)
Battery life	More than 3h (AA alkaline butteries x 2)
Net weight	150g(without batteries)
Advantages	<ul style="list-style-type: none"> * Ultra-portable * LED illumination * The most comfortable examine experience for the patient * Sharpest Slit * No need to replace illumination lamp

Retina Lens

Retina Lens
90D 78D 20D



Deeper Observation, Better Diagnosis

Lens	90D	78D	20D
Magnification ratio	0.76X	0.93X	3.13X
Static FOV	74.2°	81.4°	46°
PrismWorking Distance (mm)	7	8	50
Clear Aperture(mm)	21	26	48
Dimension(mm)	Ø27 x 13	Ø33 x 15	Ø56 x 20



3 Mirror Gonioscope Lens YZ-13

Contact Lens	Image
Fundus Lens	
Goniolens	
Three Mirror Lens	



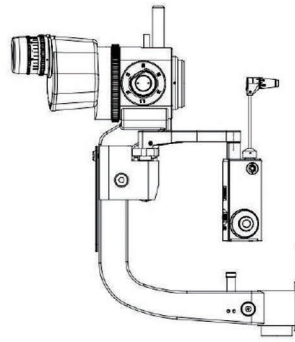
Applanation Tonometer



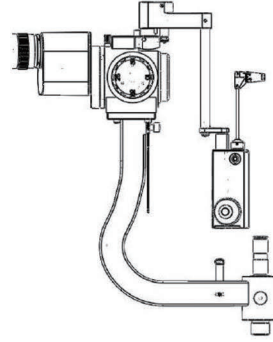
SK-Q/R/T

- *High Accurate Design, 2 times higher than traditional design
- *LED Display+Mechanical Reading
- *kpa, mmHg Measurement Display, with arbitrary Switch
- *Measurement Data Locking
- *Auto-sleep

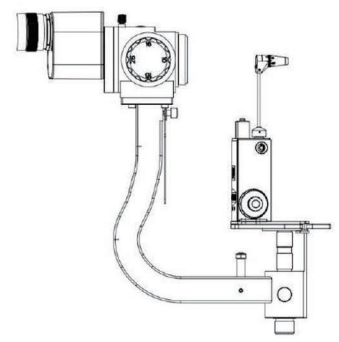
3 model optional



SK-Q



SK-R



SK-T

SK-T	T. Mode
SK-R	R. Mode
SK-Q	Available for Haag-streit, LS-7
Measurement Accuracy	$\leq 0.49\text{mN}(0.066\text{kpa})$
LED Accuracy	$\leq 0.1\text{mmHg}$
Measurement Range	0-80mmHg(0-10.64kpa)



T type



R type

YZ-30R

Technical Parameter	
Range of Measurement	0mmHg - 80mmHg (0 kPa~10.64kPa)
Moving Range of the Rings	1.53x2=3.06mm
Prism Diameter	7mm
Moving Range of Prism	$\pm 1.5\text{mm}$
Dimension	290mmx170mmx110mm
Net Weight	500g (T Type) 800g (R Type)

Rebound Tonometer SW500



Features

1. It's a handset device: small, portable and proven to be accurate by several independent clinical studies, which also confirms the exceptional user and patient friendliness of this device
2. The probe has very less contact with patient, avoiding discomfort reaction.
3. Automatic exist function of probe
4. Easy and fast measuring with outstanding accuracy and consistency without the need of anesthesia
5. One-time use of the probe to avoid cross-infection
6. Measurement can go along both in standing and lying posture
7. Wireless data printing
8. Easy to learn, easy to use
9. Lightweight and handy
10. No anesthesia, avoiding discomfort reaction

Characteristics

1. Measure Range: 3mmHg~70mmHg
2. Measure Error: 1.5mmHg(3mmHg\leqintraocular pressures\leq25mmHg)
2.5mmHg(25mmHg)
3. Rating voltage: DC3V(2 AA Batteries)
4. Rating input power: 1VA



Full-Automatic Non-contact Tonometer ST-1000P



Basic Specifications	
Intraocular pressure (IOP) measuring range	1mmHg~ 30mmHg /1mmHg ~60mmHg (precision of 1mmHg)
Measuring system	dual sensor system of light and pressure
Working distance	≥ 11 mm
R/L	automatic detection and display
Measuring result	10 times per eye; 3 times result printing per eye
Recording	build-in printer
Measuring mode	auto/manual
Focus	when luminous spot is in the focus frame, 2 modes can be chosen. auto mode : auto intraocular pressure measurement manual mode : when it's good focus, the frame will turn yellow into green, and click to start the measurement
Error indication	if the measurement signal is weak, the IOP will be enclosed by (), or display "ERR "
Safety limit button	install measurement for minimum distance between head and patient
Safety functions	the distance between air nozzle and cornea is controlled in preset range(such as 11mm); it will stop going forward when the cornea is too closed to air head.
Movement range	≥ 30 mm(front to back)/ 90mm(left to right)/ 30mm(vertical)
Jaw layer vertical movement	0~65mm with under jaw layer
Display mode	10.1-inch HDMI color LED touch monitor
Output port	USB2.0
Working platform	electric elevating platform
Others	
Size	380 mm (L) x 460mm (W) x 505mm (H)
Weight	19.7kg
Power supply	220V/50Hz

Retinoscope Ophthalmoscope Diagnostic set



SR-24



3.5V Coaxial Ophthalmoscope

- * Coaxial optics enables easy entry into undilated pupils through precise lamp filament and optical alignment.
- * 3.5V Halogen lamp provides light output for true tissue color and consistent, long-lasting illumination.
- * 28 lenses from 0D, $\pm 1D$, $\pm 2D$, $\pm 3D$, $\pm 4D$, $\pm 5D$, $\pm 6D$, $\pm 7D$, $\pm 8D$, $\pm 9D$, $\pm 10D$, $\pm 12D$, $\pm 15D$, $\pm 20D$, $-25D$, $+40D$.
- * 18 unique aperture / filter combinations for greater versatility



3.5V Streak Retinoscope

- * Multi-coated optics
- * A single control sleeve for vergence and rotation Comfortable operation.
- * Totally dustproof, maintenance free
- * Metal handle-for long lasting operation
- * Superior streak quality enables easier and quicker refractions-even in patients with small pupils
- * The powerful, bright bulb ensures easy recognition of neutralisation.
- * The lowest position gives a divergent beam.



3.5V Fiber-Optic Illuminator

- * Halogen bulb or LED provides light output
- * Fiberoptics for optimal beaming and transmission of the light
- * Fully sterilizable with steam, water, gas or solutions



3.5V Lithium Ion Rechargeable Handle

- * Half the weight of traditional handles, fits more comfortably in your hand
- * Fits all 3.5 V instrument heads
- * The handle enable continuously adjustable brightness
- * Made of High temperature engineering materials ABS
- * Need to use charger DT802



DT802 Desk Charger

- * Compact, portable unit provides convenient recharging
- * Switch mode: Single-Cell/Two-Cell Li-ion/Li Polymer Battery Charger
- * Precharge-CC-CV Operation model
- * Short circuit, reverse-voltage, over-voltage protection. Low Battery Status Indicator
- * Charge status indication by yellow-green LED



Perimeter



APS-T00

Technical specification

Model	APS-T00
Appearance	Integrated Type
Stimulating way	Optical projection
Projection surface	aspheric projection arc
Detection method	Static perimetry, Dynamic Perimetry
Detection scope	0-90°
Brightness Level	0-51db
Testing Distance	300mm
Visual Target Color	Red, Blue, White
Visual Target Brightness	0asb-10000asb
Background Light	White(31.5asb), yellow(31.5asb)
Vision Target Interval time, keeping time	Patients adaptive, standard, slow, custom
Pupil Size Measurement	Auto
Head Movement Way	AEC Eye position monitoring and automatic correction system
Brightness Measurement	Brightness Auto Measurement and correction

Visual Target Size (Goldmann standard)	I Grade II Grade III Grade IV Grade V Grade	
Detection strategy	Full-threshold, fast threshold, custom, Two notation, three notation quantify defects. Intelligent dynamic, fast intelligent dynamic	
Threshold policy	age-related, threshold-related, single strength	
Static Perimetry	Threshold Test Mode	Center 10-2, Center 24-2, Center 30-2, Center 60-4, Nasal step, macula;
	Screening, special test mode	Center 40, Center 64, Center 76; Center 80, Center Arm aly, Peripheral 60, Nasal step, Armaly Full Field, Full Field 81, Full Field 120, Full Field 35, Full Field 246, upper 36, upper 64, Esterman monocular, Esterman binocular
Dynamic Perimetry	dynamic program	manual procedures, standard procedures (Standard 45, standard 30, a high-resolution 15), Static point map, dark spot map, blind spot map, custom scan, custom dynamic program
	Stimulation parameters	adjustable (Speed 1-9 / S, visual target size, color, intensity, test ranges, etc.)
Fixation monitoring	Dynamic real-time video monitoring, physiological blind spot monitoring, Eye tracking curve, eye position offset alarm	
Analysis Software	Reliability analysis, single vision analysis, triple report analyzes, Overview vision analysis, GHT glaucoma semi vision analysis, GPA glaucoma developing analysis	
Report Figure	Value map, grayscale map, the overall bias decibel chart, The overall deviation probability map, chart pattern deviation decibels, Pattern deviation probability plot, starting Figure	

Basic specification	
Inspection range	90°
Inspection distanc	30CM
Background light brightness	White 31.5asb
Visual target brightness	1asb---10000asb
Visual target size	GoldmannIII
Visual target interval time	200ms
Visual target interval time	Standard or adjustment according to patient reflection
Threshold test model	Center 5°-16, center 10°-68, 24-2, 30-2, 30°-60°, nasal step
Upper Threshold test model	30°-40, 30°-76, P-60, 60°-81, 60°-120, 1 90°-135 nasal side
Special detection strategy	Esterman monocular, Esterman binocular, user-customized test, 150° driver monocular fast detection, 150° driver monocular standard detection, upper 36° detection, blind spot detection, 150° horizontal straightness detection
Pupil size test	Automatic
Fixation monitoring	Blind spot monitoring, eye position eye position deviation alarm, eye deviation curve
Environment light detection	Automatic
Analysis software	Reliability analysis, single vision report, triple visionreport, GPA half vision analysis, GPA glaucoma developing analysis, VFI vision index analysis
Operation system	Win7 above
Others	
Size	412mm (length) * 497mm (width) * 513mm (height)
Weight	17kg
Power	100-240V, 50-60Hz



BIO-1000

SK-3000 A/B/P

B-Scan

- *Frequency: 10 MHz
- *Scan Mode: Magnetic driven closed-loop scanning
- *Gray Levels: 256
- *Adjustable Gain: 0-99 db
- *Depth: ≥ 60 mm
- *Angle of Exploration: 53°
- *Time Gain Control (TGC): 0-30db
- *Image Freezing: 20 pcs
- *Resolution: Axial ≤ 0.2 mm, Lateral ≤ 0.4 mm
- *Display Mode: B, B+A
- *Report Print: Video Print
- *Playback: 60 frame and playback screenshot

A-scan

- *Frequency: 10 MHz
- *Measurement Range: 0-60mm
- *Accuracy: ≤ 0.05 mm
- *Default Eye Mode: 6 different Modes and 3 Customized Modes
- *IOL Calculation Method: Standard Deviation

Pachymeter

- *Frequency: 20MHz
- *Accuracy: ≤ 0.01 mm
- *Depth: 0.3-1.5mm
- *Output Mode: Video Print

Other Parameter

- *Computer: Built-in System, 12.1 inch Touch Screen Display
- *Picture Processing: Brightness, Contrast, Image Playback, Pseudo-color, Image Measurement, Image Remark
- *Printer: Sony Duplicator, Computer with Graphic Workstation



ODU-5

A scan

- *Probe: 10MHz, imported probe with fixation light.
- *Resolution: 0.01mm
- *Gain adjustable: 0-120dB
- *Measurement range: 12-43mm(1640m/s)
- *Accuracy: ± 0.02 mm
- *Measuring parameter: ACD, LENS, body Length, axial length.
- *Eye mode: normal/aphakia/dense cataract/PMMA, Acrylic & Silicon for Pseudo Phakic eyes
- *Measuring Mode: Contact and Immersion, automatic and manual.
- *IOL Formula: SRK-II, SRK-T, BINKHORST, HOLLADAY, HOFFER-Q, HAIGIS

B scan:

- *Probe: 10MHz, imported transducer.
- *Scan mode: High accuracy stepping motor drive sector scan.
- *Scan Angle: 53° .
- *Display Depth: 0~56mm
- *Gray: 256.
- *Frame frequency: 10frames/s.
- *100 frames permanent image storage.
- *Cine loop: 256 frames, can measure the playback image.
- *General Measurement: multi-electronic-rule to measure distance, circumference, area(trace method, ellipse method), volume (ellipse method), angle, histogram, profile, stenosis and curvature etc.

Specification

- *Power supply : 100-240V~ 1.2-0.6A Frequency: 50-60Hz
- *Adapter output: DC12.8V 3.0A
- *10.4 inch high resolution LCD screen,
- *Display mode: B, B/B, 4B, B/A, A
- *Dynamic range: 30-100dB, visual and adjustable.
- *Intelligent TGC adjustment: 8 segments.



Corneal Topographer SW-6000

Specification	
Measuring Mode	Placido Cone
Coverage range of measurement	10.91mm (Diameter)
Measuring range of Curvature radius	5.5mm-10.0mm (33.75D-61.36D)
Precision	±0.02mm
Placido Rings	31 Rings
Measurement Points	7936 Points
Display	Axial Curvature map, Tangential Curvature Map, Elevation Map, Imitated Keratoscope Map, 3D cornea Map
Image output	High-Quality color inkjet printer
Adjust range	Left/Right>86 mm; Forward/Backward>40mm; Up/Down>30mm; Chinrest>50mm
Cornea Contact Lenses Fitting Function	
Keratoconus Detecting Function	



OCT Optical Coherence Tomography RetiView 500

Specifications

Methodology	Spectral domain OCT
Axial resolution	≤ 6 μm (in tissue)
Transverse resolution	≤ 20 μm (in tissue)
Scan depth	≥ 2.5 mm (in air)
Scan range	≥ 6 mm
Scan speed	≥ 24,000 A-scans/sec, up to 36,000 A-scans/sec
Scan modes	3D, Raster, Circle
Fundus image	OCT en face
Focus adjustment	-15D to +15D
Pupil diameter	≥ 3 mm
OCT light source	840 nm SLD
Optical power	750 μW (at cornea)
Operation	13.3" touch screen, optional external mouse or keyboard
Power supply	100-240 V, 50/60 Hz
Dimensions	497 mm × 395 mm × 490 mm (L×W×H)
Weight	34 kg (75 lbs)



Operation Microscope

YZ-20P5

Specifications:

Eyepiece Magnification	12.5×16B
Objective Lens	f=200mm
Working Distance	190mm
Magnifications for Main Microscope	5.3×、8×、12×
Diameter of Field	Φ37mm、Φ25mm、Φ16.7mm
Adjustable Diopter	±6D
Adjustable Range of Pupil Distance	50mm~80mm
Maximal Resolution	100LP/mm
Illumination Source	12V/100W, medical cold reflection halogen lamp
Illumination Type	6° +0° Coaxial cold light source illumination
Coaxial Illumination	≥30000lx
Reaching Radius of Arm	870mm
Adjustable Vertical Range	700mm~1100mm
Fine Focusing Range	30mm
Input Voltage	AC220V±22V / 50Hz±1Hz、 AC110V±11V /60Hz1Hz
Power	120VA
Fuse	T-type AC250V T1.25A、 AC125V T2.5A
Electrical Safety Standard	Executive Standard: GB9706.1-2007、type I
Packing Volume	0.2m ³ , 1carton
Total Gross Weight	41kg



Optional Accessories:

- 10X Eyepiece.
- Table installation parts(holding stand, split column).
- Video devices(1/2" or 1/4" CCD Camera,CCD Adapter, Beam Splitter and Connecting Cable).
- Straight Binocular,Universal Joint(for ENT).
- Magnifications and filed for optional objective lens:

Big Objective Lens	Total Magnifications	Diameter of Field(mm)
f250mm	4.2×、6.4×、9.6×	φ47.5、φ31、φ21
f300mm	3.5×、5.4×、8×	φ57、φ38、φ25
f350mm	3×、4.6×、6.8×	φ67、φ44、φ30
f400mm	3×、4×、6×	φ76、φ50、φ34

Main Specification

Microscope section	Model	SM-2000L
	Type	Olympus SZX7
	Eyepiece	Comfort View 10X Wide angle
	Inclination Angle	30°
	Pupillary Distance	50-76 mm
	Diopter Adjustment	±5°
	X-Y Speed	2.2mm/sec Foot control
	Magnification	Motorized Zoom 4X-20X
	Field of View	8mm-50mm
	Working Distance	≥180mm
Assistant mirror part	Focus Speed	±20mm Foot control
	Type	Stereo & Coaxial
Lighting system	Magnification	4X, 7X
	Type	Aspheric Design
	Light Source	15V / 150W Double Bulb; Imported halogen lamp
	Red Reflex	Aspheric Design; Bifocal multilayer reflection
	Control	Stepless Control
	Intensity	≥60.000 Lux
Base part	Power	~220V, 50Hz
	Length of Arm Extended	1200mm
	Elevation	±150mm
	Base size	560mm*560mm
Foot Switch	X-Y fine adjustment, electronically controlled zoom	



SM-2000L

Phaco Emulsifier MD-480A



Specification

Ultrasonic Emulsification (U/S)	Frequency	40kHz
	Functional mode	Continuance, Pulse, Linear and Burst
	Continuance	Emulsifying Power Range 0~100%
	Pulse	Frequency Range 1~99Hz
	Linear	Emulsifying power linearly controlled by the footswitch, varies between 0~100%
	Burst	Burst-Stopping Time 1.5~0s; Burst-Working Time 5~100ms
	Maximum Vacuum	500 mmHg
Irrigation / Aspiration (I/A)	Maximum Flux Rate	40 ml/min
	Flux Rate	0~40 ml/min
	Reflux Rate	20 ml/min
Vitrectomy (VIT)	Maximum Vacuum	500 mmHg
	Cutting Power Source	Air pump
	Cutting Frequency	20~600 cuts/min; or single-cut mode
	Maximum Flux Rate	40 ml/min
Cautery	Maximum Power	10 W \pm 20% (200 Ω)
	Type	Bipolar
	Power preset between	0~100%

Synoptophore YZ-23B

Features:

- With functions of diagnosis, treatment, simultaneous viewing, syncretic viewing, solid viewing, and afterimage.
- Equipped with a pair of Haidingers Brush and 20 pairs of pictures with different angle.
- Advanced semi-transparent and semi-reflecting viewfinder is convenient for the surgeon to observe.
- Advanced LED luminophor has even illumination, low heat and long service life.
- Pictures designed by new technology are anti-broken and has long service life.
- Manual or automatic coruscation with accurate frequency are at surgeon's option.
- Optional pictures for quantitative measuring of solid acutance (40 " ~1000")

Specifications

Magnification	1.65 \times
Diameter of Field	\geq 56mm
Red light	λ =640nm coruscation system
Left and right tubes rotate around erect axis	converging 50 $^{\circ}$, diverging 40 $^{\circ}$
Left and right tubes Rotatable angle around horizontal axis	\pm 30 $^{\circ}$
Pictures of left and right can be moved up and down according optical axis	\pm 10 Δ
Pictures of left and right rotate around optical axis	\pm 20 $^{\circ}$
Adjustable range of interpupillary distance	45~75mm
Darkroom illumination	LED bulb with symmetry design.
Adjustable Haidingers Brush	50-100round/ minute
Coruscation form	manual or automatic.
Automatic coruscation frequency	ten-step, 30-300times/minute.
Range of automatic coruscation(each cycle)	1/4 on 3/4 off, 1/2on 1/2 off, 3/4 on 1/4 off.
Power supply	AC110V/220V \pm 10%, 50Hz/60Hz
Power consumption	40VA
Type of automatic coruscation	The left and right can be turned on or off at the same time. The left and right can be turned on or off alternatively. One on and the other off. One on or off while the other can be turned on or off.





Technical parameters

Magnifier	Common mode rejection	$\geq 120\text{dB}$
	Input impedance	$\geq 100\text{M}\Omega$
	Input short circuit noise	$V_{p-p} \leq 2.0$
	Plus	1-20k, 8 grades of programmed control
	Frequency band	0.1-500Hz 8 grades of programmed control
Picture stimulator	Stimulating colour	red, yellow, blue, green, and white
	Mode of stimulation	chessboard grid, standing bar, matrix and banner
	Stimulating zone	A total of 12 modes including up/down, left/right, central, full field, up, down, left, right top, left top, left bottom, right bottom
	Space frequency	0.04, 0.09, 0.19, 0.38, 0.77, 1.55, 3.10
	Dual Comparison	40% 50% 60% 70% 80% 90% 100%
Flash stimulator	Stimulating light colour	Red, yellow, blue, green and white
	Flash frequency	0.2-30Hz
	EOG stimulating source	± 15 degree red light and audio prompt
	Flash strength	($\text{cd}^*\text{s}/\text{m}^2$) 6.325×10^{-4} 1.125×10^{-3} 2.000×10^{-3} 3.556×10^{-3} 6.325×10^{-3} 1.125×10^{-2} 2.000×10^{-2} 3.556×10^{-2} 6.325×10^{-2} 1.125×10^{-1} 2.000×10^{-1} 3.556×10^{-1} 6.325×10^{-1} 1.125 2.000
	Brightness of background light	(cd/m^2) 949, 1.687, 3.000, 5.335, 9.487, 16.870, 30.000

SHTOPVIEW

Shanghai Top View Industrial Co.,Ltd / 上海拓扑威实业有限公司

Address: Room 806, YongDing PLAZA, 3388# Gonghexin Rd, Zhabei District, Shanghai, China
zip: 200436

Tel : +86-21-61178155 Fax +86-21-61178156

Website: www.shtopview.com