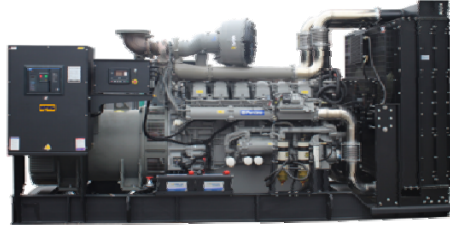


Model: MP450(S)-2

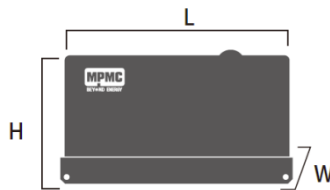
Powered by Perkins



Applicable Standards

- ISO 8528-5:2018
- GB/T2820.5-2009
- CE

| General Information | | Prime power | Standby power |
|-----------------------------------|-----------|---|---------------|
| Rated Power (kVA) | | 500 | 563 |
| Power Rating (kW) | | 400 | 450 |
| Frequency (Hz) | | 60 | |
| Engine Model | | 2506C-E15TAG1 L | |
| Engine Speed (RPM) | | 1800 | |
| Phase | | 3 | |
| PF | | 0.8 | |
| Control System | | Digital | |
| Rated voltage (V) | | 440/254 (According to customer requirements) | |
| Fuel tank capacity operating time | | ≥ 8h @ 75% load | |
| Fuel Consumption (L/h) | 110% load | 114 | |
| | 100% load | 100 | |
| | 75% load | 77 | |
| | 50% load | 55 | |



Dimension and Weight

| Model | MP450-1 Open type | MP450S-1 Silent type |
|------------------------------|----------------------|-------------------------|
| Length (L) mm | 3850 | 4600 |
| Width (W) mm | 1150 | 1422 |
| Height (H) mm | 2130 | 2530 |
| Dry weight (kg) | 3650 | 5000 |
| Tank capacity (L) | 1000 | 970 |
| The loading capacity (40'HC) | 6 units | 2 units |

Note: Specifications and illustrations are subject to revision without notice.

Environmental Conditions

- Ambient temperature: +5°C~+40°C
 - Altitude: ≤1000m
- Remark: If your conditions are different from the above, please contact our sales.

Factory Inspection

- Complete design and quality inspection
- 0%, 25%, 50%, 75%, 100%, 110% load test.
- Function test.
- Protection test

Painting Process

- MPMC has the most advanced automatic spraying / powder coating production line, and is equipped with various sandblasting equipment to ensure higher quality.
- Canopy painting: Henkel pretreatment process and world famous brand AkzoNobel powder.
- Base Frame painting: Sandblasting process and AkzoNobel powder (Hempel paint is optional).



Engine Specifications

| Engine model & manufacturer | | 2506C-E15TAG1 L (Perkins) |
|--|-----------|---|
| Emission Certification | | ----- |
| Number of cylinders | | 6 |
| Cylinder arrangement | | In-line |
| Cycle | | Four stroke |
| Aspiration | | Turbocharged |
| Bore x Stroke | | 137 x 171 mm |
| Displacement | | 15 L |
| Compression ratio | | 16 : 1 |
| Prime power /speed | | 458 kW/1800 rpm |
| Standby power /speed | | 514 kW/1800 rpm |
| Speed governor | | Electronic |
| Cooling system | | Forced Water Cooling Cycle |
| Frequency droop | | ≤ 3% |
| Total lubrication system capacity | | 62 L |
| Total Coolant capacity | | 58 L |
| Fuel consumption | 100% load | 199 g/kWh @1800 rpm |
| Starter motor | | DC 24V |
| Charge alternator | | DC 24V |
| <ul style="list-style-type: none"> ● Heavy duty diesel engine ● Anti-vibration mount ● Replaceable fuel filter, oil filter & air filter ● Cooling radiator and fan | | <ul style="list-style-type: none"> ● Starter battery (with lead acid) including rack and cables ● Flexible fuel connection hoses ● Exhaust silencer and bellows ● Operation manuals and circuit diagram documents |

Alternator Specifications

| Alternator | |
|------------------------|----------------|
| Number of phase | 3 |
| Power factor (Cos Phi) | 0.8 |
| Poles | 4 |
| Insulation type | H class |
| Winding Pitch | 2/3 |
| IP rating | IP23 |
| Bearing | Single bearing |
| Voltage regulator | A.V.R |
| Coupling | Flexible disc |

Control Panel

DSE 4520 MKII

Auto start and auto mains failure control module
(Alternator frequency & can speed sensing)



Key benefits

- Ultimate size to feature ratio.
- Automatically transfers between mains (utility) and generator.
- Hours counter provides accurate information for monitoring and maintenance periods.
- User-friendly set-up and button layout for ease of use.
- Multiple parameters are monitored simultaneously which are clearly displayed on the largest back-lit icon display in its class.
- The module can be configured to suit a wide range of applications.
- Compatible with a wide range of CAN engines including Tier 4.
- IP65 rating (with optional gasket) offers increased resistance to water ingress.

Key features

- Auto Start and AMF mode in one module.
- J1939-75 support and CAN alarm ignore function.
- Alternator frequency & CAN speed sensing in one variant.
- Largest back-lit icon display in its class.
- Heated display option.
- Real time clock provides accurate event logging.
- Fully configurable via the fascia or PC using USB communication.
- Extremely efficient power save mode.
- 3 phase generator sensing.
- 3 phase mains (utility) sensing
- Compatible with 600 V ph to ph nominal systems.
- Generator/load power monitoring (kW, kVA, kVar, PF).
- Accumulated power monitoring (kWh, kVAh, kVarh).
- Generator overload protection.
- Generator/load current monitoring and protection.
- Fuel and start outputs (configurable when using CAN).
- 4 configurable DC outputs.
- 3 configurable analogue/digital inputs
- 4 configurable digital inputs.
- Configurable staged loading outputs.
- 3 engine maintenance alarms.
- Engine speed protection.
- Engine hours counter.
- Engine pre-heat.
- Engine run-time scheduler.
- Engine idle control for starting & stopping.
- Tier 4 engine instrumentation screens.
- Battery voltage monitoring.
- Start on low battery voltage.
- Configurable remote start input.
- 1 alternative configuration.
- Comprehensive warning, electrical trip or shutdown protection upon fault condition.
- LCD alarm indication.
- Event log (50)

Options

| Engine | Alternator | Fuel System | Generating Set |
|---|--|---|--|
| <input type="checkbox"/> Water Jacket Preheater <input type="checkbox"/> Oil Preheater <input type="checkbox"/> Oil manual pump | <input type="checkbox"/> PMG excitation <input type="checkbox"/> Space heater <input type="checkbox"/> Winding temperature measuring | <input type="checkbox"/> 12 / 24 hour base tank <input type="checkbox"/> Bunded fuel tank <input type="checkbox"/> External fuel tank <input type="checkbox"/> Automatic fuel feeding <input type="checkbox"/> Switch between external tank and base tank (three-way valve) | <input type="checkbox"/> Deepsea, ComAp, Smartgen etc. controller <input type="checkbox"/> Trailer <input type="checkbox"/> Tools with the machine |



MPMC USA



MPMC UK



MPMC UAE



MPMC PA



MPMC NL



MPMC SA



MPMC CN

MPMC POWERTECH CORP.

sales@mpmc-china.com | www.mpmc-china.com

Photographs are for illustrative purposes only and may not reflect final specification.

Follow us



<https://www.facebook.com/mpmcgroup>



<https://www.linkedin.com/company/mpmcpowertech/>



<https://www.youtube.com/user/MPMCGenerator>

All information in this document is substantially correct at time of printing and may be altered subsequently. Final weight and dimensions will depend on completed specification.